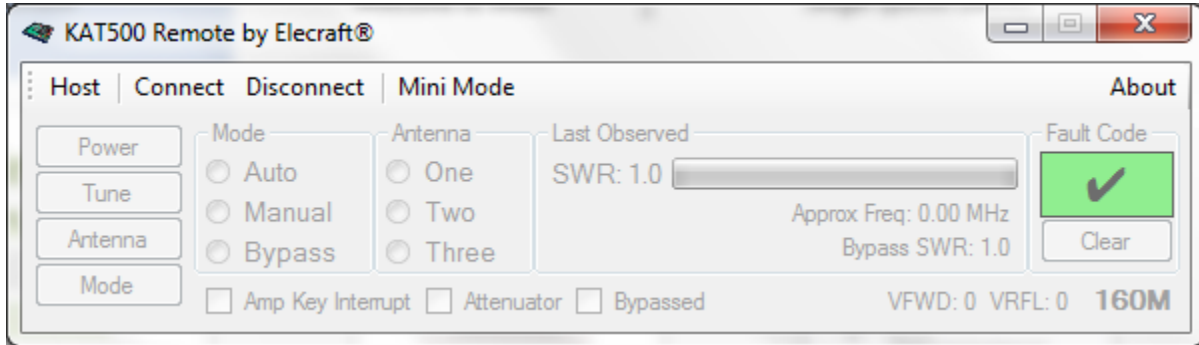


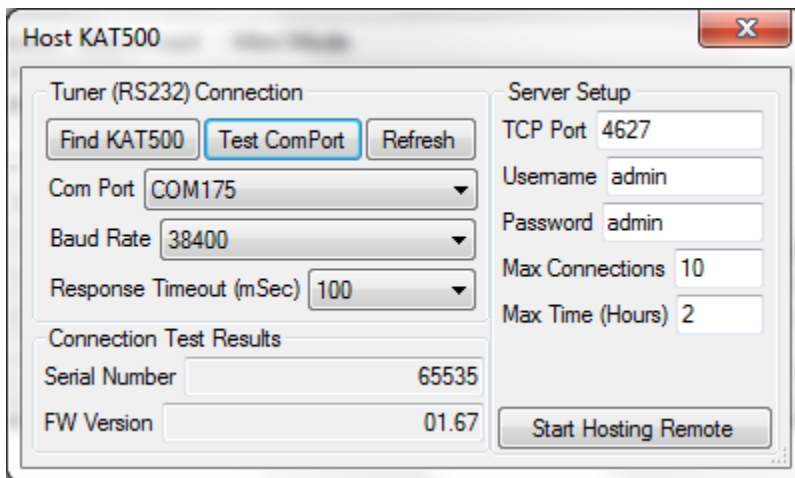
KAT500-Remote

Designed to operate your KAT500 over your network. The software contains both a server (Host) and a client (Connect). The idea, setup one instance of software on remote site PC in host mode. Run a second instance on another PC to act as the client for connecting to the remote site host.



Hosting your KAT500 over your Network

Click on the "Host" button to open the "Host" dialog.



This dialog allows you to configure the com port, baud rate required to communicate with your KAT500. It also allows you to setup the Server details for hosting your KAT500 over the network.

Use the Test Com Port button to help determine the com port your KAT500 is using. Upon successful test your serial number and FW Version will be shown.

The TCP Port is the port used for network communications.

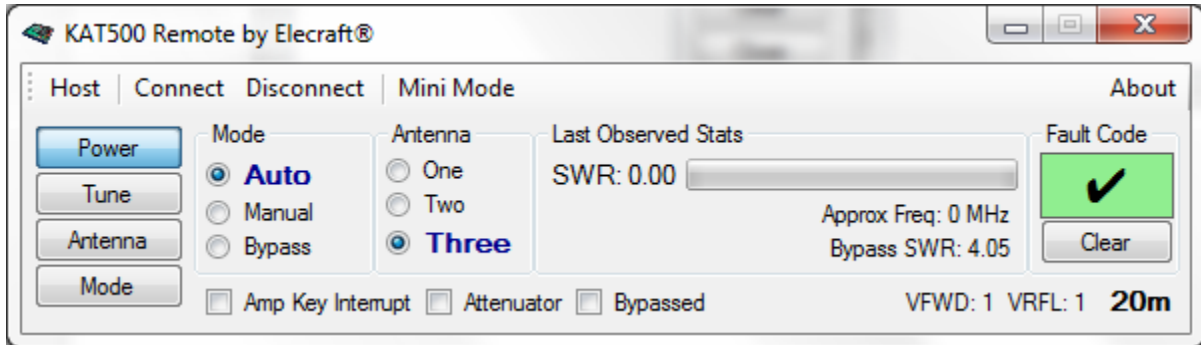
The Username and Password fields can be set to your preference.

The Password is used to limit "control" of the KAT500.

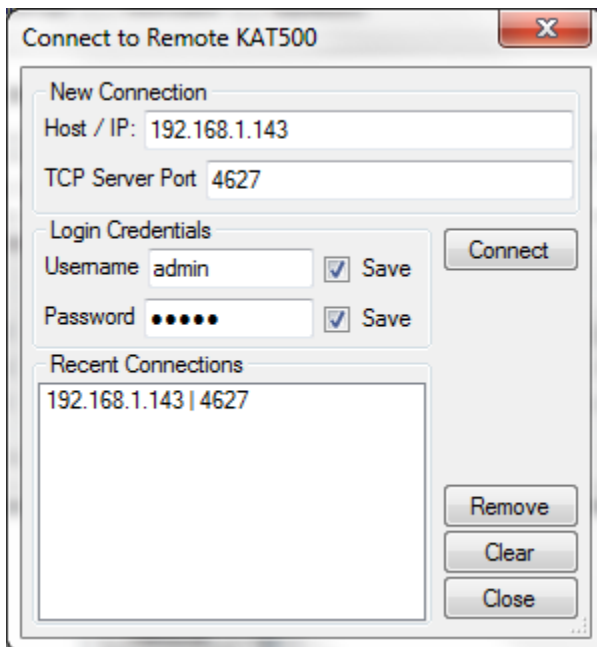
Max Connections will limit the amount of clients that can connect to your KAT500 for monitor and control purposes.

Max Time (Hours) will limit the amount of time a client may stay connected.

Click on Start Hosting Remote, to connect to the KAT500. Once connected, you should see a screen similar to the screenshot below.



Connecting to your KAT500 over your Network



Host/IP: The IP address of the host machine.
TCP Server Port: TCP Port setup on the host.

Enter the local IP of the host machine into the Host/IP field of the connect dialog. Make sure to also enter your password. This is required for control of the KAT500-Remote.

If you are running the KAT500-Remote program in host mode on the same PC, you can use the hostname "localhost" for testing purposes.

Upon successful connection, the software will start showing main control screen.

