


2011 End of Year Summary



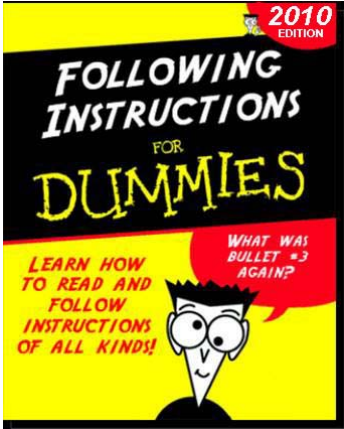
Santa Clara County ARES®/RACES
Last Updated 2011-Dec-8

ARES and Amateur Radio Emergency Service are registered servicemarks of the American Radio Relay League Incorporated and are used by permission.
© Copyright 2011 Santa Clara County ARES®/RACES. All rights reserved.

1

Housekeeping

- Pen/pencil & paper
- Cell phones & pagers
- Side conversations
- Questions
- Refreshments
- Breaks
- Restrooms
- In case of emergency



© Copyright 2011 Santa Clara County ARES®/RACES. All rights reserved.

2

Agenda

- Message passing
- MAC Program
- Packet operations
 - W6XSC Network Structure
 - Accessing the Network
 - Tactical Call Signs
 - Packet message addressing
- Radio Direction Finding
- Antenna Fundamentals and Safety
- AlertSCC
- Cross-Band Repeating
- SCC OES ARES/RACES Frequency List



© Copyright 2011 Santa Clara County ARES®/RACES. All rights reserved.

3

Message Passing

© Copyright 2011 Santa Clara County ARES®/RACES. All rights reserved.

4

Message Passing Do's & Don'ts

Based on observed behavior at a recent drill:

- Do not repeat the message
- Do not use Q-codes
- Do say numbers correctly: 11 is "one one"
- Do say time, date correctly: 10:51 is "one zero five one"
- Do minimize words; use proper prowords:
 - "the date is ..." → "date ..."
 - "Sorry, I didn't get that. Can you ..." → "say again word after"
- Do record message #s correctly
- Do send your message # when done receiving
- Do get acks from all stations in multi-station msg
- Do practice copying call signs (quickly)
- Do practice phonetics (standard ITU)

© Copyright 2011 Santa Clara County ARES®/RACES. All rights reserved.

5

2011 Message Passing Observations

- Message passing is what we do. It's why we exist.
- But message passing skills seem to have degraded
 - Incomplete / incorrect message forms
 - Degraded message passing protocol skills
 - Pace seems to be slowing down
- New message passing class in 2012
 - Will focus solely on message passing
 - Plenty of table top exercises to demonstrate proper skills

© Copyright 2011 Santa Clara County ARES®/RACES. All rights reserved.

6

Message Form – Message Numbers

- Critically important for tracking messages
- Message #
 - YOUR message number (often pre-stamped to ensure uniqueness)
- When Receiving Msg.: Sender’s Message #
 - If you are receiving a message, put the sender’s message number here
- When Sending Msg.: Receiver’s Message #
 - If you are sending a message, put the receiver’s message number here

MESSAGE FORM Use Ballpoint Pen—Press Hard; Print Clearly (See back for instructions)	When Receiving ² Msg.: Sender's msg. #	Msg. #	When Sending Msg. ³ Receiver's msg. #
	Situation: Location: Severity: Handling Order: Message Request: You To:		

© Copyright 2011 Santa Clara County ARES®/RACES. All rights reserved. 7

Recommended Transmission Process

- Sender (wait for ACK each step)
 - Message #, Date, Time
 - Severity, Handling, Requests
 - To, From
 - Subject
 - Reference (if any)
 - Message - 5 words at a time
 - “End of message”
- Receiver
 - ACK followed by receiver’s message #
 - “This is <call sign>”
 - Fill in Operator Info
- Sender
 - ACK / Fill in receiver’s message #
 - “This is <call sign>”
 - Fill in Operator Info

MESSAGE FORM Use Ballpoint Pen—Press Hard; Print Clearly (See back for instructions)			
When Receiving ² Msg.: Sender's msg. #	Msg. #	When Sending Msg. ³ Receiver's msg. #	
Date: (month/year)	Situation Severity: (1=most)	Msg. Handling Order: (1=most)	Message Request: You To: TAKE ACTION (1=most)
Time: (hour/minute)	<input type="checkbox"/> EMERGENCY (e.g. Life Threat)	<input type="checkbox"/> IMMEDIATE (As Soon as Possible)	<input type="checkbox"/> Yes <input type="checkbox"/> No
	<input type="checkbox"/> URGENT (e.g. Property Threat)	<input type="checkbox"/> PRIORITY (Less Than One Hour)	<input type="checkbox"/> REPLY (1=most) <input type="checkbox"/> No
	<input type="checkbox"/> OTHER (All others)	<input type="checkbox"/> ROUTINE (More Than One Hour)	<input type="checkbox"/> Yes, for FOR YOUR INFO. (no reply required)
ICS Position: (required) ⁸	ICS Position: (required) ⁸		
To: Location: (required) ⁹	From: Location: (required) ⁹		
Name: (optional)	Name: (optional)		
Telephone #: (optional)	Telephone #: (optional)		
SUBJECT: ¹⁰			
REFERENCE (e.g., Number of earlier msg.): ¹¹			
Message: ¹² (what, when, where needed; how long; contact name and phone number) KEEP MSG BRIEF			
ACTION TAKEN: ¹³ (for use by Originator / Receiver) USE SEPARATE MESSAGE FORM IF SENDING REPLY:			
CC: <input type="checkbox"/> Management <input type="checkbox"/> Operations <input type="checkbox"/> Planning <input type="checkbox"/> Logistics <input type="checkbox"/> Finance			
Operator Use Only: ¹⁴			
How Received: <input type="checkbox"/> or Sent: <input type="checkbox"/> (1=most)	Operator Call Sign:		
<input type="checkbox"/> Telephone <input type="checkbox"/> Dispatch Center	Operator Name:		
<input type="checkbox"/> EOC Radio <input type="checkbox"/> FAX <input type="checkbox"/> Courier	Date:	Time:	
<input type="checkbox"/> Amateur Radio <input type="checkbox"/> Other			
Outgoing/Reply: ¹⁵ Message Originator: Send the top copy (white) to radio, yellow to PLANNING, retain the pink copy for your reference. Radio: After sending, complete Disposition info., retain white copy for file in radio. Incoming/Reply: ¹⁶ Radio: After receiving, complete Disposition info., route the top copy (white) to the Addresser, yellow to PLANNING, retain pink for file in Radio. Addresser: Take appropriate action.			

© Copyright 2011 Santa Clara County ARES®/RACES. All rights reserved. 8

Sending to More Than One Station

- Announce quantity and priority of message
 - “All Stations, All Stations, Stand by to copy one routine message”
- Pick a pacing station
 - “Mountain View, will you be my pacing station?”
 - “Mountain View acknowledges”
- Send message as normal
 - Pacing station provides acknowledgements during message transfer and sends their message number at the end
- Ask for acknowledgements from other stations
 - “I will now poll all stations for acknowledgements. When I call you, respond with your message number or request a fill.”
 - “Los Altos”
 - Gives stations an opportunity to ask for “fills” or repeats
 - Confirms which stations received the message

© Copyright 2011 Santa Clara County ARES®/RACES. All rights reserved.

9

Message Passing Example

- Each participant should have a blank ICS 213 message forms.
- This exercise will consist of passing a message to “all stations”
- The acting NCO will ask for a pacing station, if none volunteer, one will be selected by the staff.
- After transmission, the acting NCO will ask for any station requiring fills. Participants should minimize verbiage by using message handling pro-words.

© Copyright 2011 Santa Clara County ARES®/RACES. All rights reserved.

10

Exercise time – are you ready????



© Copyright 2011 Santa Clara County ARES®/RACES. All rights reserved.

11

How'd You Do?

- Did you copy the message EXACTLY?
- Don't be afraid to ask for spelling of a word – get it right!
- Beware of heterographs
 - “to” vs. “too” vs. “two”
 - “for” vs. “four”
 - “ate” vs. “eight”
- Did you add?
 - Your message number
 - How received
 - Amateur Radio
 - Call sign
 - Name
 - Date
 - Time
- Did the sending station ask for the receiver's message number?

© Copyright 2011 Santa Clara County ARES®/RACES. All rights reserved.

12

MESSAGE FORM		When Receiving Msg.: Sender's msg. #	Msg. #	When Sending Msg. Receiver's msg. #
Use Ballpoint Pen—Press Hard; Print Clearly (See back for instructions)			SLH 235	
Date: (MM/DD/YY) 01 / 06 / 10	Situation Severity (✓one) <input type="checkbox"/> EMERGENCY (e.g., Life Threat) <input checked="" type="checkbox"/> URGENT (e.g., Property Threat) <input type="checkbox"/> OTHER (All others)	Msg. Handling Order (✓one) <input type="checkbox"/> IMMEDIATE (As Soon as Possible) <input checked="" type="checkbox"/> PRIORITY (Less Than One Hour) <input type="checkbox"/> ROUTINE (More Than One Hour)	Message Requests You To: TAKE ACTION (✓one) <input checked="" type="checkbox"/> Yes <input type="checkbox"/> No REPLY (✓one) <input checked="" type="checkbox"/> Yes, by 0047 hrs <input type="checkbox"/> No <input type="checkbox"/> FOR YOUR INFO. (no action required)	
Time: (24 hour clock) 2347 <small>0001 to 2400 2:00 PM to (12:59) AM (MST)</small>	ICS Position: (required) Planning	From:	ICS Position: (required) Operations	
To:	Location: (required) DEOC	From:	Location: (required) Saint Louise Hospital	
	Name: (optional)		Name: (optional)	
	Telephone #: (optional)		Telephone #: (optional)	
SUBJECT: ¹⁰ Availability of Medication				
REFERENCE (e.g., Number of earlier msg.): ¹¹				
Message: ¹² (what, when, where needed; how long; contact name and phone number) KEEP MSG BRIEF				
Need	50	doses	of	lamivudine
to	treat	two	cases	of
acute	hepatitis	B.	Advise	availability
and	delivery.			

13

Did you remember to complete?????

Operator Use Only: ¹⁴	
How Received <input type="checkbox"/> or Sent <input checked="" type="checkbox"/> (✓one)	Operator Call Sign: (your call sign)
<input type="checkbox"/> Telephone <input type="checkbox"/> Dispatch Center	Operator Name: (your name)
<input type="checkbox"/> EOC Radio <input type="checkbox"/> FAX <input type="checkbox"/> Courier	
<input checked="" type="checkbox"/> Amateur Radio <input type="checkbox"/> Other _____	Date: (today's date) Time: (send time)

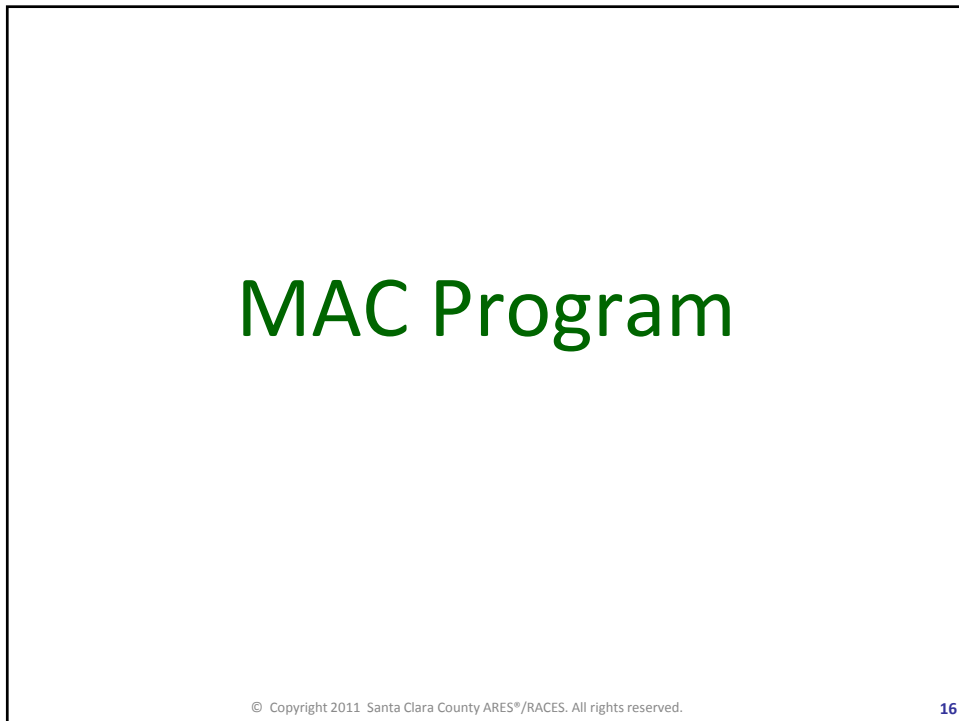
Outgoing (Sent): ¹⁵

Message Originator: Send the top copy (white) to radio, yellow to PLANNING, retain the pink copy for your reference.
Radio: After sending, complete Disposition info., retain white copy for file in Radio.

Incoming (Received): ¹⁵

Radio: After receiving, complete Disposition info., route the top copy (white) to the Addressee, yellow to PLANNING, retain pink for file in Radio.
Addressee: Take appropriate action.

SCCo ICS Form 213
6/28/2007



MAC Program 2011

- No major changes in 2011
- We have now reached the 2 year mark
- Going forward, that means:
 - All active status MACs must continue to meet the minimum participation requirements – 2 events in 2 years
 - Everyone can check their own records online
- Upcoming changes:
 - “Level” 1, 2, 3 will become “Type” 3, 2, 1
 - Reverse order, with Type 1 being the highest
 - Aligns with ICS typing standards
 - HF
 - Looking for volunteers to help scope out HF requirements
 - Add Message Passing Class to F1 requirements

© Copyright 2011 Santa Clara County ARES®/RACES. All rights reserved.

17

Questions / Concerns About an Eval

- Consult the MAC Handbook
 - Most concerns tend to be caused by a candidate not understanding the program requirements
 - The MAC Handbook is the official guide for all things MAC
- Speak with your evaluator
 - Evaluators are also trained on program details
 - Confirm eval status before you leave the eval
- Document your progress
 - Forms are available on the website for tracking progress
 - Print it out, bring it with you, have evaluator sign it
- Disagreement, discrepancy or problem?
 - Don't delay - speak directly with your evaluator
 - If that doesn't work, escalate to Eval Coordinator for the event
 - If that doesn't work, escalate to MAC Program Manager

© Copyright 2011 Santa Clara County ARES®/RACES. All rights reserved.

18

County-wide Communications Drills

- The drills formerly called “MAC Drills”
 - MACs and non-MACs now welcome
- Latest drill was a huge success
 - 70+ attended, very high feedback marks
 - Activities: direction finding (2 types), cross-band repeating, HF, message passing, net control, packet “intro” station, full packet scenario station
 - Opportunities to participate or lead planning/operations
- Future drills will be patterned after this one
- Probably one per year
- We would like even more people to show up
 - Our plan could have easily accommodated another 20-30

© Copyright 2011 Santa Clara County ARES®/RACES. All rights reserved.

19



Packet Operations End of Year Update - 2011



Santa Clara County ARES®/RACES

Last Updated 2011-Dec-8

ARES and Amateur Radio Emergency Service are registered servicemarks of the American Radio Relay League Incorporated and are used by permission.

© Copyright 2011 Santa Clara County ARES®/RACES. All rights reserved.

20

Why Packet Radio?

- It's fast
 - Yes, that's right. Fast.
 - 80+ messages sent/received, logged, acknowledged, printed in triplicate, perfectly legible, in < 2 hrs, with 0 errors, by 1 person!
- It's easy
 - Hardware: pre-built cables; straight-forward connections
 - Software: if you can use e-mail, you can use Outpost
 - Procedures: extensive documentation on website
- It's deployable
 - Virtually anywhere in the county and most of surrounding counties; no specialized radios or antennas required
- It fits our served agencies' needs
 - Preferable for long, complex, and/or high volume messages; explicit acknowledgements and tracking

© Copyright 2011 Santa Clara County ARES®/RACES. All rights reserved.

21

Learning Objectives

Our goal today is not to teach packet, but to highlight recent changes and reinforce certain key points.

By the end of the class, you will be able to:

- Describe the SCCo packet network structure
- Understand the use of primary & secondary BBSs
- Understand the use of tactical calls
- Properly address messages to users in the SCCo packet network
- Properly address messages to users outside the SCCo packet network

© Copyright 2011 Santa Clara County ARES®/RACES. All rights reserved.

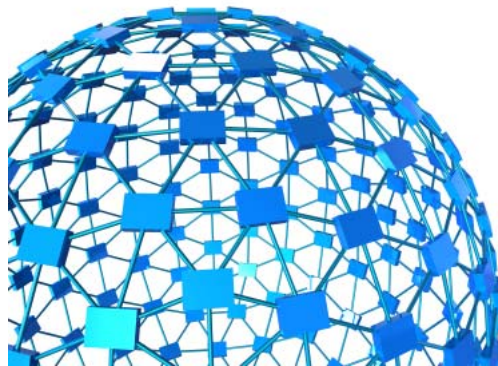
22

Agenda

- Network Structure
- Primary and Secondary BBSs
- Tactical Call Signs
- Packet Message Addressing
- New Gateway Features

© Copyright 2011 Santa Clara County ARES®/RACES. All rights reserved.

23

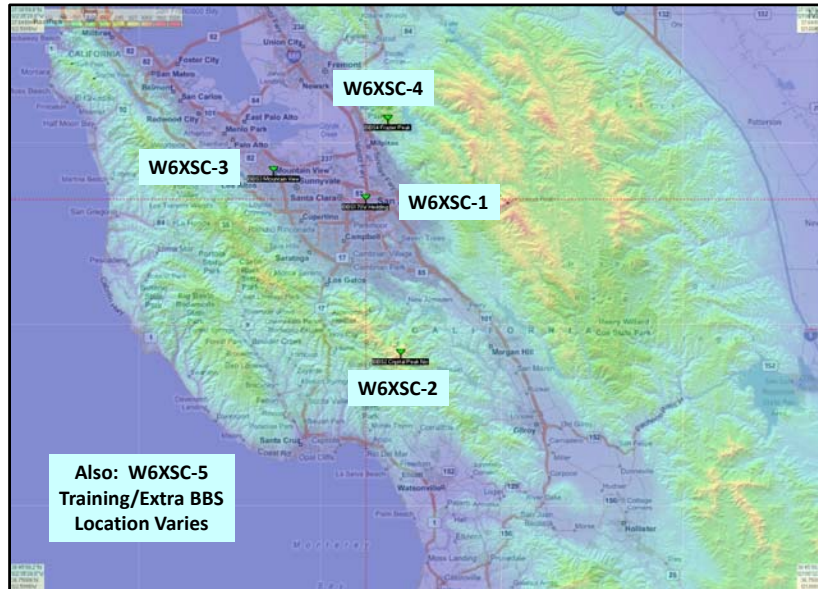


W6XSC NETWORK STRUCTURE

© Copyright 2011 Santa Clara County ARES®/RACES. All rights reserved.

24

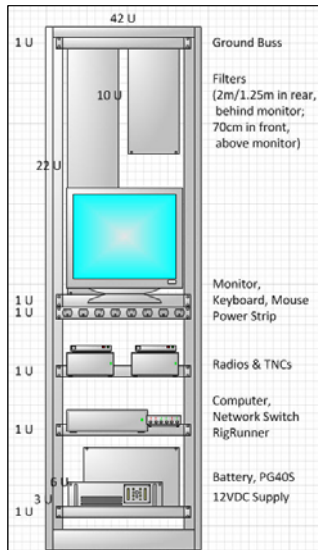
W6XSC BBS Locations



© Copyright 2011 Santa Clara County ARES®/RACES. All rights reserved.

25

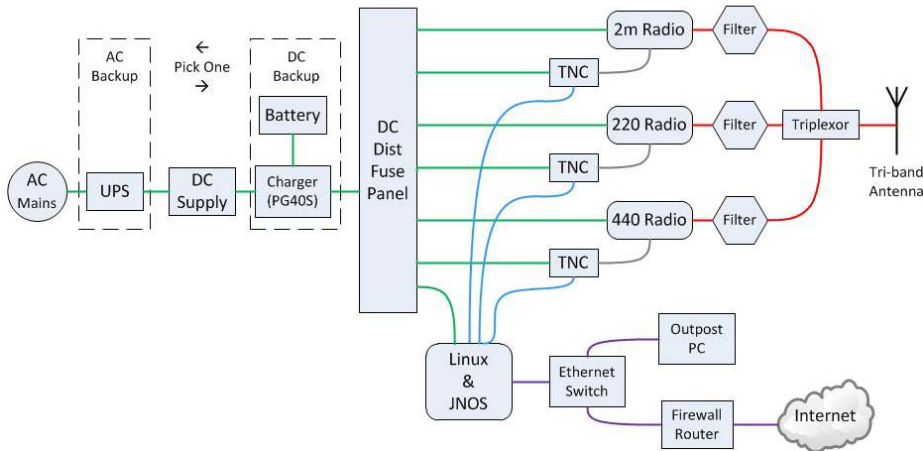
BBS Physical Installation



© Copyright 2011 Santa Clara County ARES®/RACES. All rights reserved.

26

Block Diagram: Typical W6XSC BBS



27

W6XSC Connectivity/Frequencies

- 144 MHz - access
 - User access; typically individuals, some EOCs
- 220 MHz - access
 - User access; typically EOCs, some individuals
 - Future: add forwarding to traditional BBS network
- 440 MHz - forwarding
 - Forwarding between BBSs, no user access
 - Each BBS can reach all other BBSs directly
- 5.8 GHz (unlicensed)
 - Remote access for management/maintenance
 - Future: use for forwarding between BBSs
- Internet
 - Internet gateway functions currently located at Crystal Peak

© Copyright 2011 Santa Clara County ARES®/RACES. All rights reserved.

28

W6XSC BBS Operational Concepts

- The network is run like a commercial network
 - ARES/RACES – missing the point unless it works in an emergency
 - UPS, backup generators, physical and network security
 - Testing, automated monitoring, user communications
- All BBSs have equivalent functionality, user interface
 - Simplifies user training
 - Provides backup in case of failure
- All cities/agencies can reach at least 2 BBSs
 - Designated primary & secondary
 - Everyone in other cities knows where to find you
- All users in a city/agency use the same BBS
 - Simplifies addressing
 - Everyone in other cities knows where to find you

© Copyright 2011 Santa Clara County ARES®/RACES. All rights reserved.

29

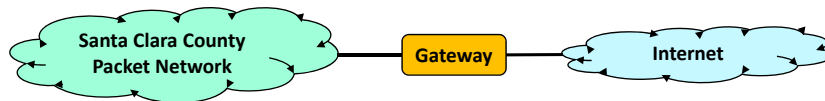
Connectivity Beyond County Borders

- Bay Area / ARRL Silicon Valley Section
 - All surrounding counties and Coastal Region EOC can reach at least one Santa Clara County BBS – no Internet required!
 - CalEMA Coastal Region, Alameda County, Contra Costa County, Marin County, Monterey County, San Benito County, San Francisco County, San Mateo County, Santa Cruz County
 - Tactical calls already installed in all SCCo BBSs
 - Anticipated use: mutual aid; connectivity to CalEMA Coastal Region for escalation
 - Next Step: establish regular “check-in” process with surrounding counties.

30

Connectivity Beyond County Borders

- Wide Area
 - AMPRnet gateway
 - Connectivity between amateur packet stations around the world
 - Uses 44/8 IP addresses, IP/IP tunnels
 - Working now
 - E-Mail gateway
 - Connectivity between packet and e-mail
 - Outbound is working now
 - Inbound coming soon; some restrictions due to Part 97
 - Traditional BBS network connection via RF – early 2012



© Copyright 2011 Santa Clara County ARES®/RACES. All rights reserved.

31

Summary of Changes in 2011

- Jan, 2011
 - BBS names changes to W6XSC-# format
 - Moved 6 agencies from W6XSC-1 to W6XSC-2
 - New PKTMON and PKTTUE tactical calls for weekly check-in
- Mar, 2011
 - 2m access frequency change at W6XSC-1
 - New W6XSC-4 BBS at Frazier Peak
- May, 2011
 - SCCo Packet Installer v31
 - Launch PacFORMS from Outpost; auto message #s in PacFORMS
 - Duplicate bulletin suppression
 - Improved channel efficiency (skip “LM” if no new messages)
 - Locked “From” field
 - New “Draft” designation (if “Save” in Out Tray, instead of “Send”)
 - Prefill PacFORMS with message number, operator info
 - Improved channel efficiency (don’t send blank fields)
 - Automatic default browser detection

© Copyright 2011 Santa Clara County ARES®/RACES. All rights reserved.

32

Summary of Changes in 2011

- Nov, 2011
 - AMPRnet gateway
 - E-mail gateway (outbound)
- All changes announced to scc-packet Yahoo group
- All changes documented on packet page of county website
 - www.scc-ares-races.org/packet.html

Santa Clara County OES, California
ARES/RACES

[Home](#) [Operations](#) [Packet](#) [Training and Events](#) [Reference Info.](#) [FAQ](#) November 28, 2011

PACKET RADIO INFORMATION

SANTA CLARA COUNTY PACKET NETWORK UPDATE NOTICES

- [2011-11-28 - New Gateways \(PDF - 100 KB\)](#)
- [2011-05-10 - New Features in SCCo Packet Installer v31 \(PDF - 105 KB\)](#)
- [2011-03-09 - 2m Frequency Change at W6XSC-1 \(PDF - 91KB\)](#)
- [2011-01-26 - Changes Completed \(PDF - 120 KB\)](#)
- [2011-01-17 - New Features Coming \(PDF - 136 KB\)](#)
- [2010-06-14 - New Features Available \(PDF - 104 KB\)](#)

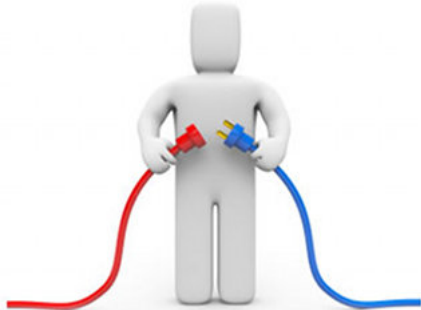
© Copyright 2011 Santa Clara County ARES®/RACES. All rights reserved.

33



© Copyright 2011 Santa Clara County ARES®/RACES. All rights reserved.

34



How do I connect?

ACCESSING THE NETWORK

© Copyright 2011 Santa Clara County ARES®/RACES. All rights reserved. 35

Antenna / Power Considerations

- Packet networks are simplex
- You must be able to hear EVERYONE else on the channel and they must ALL be able to hear you
 - If not, you WILL cause doubles
 - Even if the BBS can hear your HT set on 1 watt with a rubber duck antenna in the basement, the person two cities away from you can not!
 - Even if it works when the channel is quiet, you WILL cause doubles during a real incident (or a drill or public service event) when everyone is trying to connect
- Raise your antenna as high as possible
- Use plenty of power

© Copyright 2011 Santa Clara County ARES®/RACES. All rights reserved. 36

W6XSC BBS Access Frequencies

- www.scc-ares-races.org
 - Packet > Packet Frequencies and BBS Listings

Call Sign	Host.Domain	2m Access	1.25m Access	Location	Comments
W6XSC-1	w6xsc-1.ampr.org	144.990	223.620	Santa Clara Co Office Bldg (San Jose)	JNOS; 24/7; UPS
W6XSC-2	w6xsc-2.ampr.org	145.730	-none-	Crystal Peak (South County)	JNOS; 24/7; UPS
W6XSC-3	w6xsc-3.ampr.org	144.310	223.540	Mountain View	JNOS; 24/7; UPS
W6XSC-4	w6xsc-4.ampr.org	145.690	223.560	Frazier Peak (above Milpitas)	JNOS; 24/7; UPS
W6XSC-5	w6xsc-5.ampr.org	varies	varies	Extra - for training, back-up, etc.	JNOS

<http://www.scc-ares-races.org/freqs/packet-freqs.html>

- Recommendations
 - EOCs use 220 access (less crowded, eases EOC antenna limitations)
 - Individuals use 2m access (more radio/antenna options)
 - Always connect to your primary BBS, if available; else, use secondary

© Copyright 2011 Santa Clara County ARES®/RACES. All rights reserved.

37

Primary & Secondary BBSs

- Each city/agency has a primary and secondary BBS
 - Selection based on RF coverage, load
- All individuals use the same BBS as their city/agency
- Use primary if possible; otherwise, use secondary
- Why?
 - Simplifies sending a message to someone
 - Best RF coverage for most locations in the city/agency footprint
 - No need to forward intra-agency messages between BBSs
 - Distributes load across all BBSs
- If primary fails, cities/agencies on that BBS are distributed across remaining three BBSs
 - Keeps load distributed, even during a failure

© Copyright 2011 Santa Clara County ARES®/RACES. All rights reserved.

38

Primary & Secondary BBSs

- Primary and Secondary BBSs are listed on the website

#	Agency	Prefix	Primary BBS (2.1)	Secondary BBS (2.2)
Santa Clara County Cities and Agencies				
1	CalFire VIPs - Santa Clara Unit	SCU	W6XSC-2	W6XSC-1
2	Campbell, City of	CBL	W6XSC-1	W6XSC-3
3	County Communications Center	CCC	W6XSC-1	W6XSC-3
4	Cupertino, City of	CUP	W6XSC-1	W6XSC-3
5	Gilroy, City of	GIL	W6XSC-2	W6XSC-1
6	Hospitals (all SCCo) & DEOC	HOS	W6XSC-2	W6XSC-1
7	Loma Prieta Region	LMP	W6XSC-1	W6XSC-3
8	Los Altos, City of	LOS	W6XSC-3	W6XSC-1

<http://www.scc-ares-races.org/freqs/packet-freqs.html>

© Copyright 2011 Santa Clara County ARES®/RACES. All rights reserved.

39

Primary & Secondary BBSs

- In an emergency, web site may not be available
- The same information is also posted in a bulletin on all BBSs
 - Currently located in the “perm” area.
 - Bulletin area name will probably change in the next few months
- Keep a copy in your Outpost “Archive” folder at all times
 - You may also want to save it as a text file on your PC
- Post it at your EOC or operating position

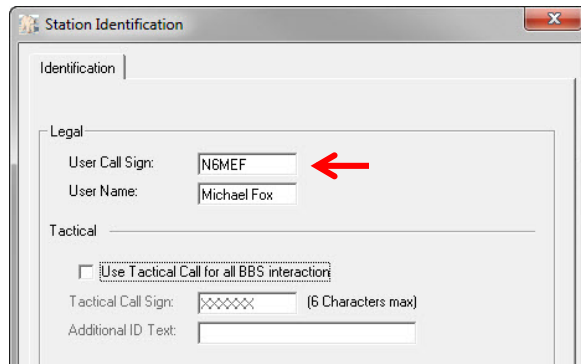
Agency Name	Pfx	Pri	Sec
-----	---	---	-----
Cal-Fire VIPs Santa Clara Unit	SCU	W6XSC-2	W6XSC-1
Campbell, City of	CBL	W6XSC-1	W6XSC-3
County Comm Center	CCC	W6XSC-1	W6XSC-3
Cupertino, City of	CUP	W6XSC-1	W6XSC-3
Gilroy, City of	GIL	W6XSC-2	W6XSC-1
Santa Clara Co Hospitals	HOS	W6XSC-2	W6XSC-1
Loma Prieta Region	LMP	W6XSC-1	W6XSC-3
Los Altos, City of	LOS	W6XSC-3	W6XSC-1

© Copyright 2011 Santa Clara County ARES®/RACES. All rights reserved.

40

Outpost: Setup > Identification

- Individuals use their FCC call sign
 - Outpost sets TNC automatically when you set your call sign in the Station Identification screen
 - Alternatively: Set your TNC “mycall” with your FCC call sign; then “connect w6xsc-#” (where # = 1-5); TNC sends your call sign

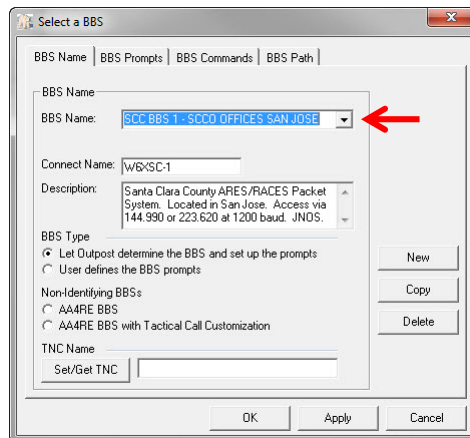


© Copyright 2011 Santa Clara County ARES®/RACES. All rights reserved.

41

Outpost: Setup > BBS

- Select your primary BBS
 - Outpost SCC is preconfigured with all five W6XSC BBSs



© Copyright 2011 Santa Clara County ARES®/RACES. All rights reserved.

42



TACTICAL CALL SIGNS

© Copyright 2011 Santa Clara County ARES®/RACES. All rights reserved.

43

Review: FCC vs. Tactical Call Signs

- FCC Call Sign
 - Assigned by FCC
 - Used to identify an amateur operator or its station
 - Part 97: “each amateur station ... must transmit its assigned call sign ... at the end of each communication, and at least every ten minutes during a communication.”
- Tactical Call Sign
 - Assigned by net control or other local authority
 - Used to identify a function or a location
 - “Staging”, “EOC”, “Fire Station 1”
 - Use to call another function/location or answer a call
- Using both for packet – just like for voice
 - Connect using tactical calls, send messages to tactical calls
 - Final ID with FCC call sign

© Copyright 2011 Santa Clara County ARES®/RACES. All rights reserved.

44

What Are Tactical Call Signs?

- Call sign used to identify a function or location, instead of the individual assigned there
- Examples:
 - Santa Clara County EOC
 - Good Samaritan Hospital
 - Mountain View Varsity Park CERT
 - Packet Check-in Net Control for Monday or Tuesday
- Each is assigned a 6 letter abbreviation
- Does not replace FCC call sign
 - You must still configure your FCC call sign
 - Outpost automatically IDs with FCC call sign at the end of a connection if a tactical call sign is used

© Copyright 2011 Santa Clara County ARES®/RACES. All rights reserved.

45

Tactical Call Usage

- When should I connect using a tactical call?
 - Real incidents; drills, public service events, too
 - Only when you are operating as that function/location
 - Examples:
 - When you are the packet operator for your city EOC
 - When you are the packet operator for your CERT group
 - When you are the packet operator for a shelter
 - When you are the packet check-in net control operator
 - Otherwise, just connect using your FCC call sign
- Which tactical call should I use?
 - It depends on your organization and assignment
 - Usually assigned by your city/agency EC, or county DEC

© Copyright 2011 Santa Clara County ARES®/RACES. All rights reserved.

46

Tactical Call Usage

- How do I know which tactical calls to send TO?
 - City/agency main tactical calls are posted as a bulletin to all BBSs
 - They're easy enough to get for legitimate users, but we don't post them publicly
 - Your city/agency has a list of their own additional tactical calls
 - All tactical calls for a given agency start with the same prefix
 - All tactical calls with the same prefix have the same primary BBS

#Tactical	Agency Name	Pfx	Pri	Sec
#-----	-----	---	-----	-----
XXXXXX	Cal-Fire VIPs Santa Clara Unit	SCU	W6XSC-2	W6XSC-1
X	Campbell, City of	CBL	W6XSC-1	W6XSC-3
X	County Comm Center	CCC	W6XSC-1	W6XSC-3
X	Cupertino, City of	CUP	W6XSC-1	W6XSC-3
X	Gilroy, City of	GIL	W6XSC-2	W6XSC-1
X	Santa Clara Co Hospitals	HOS	W6XSC-2	W6XSC-1
X	Loma Prieta Region	LMP	W6XSC-1	W6XSC-3
XXXXXX	Los Altos, City of	LOS	W6XSC-3	W6XSC-1

Please do NOT send "test" messages to tactical calls. They do not need to be tested.

Tactical Call Example

- In the examples that follow, we will use the mythical city of "Xanadu"
- Xanadu's main tactical call entry would look like:

#Tactical	Agency Name	Pfx	Pri	Sec
#-----	-----	---	-----	-----
XNDEOC	Xanadu, City of	XND	W6XSC-4	W6XSC-2

- Xanadu has other tactical calls which all start with the "XND" prefix:
 - Example: XNDFS1 = Xanadu Fire Station 1

Your EC can request a list of tactical calls for your city/agency. Follow the procedure on www.scco-ares-races.org/packet.html.

Outpost: Setup > ID (Tactical Call)

- Cities/Agencies/Locations/Functions use tactical call sign
 - Configure your FCC call sign as usual
 - Also check “Use Tactical Call ...” and enter your tactical call
 - Outpost logs in with your tactical call, then automatically IDs with your FCC call sign at the end of your session.

© Copyright 2011 Santa Clara County ARES®/RACES. All rights reserved.

49



“You want it to go where?”

PACKET MESSAGE ADDRESSING

© Copyright 2011 Santa Clara County ARES®/RACES. All rights reserved.

50

Review: E-mail

- You want to contact Joe Ham who lives in Mountain View.
 - Without knowing his e-mail address, can you guess what it is? (nope)
 - How about just the left hand side of the address (...@)? (nope)
 - How about just the right hand side of the address (@...)? (nope)
- So you ask Joe for his e-mail address. He tells you:
 - jham3270@gmail.com
 - dxbandit2000@yahoo.com
 - joseph@joehamtheman.org
 - ab6cde@arri.net
 - Joe.Ham@eng1.compuco.com
- Which one should you use?
 - It usually depends. Often, it's not clear. Not great for EmComm.
- How can you keep track of all of this?
 - Manually, with address book in your e-mail application

© Copyright 2011 Santa Clara County ARES®/RACES. All rights reserved.

51

SCCo Packet Network Addresses

- Similar to e-mail addresses, except:
- The left-hand-side of the address (...@) is known
 - For an individual, it's the person's call sign
 - For agencies & locations it's the tactical call sign
- The right-hand-side of the address (@...) is known
 - It's w6xsc-#.ampr.org (where # is 1-5)
 - And you can figure out the “#” based on the primary and secondary BBS assigned to the city/agency's prefix

#Tactical	Agency Name	Pfx	Pri	Sec
#-----	-----			-----
XNDEOC	Xanadu, City of	XND	W6XSC-4	W6XSC-2

© Copyright 2011 Santa Clara County ARES®/RACES. All rights reserved.

52

Review: E-mail

- Standard e-mail address format
 - Generically
 - <left-hand-side>@<right-hand-side>
 - Typically seen on the Internet
 - “user@host.domain”
 - Example: joe.ham@eng1.compuco.com
 - “user@domain”
 - Example: joe3270@yahoo.com
 - Requires company-wide (domain-wide) address database which routes e-mails to the right server for each user.

© Copyright 2011 Santa Clara County ARES®/RACES. All rights reserved.

53

SCCo Packet Network Addressing

- Standard packet message address format:
 - “user@host.domain”
 - “host” is the BBS name (W6XSC-#)
 - “domain” is ampr.org
 - n6mef@w6xsc-1.ampr.org (Michael Fox in Santa Clara)
 - k6fsh@w6xsc-3.ampr.org (Bob “Fish” Fishman in Mountain View)
 - kz6o@w6xsc-2.ampr.org (Logan Zintsmaster in Morgan Hill)
 - xndeoc@w6xsc-4.ampr.org (Xanadu Emergency Operations Ctr)
 - xndfs1@w6xsc-4.ampr.org (Xanadu Fire Station 1)
- This format works no matter where you are
 - Same BBS
 - Different W6XSC BBS
 - Different BBS on AMPRnet somewhere else in the world

© Copyright 2011 Santa Clara County ARES®/RACES. All rights reserved.

54

Review: E-mail Address Shortcuts

- You can usually leave off the **domain** when you are sending e-mail within an organization
 - “user@host”
 - Example: joe.ham@eng1
- Sometimes, you can just send to “user”
 - Usually on the same host, sometimes in the same domain
 - “user”
 - Example: joe.ham

© Copyright 2011 Santa Clara County ARES®/RACES. All rights reserved.

55

SCCo Packet Network Addressing

- You can leave off the domain (“.ampr.org”):
 - “user@host”
 - “host” is the BBS name (W6XSC-#)
 - n6mef@w6xsc-1 (Michael Fox in Santa Clara)
 - k6fsh@w6xsc-3 (Bob “Fish” Fishman in Mountain View)
 - kz6o@w6xsc-2 (Logan Zintsmaster in Morgan Hill)
 - xndeoc@w6xsc-4 (Xanadu EOC)
 - xndfs1@w6xsc-4 (Xanadu Fire Station 1)
- This works within the W6XSC network
- This should work in worldwide AMPRnet network
 - It *should*, but it depends on if the BBS is set up properly

© Copyright 2011 Santa Clara County ARES®/RACES. All rights reserved.

56

SCCo Packet Network Addressing

- Special case:
 - “user” (with no @...)
- If “user” is an FCC call sign, message stays on local BBS (we don’t know where else it should go):
 - n6mef → stays on whatever BBS you are connected to
 - k6fsh → stays on whatever BBS you are connected to
 - kz6o → stays on whatever BBS you are connected to

© Copyright 2011 Santa Clara County ARES®/RACES. All rights reserved.

57

SCCo Packet Network Addressing

- Special case:
 - “user” (with no @...)
- If “user” is a tactical call, message is forwarded to the primary BBS for that agency’s prefix:

#Tactical	Agency Name	Pfx	Pri	Sec
#-----	-----			
XNDEOC	Xanadu, City of	XND	W6XSC-4	W6XSC-2

- xndeoc → forwarded to: xndeoc@w6xsc-4.ampr.org
- xndfs1 → forwarded to: xndfs1@w6xsc-4.ampr.org
- You can manually override (e.g. if w6xsc-4 is down):
 - xndeoc@w6xsc-2.ampr.org
 - xndfs1@w6xsc-2

© Copyright 2011 Santa Clara County ARES®/RACES. All rights reserved.

58

Example Scenario 1

- You are connected to W6XSC-1
- List all the ways you can send to:
 - Michael Fox (N6MEF) in Santa Clara

 - Pat Moore (K6PMM) in Gilroy

 - Xanadu EOC

© Copyright 2011 Santa Clara County ARES®/RACES. All rights reserved.

59

Example Scenario 1 – How'd you do?

- You are connected to W6XSC-1
- List all the ways you can send to:
 - Michael Fox (N6MEF) in Santa Clara
 - n6mef@w6xsc-1.ampr.org
 - n6mef@w6xsc-1
 - n6mef
 - Pat Moore (K6PMM) in Gilroy
 - k6pmm@w6xsc-2.ampr.org
 - k6pmm@w6xsc-2
 - Xanadu EOC
 - xndeoc@w6xsc-4.ampr.org
 - xndeoc@w6xsc-4
 - xndeoc

© Copyright 2011 Santa Clara County ARES®/RACES. All rights reserved.

60

Example Scenario 2 – W6XSC-1 is Down

- W6XSC-1 is Down; you are connected to W6XSC-2
- List all the ways you can send to:
 - Michael Fox (N6MEF) in Santa Clara
 - Pat Moore (K6PMM) in Gilroy
 - Xanadu EOC

© Copyright 2011 Santa Clara County ARES®/RACES. All rights reserved.

61

Example Scenario 2 – How'd you do?

- W6XSC-1 is Down; you are connected to W6XSC-2
- List all the ways you can send to:
 - Michael Fox (N6MEF) in Santa Clara
 - n6mef@w6xsc-3.ampr.org
 - n6mef@w6xsc-3
 - Pat Moore (K6PMM) in Gilroy
 - k6pmm@w6xsc-2.ampr.org
 - k6pmm@w6xsc-2
 - k6pmm
 - Xanadu EOC
 - xndeoc@w6xsc-4.ampr.org
 - xndeoc@w6xsc-4
 - xndeoc

© Copyright 2011 Santa Clara County ARES®/RACES. All rights reserved.

62

Example Scenario 3 – W6XSC-4 is Down

- W6XSC-4 is Down; you are connected to W6XSC-3
- List all the ways you can send to:
 - Michael Fox (N6MEF) in Santa Clara

 - Pat Moore (K6PMM) in Gilroy

 - Xanadu EOC

© Copyright 2011 Santa Clara County ARES®/RACES. All rights reserved.

63

Example Scenario 3 – How'd you do?

- W6XSC-4 is Down; you are connected to W6XSC-3
- List all the ways you can send to:
 - Michael Fox (N6MEF) in Santa Clara
 - n6mef@w6xsc-1.ampr.org
 - n6mef@w6xsc-1
 - Pat Moore (K6PMM) in Gilroy
 - k6pmm@w6xsc-2.ampr.org
 - k6pmm@w6xsc-2
 - Xanadu EOC
 - xndeoc@w6xsc-2.ampr.org
 - xndeoc@w6xsc-2

© Copyright 2011 Santa Clara County ARES®/RACES. All rights reserved.

64

AMPRnet Gateway (new)

- What is the AMPRnet?
 - The “AMateur Packet Radio network” is a worldwide IP network of packet radio systems.
 - AMPRnet address space = 44/8 (44.xxx.yyy.zzz)
- What is an AMPRnet gateway?
 - Interconnection between our network and AMPRnet
- Why is it useful?
 - All W6XSC BBSs can be reached from any BBS in the network
 - All W6XSC BBSs can reach any other BBS in the network
- How will we use it?
 - For connecting to other counties (and elsewhere) which are not reachable by radio
 - Example: Michigan connects all their counties this way
- How do I send messages to other AMPRnet users?
 - user@host.domain, where domain is ampr.net

© Copyright 2011 Santa Clara County ARES®/RACES. All rights reserved.

65

E-mail Gateway (new)

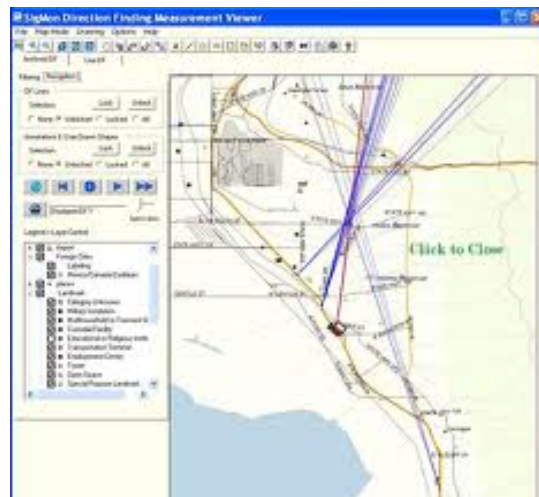
- What is an E-mail gateway?
 - Interconnection between packet messages and e-mail
- Why is it useful?
 - Connect to others who don't have packet capability
- How will we use it?
 - Messages to non-ham organizations
 - Message to ham organizations with no packet connection
 - Health & welfare traffic to family members
- How do I send messages to e-mail addresses?
 - user@host.domain – i.e. send to the regular email addr.
- Note: gateway is currently outbound only
 - Inbound is in the works; subject to Part 97 restrictions

© Copyright 2011 Santa Clara County ARES®/RACES. All rights reserved.

66



RADIO DIRECTION FINDING



RADIO DIRECTION FINDING BASICS

- Why we train to locate:
 - Faster “stuck microphone” resolution at events
 - Search and Locate assistance
 - Interference sources
 - Intentional jammers
 - For fun! – e.g. Fox hunts (T-hunts)
- Options for “pedestrian” RDF: and HT or Receiver and
 - “Body shielding”, with and without radio “shield” or tube
 - Time Of Arrival “box”, e.g. “HANDI-Finder¹” hand held
 - Loop antenna with and without an attenuator
 - Hand-held Yagi antenna with and without an attenuator
 - Yagi + “VK3YNG VHF Foxhunt Sniffer Mk 4” is the *best* combo. Pricey, but performance is excellent. See: <http://www.foxhunt.com.au/>

¹ See <http://www.handi-finder.com/>

What do you prepare for RDF?

- Practice, practice, practice
 - Get to know your RDF equipment
 - T-hunts (use your favorite search engine “sf bay area t-hunt”
 - Organize your own
 - SCC Drill and training opportunities
- Optional things to bring with you
 - Map
 - Compass
 - Straight-edge
- Download the RDF training class presentation read the “LINKS” page at the end for more information

Remember

- Above all else, your safety is number one!
- Obey all laws
- Often we are searching through public areas
 - RDF work will attract attention and questions
 - Be friendly, build public understanding and appreciation
 - Refer drill/event details to the PIO / IC
 - Ask them to visit the command post, etc. for more information
- RDF work is secondary to the public's right to be there
 - Proactively give way, maintain safe distances, etc.
 - Respect their privacy!



© Copyright 2011 Santa Clara County ARES®/RACES. All rights reserved.

71

How To Help the Santa Clara Valley (SCV) Official Observer Coordinator (OOC)

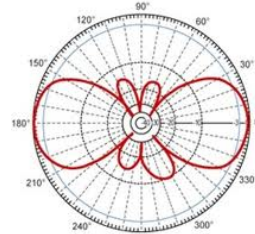
- SCV OOC: Andy Korsak KR6DD
 - Sometimes he needs help in locating jammers / interference
 - He mostly can be reached on N6NFI 145.23 MHz (-) PL100
- Types of help
 - Reporting bearings from home
 - Steerable antenna or walking outside and taking a bearing
 - Reception and power reports are useful
 - Participating in a Hunt
 - Some experience in DF'ing required
- Interested?
 - Contact Mark Laubach k6fjc@arrl.net via email. A questionnaire will be sent back then passed on to Andy for his "processing"

© Copyright 2011 Santa Clara County ARES®/RACES. All rights reserved.

72



Antenna Fundamentals



Antenna Safety (Summary)

© Copyright 2011 Santa Clara County ARES®/RACES. All rights reserved.

74

Learning Objectives

- Effectively choose and deploy Antennas at your operations site
- Mitigate communications impairments by making changes to antennas or their setup
- Mitigate communications impairments by changing your operating procedure
- Know the limitations of your equipment
- Playing by the rules

© Copyright 2011 Santa Clara County ARES®/RACES. All rights reserved.

75

Antenna Fund. & Safety - continued

- △ Effectively deploy and operate a multi-antenna, multi-radio, multi-band setup
- △ Keeping it safe
- △ Making it work

© Copyright 2011 Santa Clara County ARES®/RACES. All rights reserved.

76

Antenna Fund. & Safety - continued

Requires in-depth knowledge of

- ⌘ Antenna characteristics and placement
- ⌘ Radio characteristics
- ⌘ Feedline and antenna matching
- ⌘ RF isolation requirements for your radios

© Copyright 2011 Santa Clara County ARES®/RACES. All rights reserved.

77

Antenna Fund. & Safety - continued

Antenna Safety

- ⌘ Know your effective radiated power and distance requirements
(FCC mandated RF safety evaluation)
- ⌘ Keep wires and feedlines out of the way

© Copyright 2011 Santa Clara County ARES®/RACES. All rights reserved.

78

Antenna Fund. & Safety - continued

Mitigation of problems

- ^ Smart frequency planning (ICS-205)
- ^ Placement and adjustments of antennas
- ^ Lower power
- ^ Ferrite beads, choke baluns, filters
- ^ Only use one radio at a time

© Copyright 2011 Santa Clara County ARES®/RACES. All rights reserved.

79



© Copyright 2011 Santa Clara County ARES®/RACES. All rights reserved.

80

Santa Clara County RACES Alerting Process

© Copyright 2011 Santa Clara County ARES®/RACES. All rights reserved.

81

AlertSCC notification - RACES

- This is different information from any you may have provided on the Santa Clara County AlertSCC website. That is for notification that you will receive from Santa Clara County Office of Emergency Services to residents of Cities within Santa Clara County.
- If you want to be notified by Santa Clara County RACES Staff in the event of an activation or pending activation then you need to ensure your AlertSCC information is current and complete. See the next slide for what you need to provide.

© Copyright 2011 Santa Clara County ARES®/RACES. All rights reserved.

82

REMINDER – under “My Contact Information”

Contact Information

Home Phone# 408-555-1212

Work Phone#

Cell Phone#

Pager

e-mail #1 * pqm@garlic.com

e-mail #2

* denotes required field
at least one number is required

Verify email and contact numbers

AlertSCC Information

[What's this?](#)

County of Santa Clara
(format for phone & SMS numbers: 999-999-9999)

Phone #1 :

Phone #2 :

Phone #3 :

e-mail #1 :

e-mail #2 :

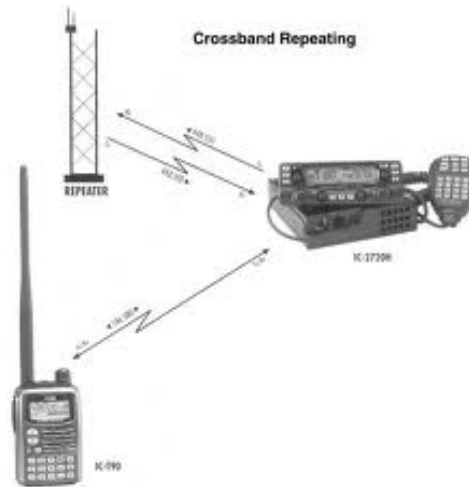
SMS #1 :

Note: to use AlertSCC, Phone #1 cannot be blank.
If it is blank, the other information is ignored.

Be sure to update your Alert SCC information



Cross-Band Repeating



© Copyright 2011 Santa Clara County ARES®/RACES. All rights reserved.

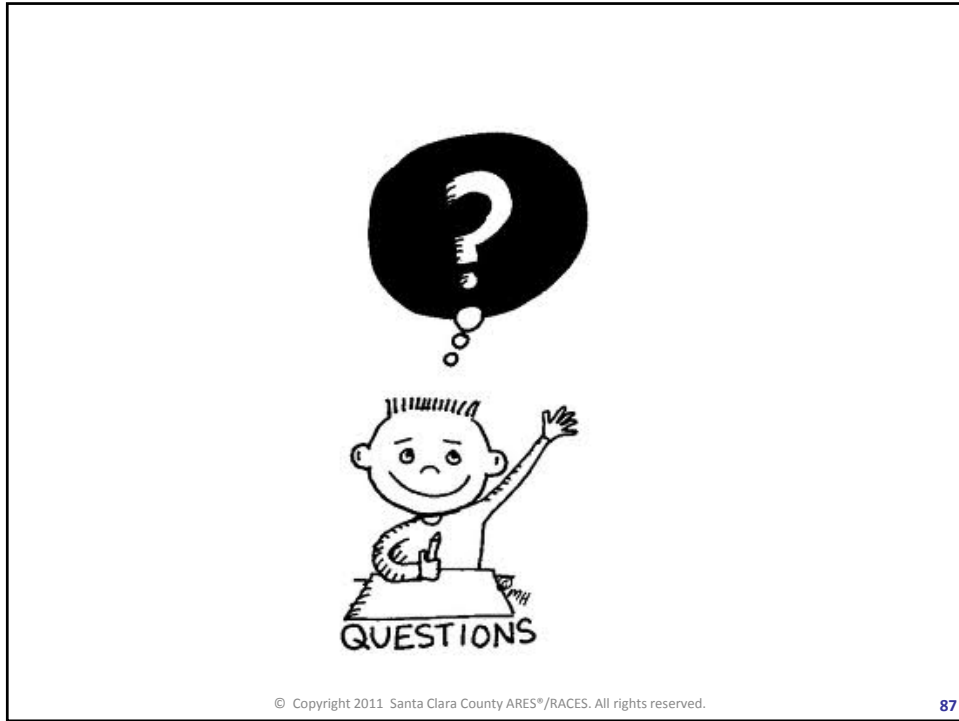
85

WHAT DOES THE FCC SAY?

- Sec. 97.201 Auxiliary station (a) Any amateur station licensed to a holder of a Technician, General, Advanced or Amateur Extra Class operator license may be an auxiliary station. A holder of a Technician, General, Advanced or Amateur Extra Class operator license may be the control operator of an auxiliary station, subject to the privileges of the class of operator license held. (b) An auxiliary station may transmit only on the 2 m and shorter wavelength bands, except the 144.0–144.5 MHz, 145.8–146.0 MHz, 219–220 MHz, 222.00–222.15 MHz, 431–433 MHz, and 435–438 MHz segments.
- (c) Where an auxiliary station causes harmful interference to another auxiliary station, the licensees are equally and fully responsible for resolving the interference unless one station's operation is recommended by a frequency coordinator and the other station's is not. In that case, the licensee of the non-coordinated auxiliary station has primary responsibility to resolve the interference.
- (d) An auxiliary station may be automatically controlled.
- (e) An auxiliary station may transmit one-way communications.
- [54 FR 25857, June 20, 1989, as amended at 56 FR 56171, Nov. 1, 1991; 60 FR 15687, Mar. 27, 1995; 63 FR 68980, Dec. 14, 1998; 71 FR 66462, Nov. 15, 2006; 75 FR 78171, Dec. 15, 2010]

© Copyright 2011 Santa Clara County ARES®/RACES. All rights reserved.

86



Santa Clara County OES ARES/RACES Frequency Lists



© Copyright 2011 Santa Clara County ARES®/RACES. All rights reserved.

88

SCC OES ARES/RACES Frequency List - updated

Santa Clara County OES, California
ARES®/RACES

[Home](#) [Operations](#) [Packet](#) [Training and Events](#) [Reference Info](#) [FAQ](#) December 8, 2011

OPERATIONS

Activation Info

[AlertSCC System Information for Hams](#)
[ARES®/RACES Activation Level Definitions](#)
[RACES Activation Numbers](#)

Contact Info

[Direct-Dial Emergency Numbers, Santa Clara Co.](#)
[County Staff \(DEC/ADEC\)](#)
[City Emergency Coordinators/Radio Officers](#)

Forms and Signs

[ICS Forms Used In Communications](#)
[Modified Mercalli Earthquake Reporting Scale](#)
[Modified Mercalli Earthquake Reporting Summary Form](#)
[Mutual Aid Request Forms](#)
[RACES Assignment Form \(also MS-Word version\)](#)
[Radio Communications Signs](#)
[Resource Net Travel Tracking Form \(also MS-Word version\)](#)

Frequency Lists

[County Voice Frequency List - \(Updated 28-Feb-2011\)](#)
[County Packet Frequency List and BBS Info](#)

For the most current information on ALL of the frequencies used by SCC RACES, ALWAYS check the frequency lists on the Operations page.

<http://www.scc-ares-races.org/operations.html>

© Copyright 2011 Santa Clara County ARES®/RACES. All rights reserved.

89



© Copyright 2011 Santa Clara County ARES®/RACES. All rights reserved.

90