

USE AND DISTRIBUTION NOTICE

- Santa Clara County RACES authorization is granted to use and duplicate this material as-is as long as this page and the copyright notices on each page are included, acknowledging Santa Clara County ARES/RACES as the holder of the copyright.
- Permission is granted to adapt this presentation to your needs as long as you acknowledge our copyright and include a note similar to "adapted with permission from Santa Clara County ARES/RACES"
- For additional information on training or any of our programs send an email to: info@scc-ares-races.org

Copyright © 2019 Santa Clara County ARES/RACES. All rights reserved.

1



**2019 Year End
Summary, Update,
Preview**



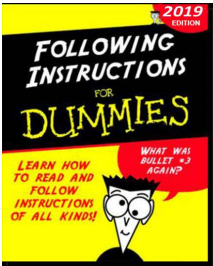
Santa Clara County ARES®/RACES
Revised: 14-Dec-2019

Copyright © 2019 Santa Clara County ARES/RACES. All rights reserved.

2

Housekeeping

- Introductions
- Pen/pencil & paper
- Cell phones on silent or vibrate
- Side conversations
- Questions – on topic
- No food or drink in room
 - Water only
- Breaks
- Restrooms
- In case of emergency




Copyright © 2019 Santa Clara County ARES/RACES. All rights reserved.

3

Agenda

- Cupertino PSPS Deployment
- Countywide Communications Exercise
 - Lessons Learned
 - Public Service Event Paper Trail
- Training Update
 - Cross-Band, Intermod, Net Control, Pop-up Practice
- Message Passing
- Packet Update
- Network Update
- DSW Volunteer Program
- Credentialing Program Update
- Recognition



Copyright © 2019 Santa Clara County ARES/RACES. All rights reserved.

4

**Cupertino PSPS
Deployment**

Jim Oberhofer, KN6PE
Darryl Presley, KI6LDM
Revised 11-Dec-2019

Copyright © 2019 Santa Clara County ARES/RACES. All rights reserved.

5

Cupertino PSPS Activations



Copyright © 2019 Santa Clara County ARES/RACES. All rights reserved.

6

Cupertino PSPS Activations
 CUP-19-100, Oct08 PSPS

- On 8-October-2019, PG&E initiated a PSPS event that ultimately impacted more than 1M customers of which 3,300 homes and businesses were in Cupertino.
- The Cupertino EOC was activated and identified 4 objectives:
 - Public outreach to affected residents and community
 - Personal contact with affected residents; leave flyers
 - Establish personal electronics charging stations at City facilities
 - Monitor the situation; participate in County conference calls
- Cupertino Citizens Corps (CCC) was tasked to lead the field response and execute Objectives #1 and #2:
 - ICP at Monta Vista Fire Station ARK
 - Logistical and resource support from City GIS, PIO, and staff

Copyright © 2019 Santa Clara County ARES/RACES. All rights reserved.

7

What did the deployment look like?
 CUP-19-100, Oct08 PSPS

- City staff decided to do an information outreach to the affected residents
- Cupertino EOC activated to Level 3, CCC to Level 1
- CCC took the lead in the field
- PG&E identified the affected addresses
- IT's GIS team developed the PSPS coverage maps
- City Managers Office developed a hand-out to be left with every affected resident, either in person or by the door.
- City GIS deployed their GIS Collector App
- ICP requested additional resources; city staff responded

Copyright © 2019 Santa Clara County ARES/RACES. All rights reserved.

8

By the numbers
 CUP-19-100, Oct08 PSPS

	Oct08 PSPS CUP-19-100
Homes, Businesses impacted	3,300
Total Canvasser hours	304
CCC volunteer canvas hours	189
City staff canvass hours	115
Hours of the power outage	14
Days activated	3

Copyright © 2019 Santa Clara County ARES/RACES. All rights reserved.

9

Cupertino PPS Activations

CUP-19-200, Oct26 PPS

- On 24-October-2019, PG&E initiated a PPS event that impacted 88 addresses and 160 unincorporated addresses within Cupertino's sphere of influence.
- On Saturday 26-October, Cupertino EOC was activated and Cupertino Citizens Corps was tasked to lead the field response:
 - ICP at Regnart School ARK
 - Logistical and resource support from City GIS, PIO

Copyright © 2019 Santa Clara County ARES/RACES. All rights reserved.

10

By the numbers

CUP-19-200, Oct26 PPS

	Oct08 PPS CUP-19-100	Oct26 PPS CUP-19-200
Homes, Businesses impacted	3,300	248
Total Canvasser hours	304	104
CCC volunteer canvas hours	189	95
City staff canvass hours	115	11
Hours of the power outage	14	60
Days activated	3	1

Copyright © 2019 Santa Clara County ARES/RACES. All rights reserved.

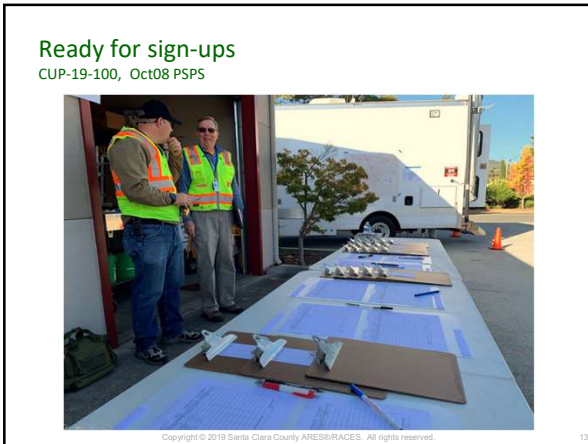
11

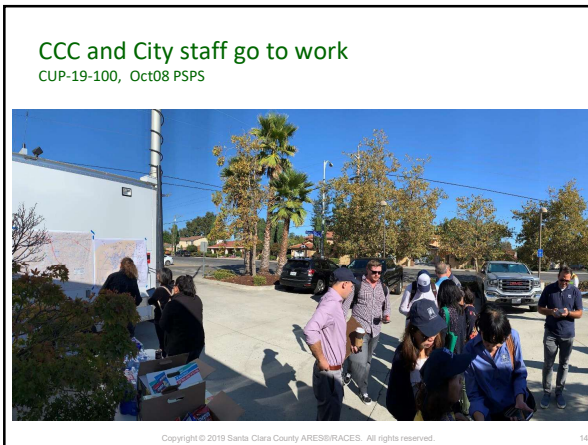
First day canvas results

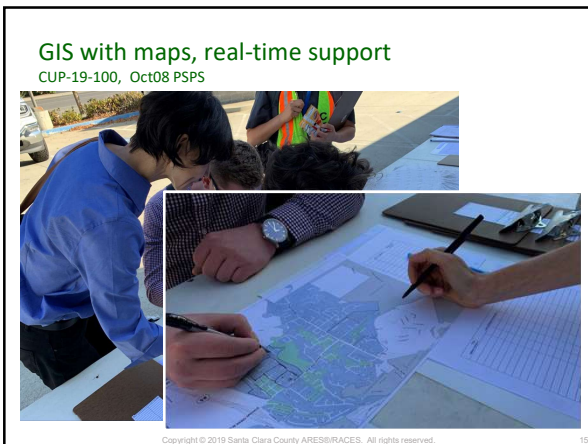
CUP-19-100, Oct08 PPS

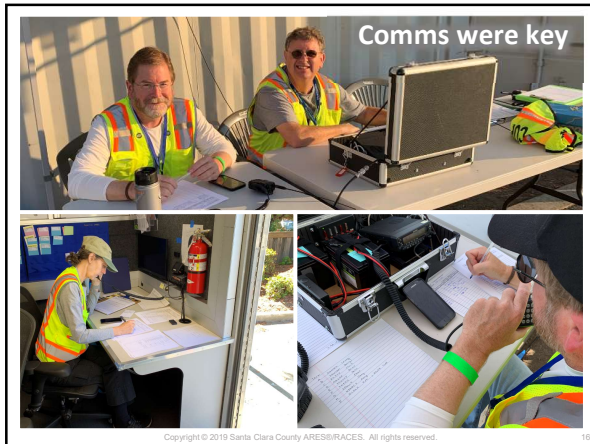
Copyright © 2019 Santa Clara County ARES/RACES. All rights reserved.

12





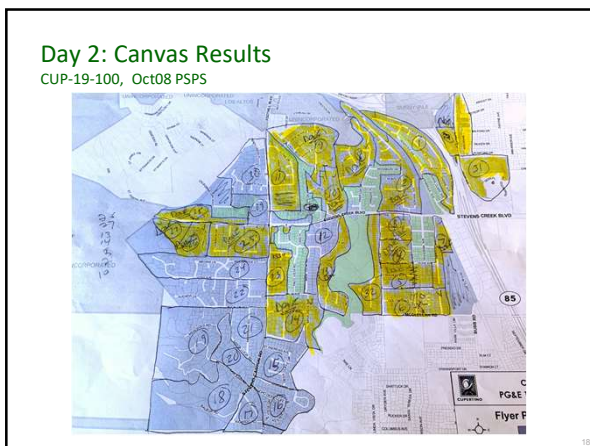




16



17



18

Day 3: The Power Shutoff
 CUP-19-100, Oct08 PSPS

- Wednesday, ~23:00: Power goes out
- Thursday Morning: cell tower batteries quit
- Amateur Radio was the only means for contacting field teams and the EOC.
- EOC becomes aware of cell tower outages and modifies their EOC Action Plan (EAP)

Copyright © 2019 Santa Clara County ARES/RACES. All rights reserved. 19

19

Day 3: The Power Shutoff – Comms
 CUP-19-100, Oct08 PSPS

- We did not have enough ARES folks to staff all teams
- Resource and message nets were combined due to fewer CARES volunteers
- There were no issues combining the two nets
- Communications with ARES members of Field teams and the EOC was maintained at all times on Amateur radio message net

Copyright © 2019 Santa Clara County ARES/RACES. All rights reserved. 20

20

Day 3: The Power Shutoff – Comms
 CUP-19-100, Oct08 PSPS

- Amateur Radio Nets
 - Communications with ARES members of Field teams and the EOC was maintained at all times on Amateur radio message net
- Cell Phone Nets
 - Field teams without ARES members provided cell phone numbers to the ICP
 - Health & Welfare checks were conducted by calling/texting the cell phone number of the Field team
- Cell phone nets worked on Days 1 and 2 but NOT on Day 3
 - Cell phone coverage was sporadic
 - We lost contact with some Field teams until they returned to the ICP

Copyright © 2019 Santa Clara County ARES/RACES. All rights reserved. 21

21

Five take-aways

1. **Documentation is key**
 City received all field paperwork (forms, reports, etc.) and were looking specifically for...

- Field responder injuries
- Report-out of unusual interactions with residents
- Documenting residents at risk from loss of power
- Support City After Action report to County

ICS214 Excerpt

1045	ARRIVED @ Assignment 1
1100	FIELD REPORTED mal problem requires electrical
1150	Stoken med dev use requires electricity.
1205	FIELD REPORT requires replacement also check VACUUM
1250	END of AREA - Reported to next Unit

22

Five take-aways

2. **Community readiness**

- Encountered residents who were ill prepared for a power shutoff.
- Some were totally unaware that a shutoff was imminent.
- The largest category of these residents were elderly and Access and Functional Needs (AFN) individuals.
- If residents are not prepared for an event that was well publicized, then they will not be prepared for the earthquake that will hit unannounced.

3. **City reliance on Cupertino Citizen Corp**

- City relied on CCC to manage the field response.
- With specific objectives in hand, CCC put a plan in place to deliver results.
- Strong relationship between CARES, CERT, MRC and City staff made this happen.

23

Five take-aways

4. **Practice makes perfect**

- Used several processes and procedures that have been well practiced during exercises and public service events.
- City recognized our capabilities and relied on us as a reliable and competent partner.

5. **When all else fails...**

- Amateur radio was truly the communications means of last resort.

24

2019 Countywide Communications Exercise

Michael E Fox, N6MEF
Andreas Ott, K6OTT
Revised 11-Dec-2019

Copyright © 2019 Santa Clara County ARES/RACES. All rights reserved. 25

25

How Do We Prepare For A Response?

2019 Countywide Communications Exercise

Copyright © 2019 Santa Clara County ARES/RACES. All rights reserved. 26

26

Planning and Preparation

- Format
 - Input from jurisdictions: multi-activity exercise
- Location
 - Support our unique needs: group size, generators, pop-ups, etc.
 - Thanks to Campbell for facilitating!
- Goals for Participant Experience
 - Everyone leaves each activity a better operator
 - Everyone has fun
- Training Goals
 - All: Field deployment (procedures, equipment, operating, ...)
 - Leadership: Exercise/event planning and operations
 - Credential candidates: Performance evaluations
- A total of approximately 550 hours spent planning, preparing!

Copyright © 2019 Santa Clara County ARES/RACES. All rights reserved. 27

27

Staging - Sunnyvale



28

Staging - Sunnyvale



29

Staging - Sunnyvale



30

Radio Programming - Saratoga



Copyright © 2019 Santa Clara County ARES/RACES. All rights reserved.

31

31

Radio Programming - Saratoga



Copyright © 2019 Santa Clara County ARES/RACES. All rights reserved.

32

32

Field Comms (Intro) - Campbell



Copyright © 2019 Santa Clara County ARES/RACES. All rights reserved.

33

33

Field Comms (Intro) - Campbell



Copyright © 2019 Santa Clara County ARES/RACES. All rights reserved.

34

Field Comms (Intro) - Campbell



Copyright © 2019 Santa Clara County ARES/RACES. All rights reserved.

35

Net Control (Intro) - Cupertino



Copyright © 2019 Santa Clara County ARES/RACES. All rights reserved.

36

Net Control (Intro) - Cupertino



Copyright © 2019 Santa Clara County ARES/RACES. All rights reserved.

37

37

Net Control (Intro) - Cupertino



Copyright © 2019 Santa Clara County ARES/RACES. All rights reserved.

38

38

Packet – Mountain View



Copyright © 2019 Santa Clara County ARES/RACES. All rights reserved.

39

39

Packet – Mountain View



Copyright © 2019 Santa Clara County ARES/RACES. All rights reserved.

40

40

Packet – Mountain View



Copyright © 2019 Santa Clara County ARES/RACES. All rights reserved.

41

41

Packet – Mountain View



Copyright © 2019 Santa Clara County ARES/RACES. All rights reserved.

42

42

Net Control (Experienced) - Milpitas



Copyright © 2019 Santa Clara County ARES/RACES. All rights reserved.

43

Net Control (Experienced) - Milpitas



Copyright © 2019 Santa Clara County ARES/RACES. All rights reserved.

44

Net Control and Packet



Copyright © 2019 Santa Clara County ARES/RACES. All rights reserved.

45

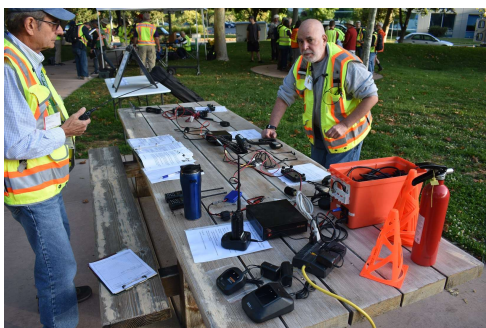
Field Comms (Experienced) – San Jose



Copyright © 2019 Santa Clara County ARES/RACES. All rights reserved.

46

Cross-band Repeat – Los Altos Hills



Copyright © 2019 Santa Clara County ARES/RACES. All rights reserved.

47

Shadow – Andreas Ott



Copyright © 2019 Santa Clara County ARES/RACES. All rights reserved.

48

County Fire, Comms, Sheriff, EMS

(Displayed vehicles; explained public safety comms capabilities)



Copyright © 2019 Santa Clara County ARES/RACES. All rights reserved.

49

Mark Schroeder, W7KHZ (County Comms)

Matt Yost, N6FYR (County Fire)



Copyright © 2019 Santa Clara County ARES/RACES. All rights reserved.

50

SCCo Office of Emergency Management
(and Bob)



Copyright © 2019 Santa Clara County ARES/RACES. All rights reserved.

51

Statistics - Day of the Exercise

- Participation:
 - 120 amateur radio operators (52 "new", licensed since 2015)
 - 12 agency/CERT/guests
 - Over 650 volunteer hours (onsite that day)
 - 16 agencies simulated
 - 17 communities represented
- Activities
 - Approximately 180 activities completed
 - People/#Activities: 3/4; 17/3, 25/2, 23/1
 - Staff: 52
- 100% of stations on emergency power (except BBS)
- Formal Message count: voice 12 (?), packet 101
- Probably our highest score ever for the ARRL Simulated Emergency Test (probably top 10)

Copyright © 2019 Santa Clara County ARES/RACES. All rights reserved.

52

What Went Right?

- Lots of participation
 - Lots of experience gained by new operators
 - Experience gained by many others who rarely attend exercises
 - Lots of planning experience gained at the city level
- Two main participant goals achieved
 - People learned new skills or improved existing skills at each activity
 - They had fun doing it
 - Confirmed by nearly unanimous feedback ...
- But ...

Copyright © 2019 Santa Clara County ARES/RACES. All rights reserved.

53

Houston, We Have a Problem

- Missing paperwork (some was not turned in at all)
- Paperwork was missing lots of information
- In general, very hard to recreate what happened from the paperwork
- Had this been a real event, or had a real problem occurred, the paperwork would not have been adequate
- For example ...

Copyright © 2019 Santa Clara County ARES/RACES. All rights reserved.

54

ICS-214 Unit Log Bad Examples

The form contains the following handwritten entries:

- 1. Incident Name and Activation Number:** ICS 214-SCCO
- 2. Operational Period (Date/Time):** 09-18-19 From 0800 To 1200
- 3. Unit Name / Tactical Call / Designator:** ARES/RACES
- 4. Unit Leader (Name, Call Sign, ICS Position):** SET XSO 1311
- Personnel Roster Assigned:**

Name	Call Sign	ICS Position	Home Base/City
- 6. ACTIVITY LOG:**

Time (24:00)	Major Activities & Events / Occasional Messages (Indicate From / To / Msg# / Msg Text)
09:18	ARRIVE FIELD OPS
10:28	SIGN OUT FIELD OPS
11:15	Sign in Crowsband
11:35	Sign out Crowsband

55

ICS-214 Unit Log Bad Examples

The form contains the following handwritten entries:

- 1. Incident Name and Activation Number:** XSC-19-OTT
- 2. Operational Period (Date/Time):** 09-18-19 From 0800 To 1300
- 3. Unit Name / Tactical Call / Designator:** ARES/RACES
- 4. Unit Leader (Name, Call Sign, ICS Position):** Captain [unclear]
- Personnel Roster Assigned:**

Name	Call Sign	ICS Position	Home Base/City
		Ops out	S. [unclear]
- 6. ACTIVITY LOG:**

Time (24:00)	Major Activities & Events / Occasional Messages (Indicate From / To / Msg# / Msg Text)
08:04	Depart Brian Central 315
08:08	Search for Jags 146, 473 315
08:43	Sign In PSN
09:28	Depart
13:09	Check out

56

ICS-214 Unit Log Bad Examples

The form contains the following handwritten entries:

- 1. Incident Name and Activation Number:** ICS 214-SCCO
- 2. Operational Period (Date/Time):** 09-18-19 From 0800 To 10:00
- 3. Unit Name / Tactical Call / Designator:** ARES/RACES
- 4. Unit Leader (Name, Call Sign, ICS Position):** [unclear]
- Personnel Roster Assigned:**

Name	Call Sign	ICS Position	Home Base/City
- 6. ACTIVITY LOG:**

Time (24:00)	Major Activities & Events / Occasional Messages (Indicate From / To / Msg# / Msg Text)
08:00	Packet Network
08:30	Lab Packet Network
11:00	Invo Net Control Practice
12:00	End Invo Net Control Practice

57

Routing Slip Bad Example

58

ICS-309 Comm Log Bad Examples

Time (24:00)	Call Sign/ID	Msg #	Message
06:28	CA EOC	CB1005	FORMAL PRACTICE MESSAGE
08:45	CA EOC	CB1005	FORMAL PRACTICE MESSAGE
09:55	CANDLER	001	FORMAL PRACTICE MESSAGE

59

ICS-309 Comm Log Bad Examples

Time (24:00)	Call Sign/ID	Msg #	Message

60

ICS-309 Comm Log Bad Examples

Copyright © 2019 Santa Clara County ARES/RACES. All rights reserved.

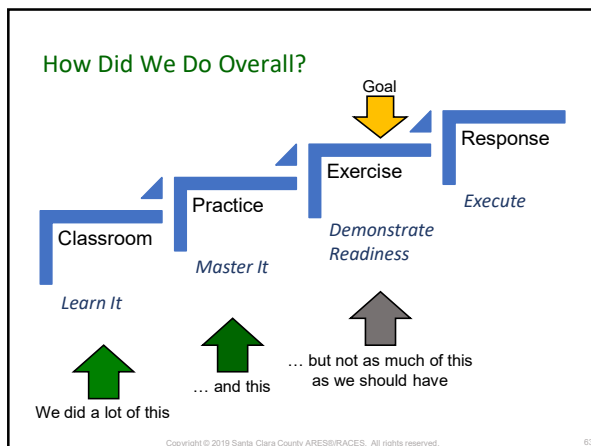
61

Bottom Line

- Approximate error rate on forms = 30%
 - Even though there are instructions on the back of each form!
- Most errors were from people who are not trained
 - Brand new; didn't take classes yet
 - Been around, but haven't kept up with training
- Those who regularly attend our training activities made few to no errors!
- Clearly, training classes and practice is the answer

Copyright © 2019 Santa Clara County ARES/RACES. All rights reserved.

62



63

How Do We Improve?

- Increase focus on learning proper procedures
 - Review and take retake core classes
 - Field Comms, Net Control, Packet, Shadow, Message Passing...
 - Covers ICS forms used on a deployment; lots of examples
 - Recommend retaking at least every two years
 - Review Self-paced Videos
 - ICS-214 Unit Activity Log
 - Review online documentation
 - <https://www.scc-ares-races.org/operations.html>
- Increase focus on practice BEFORE the exercise or response
 - Monthly message passing net
 - Form local practice groups; mentored by best (credentialed) operators
 - New pop-up practice opportunities coming

Copyright © 2019 Santa Clara County ARES/RACES. All rights reserved. 64

64

For more info ...

Learning: Instructor-led, self-paced, online
 Practice: Nets, Drills, Exercises
<https://www.scc-ares-races.org/training.html>

Copyright © 2019 Santa Clara County ARES/RACES. All rights reserved. 65

65

**Lessons Learned
 Injury at a
 Public Service Event**

Dan Pugh, KM6GNG
 Revised 11-Dec-2019

Copyright © 2019 Santa Clara County ARES/RACES. All rights reserved. 66

66

Why are all the Paperwork/Logs Necessary?

- Why is all of the paperwork necessary?
 - FEMA may look at practice event paperwork to see if it is done correctly
 - A poor history of improperly filled out forms can result in losing reimbursement funds after a real emergency (flooding, earthquake, etc.)
 - If there are questions after the activity, specifically an accident, a timeline of the event can be recreated
 - A "practice" event can turn into a real emergency incident at anytime
 - If you can't complete the paperwork correctly during exercises, you'll never complete it correctly under the stress of a real incident

Copyright © 2019 Santa Clara County ARES/RACES. All rights reserved.

67

67



- Hosted at Monterey Laguna Seca Raceway and Fort Ord back country
- 4 days, 10,000 cyclists, 70,000 spectators
- Ham radio operators set up 10-12 radio stations in the back country that has little or no cellular coverage and unpaved roads
- These stations provide a means to communicate emergency medical and support assistance in the case of an accident
- Most of the incidents were disabled cycles and minor cuts/abrasions, with the exception of one with a head injury
- All of the incidents were logged at the individual stations and the net control station

Copyright © 2019 Santa Clara County ARES/RACES. All rights reserved.

68

68

Head Injury at Marshal Point 11 (MP11)

From MP11 Station Log and Net Control Log:

- 11:21: Cyclist reported down (200 yds away) with lacerations; On site medic en route, 200 yards short of MP11, Rider Green bib ##### (no personal information)
- 11:35: Medic treating rider #####, punctured knee, reported hitting head
- 11:56: Green ##### pin-point pupils, requesting EMS support
- 12:00: Rider ##### becoming unresponsive
- 12:01: Rider ##### conscious but having trouble responding
- 12:02: Fire en route to MP11
- 12:05: National Ski Patrol medic arrives at MP11, assisting with rider
- 12:07: Fire Dept at MP11
- 12:20: NSP and Fire transporting rider ##### to paved road with awaiting ambulance for final transport

Copyright © 2019 Santa Clara County ARES/RACES. All rights reserved.

69

69

After the Accident

- Sunday, April 14th: Accident occurred
- Tuesday, April 16th: Received email, hospital requesting location of rider ##### helmet and glasses
- Wednesday, April 17th: Receive a phone call interview from the Ski Patrol medical lead requesting my observations of the incident. After the interview, I told him that he can correlate my observations with my station log and the Net Control Station log turned in to the Communications Lead
- The timeline of the accident was verified with the paperwork to prove that the medical response was proper and timely

Copyright © 2019 Santa Clara County ARES/RACES. All rights reserved. 70

70

Training Update

Tim Howard, KE6TIM
 Andreas Ott, K6OTT
 Mark Laubach, K6FJC
 Revised 11-Dec-2019

Copyright © 2019 Santa Clara County ARES/RACES. All rights reserved. 71

71

Cross-band Repeating Update

Copyright © 2019 Santa Clara County ARES/RACES. All rights reserved. 72

72

Upcoming in 2020

- More contributed reference sheets in handout
- Please go and try it on your radio
- Class will incorporate lab where you can try it yourself
- If you have additional radios or corrections tell us about it

Copyright © 2019 Santa Clara County ARES/RACES. All rights reserved. 73

73

Antenna Fundamentals Update

Intermodulation Calculations

Copyright © 2019 Santa Clara County ARES/RACES. All rights reserved. 74

74

Lots of Combinations Are Possible

- 2019 countywide drill had ~ 25 frequencies to coordinate, transmitting on any two frequencies simultaneously will produce intermodulation distortion on a third frequency
- For N number of frequencies, f , Intermodulation products will exist at the frequencies

$$k_1f_1 + k_2f_2 + \dots + k_Nf_N$$
 where k_1, k_2, \dots, k_N are arbitrary positive or negative integers
- Intermodulation Order = $|k_1| + |k_2| + \dots + |k_N|$
(Sum of the absolute values of the k factors)
- Example of determining the order
 $2f_1 - (1)f_2 \rightarrow 2 + 1 = 3 \rightarrow 3^{\text{rd}}$ order
 $(1)f_1 - (1)f_2 + (1)f_3 \rightarrow 1 + 1 + 1 = 3 \rightarrow 3^{\text{rd}}$ order
- Example of calculating an intermod frequency $2f_1 - f_2$
 $f_1 = 146.640 \quad f_2 = 147.370$
 $2 * 146.640 - 147.370 = 145.910$

Copyright © 2019 Santa Clara County ARES/RACES. All rights reserved. 75

75

Remedies

- Frequency Choice
 - Use widely spaced frequencies
 - Use a software tool to calculate IMD products and make sure they don't fall on (or near) another frequency in use
 - Simple spreadsheet tool will available on county web site
- Antenna spacing – horizontal and vertical
 - IMD may form but be too weak to cause problems
- Power
 - Reducing power of the fundamental frequency also reduces the power of the intermodulation products

Copyright © 2019 Santa Clara County ARES/RACES. All rights reserved.

76

Intermod Calculator Spreadsheet (beta)

- Come to 2020 Antenna Fundamentals Class for more on this
- Follow instructions on sheet where to enter your two simplex, one simplex plus a repeater output/offset, and a third receive frequency
- Calculation for two transmit frequencies is performed for you, results are checked against three receive frequencies
- For two transmitters, the four most interesting 3rd order products are displayed and cells use conditional formatting to display red background if too close to the third frequency
 - $(2f_1-f_2)$, $(2f_2-f_1)$, $(2f_1+f_2)$, $(2f_2+f_1)$
 - The first two are of most interest because they are near the two transmitters (or may land close to other nearby receivers)
 - The last two are typically out of band (beware of VHF/UHF)
 - Won't affect our other receivers
 - Could affect other radio services at a shared transmitter site if not filtered, but not so important for an isolated ham radio event
- Bonus: Spreadsheet also calculates 3rd harmonics

Copyright © 2019 Santa Clara County ARES/RACES. All rights reserved.

77

Intermod Calculator Spreadsheet (beta)

The spreadsheet shows the following data:

Frequencies	f1 output	f1 input	f2 output	f2 input	f3 output	f3 input
repeater offset	145.175	144.575	147.500	147.500	442.500	447.500
	0.000	0.000	0.000	0.000	0.000	0.000

Product category	3rd order	Intermod	ABS(Intermod)	4.000	5.200	2.300	2.300	290.070	297.070
interesting	f1+f2-f3	-148.825	148.825	0.000	0.000	0.000	0.000	-290.070	-297.070
interesting	f1+f2+f3	444.630	444.630	299.660	300.260	297.530	297.530	-2.330	-2.330
interesting	f1-f2+f3	440.170	440.170	299.500	299.600	292.670	292.670	-2.330	-2.330
very interesting	2f1-f2	-142.840	142.840	2.330	-4.790	-4.860	-4.860	-298.660	-304.860
very interesting	2f1+f2	142.840	142.840	0.000	0.000	0.000	0.000	-298.340	-304.340
very interesting	2f2-f1	-148.825	148.825	4.860	0.360	2.330	2.330	-293.670	-297.670
very interesting	2f2+f1	147.500	147.500	2.330	2.330	0.000	0.000	-295.000	-300.000
interesting	3f1	435.525	435.525	299.340	299.640	288.810	288.810	-4.990	-11.990
interesting	3f2	442.500	442.500	297.530	297.830	299.560	299.560	0.000	4.000
3rd harmonics	3f3	1327.5	1327.500	1182.330	1182.930	1180.800	1180.800	885.000	888.000
3rd harmonics	3f2	442.500	442.500	297.530	297.830	299.560	299.560	0.000	4.000
outliers	3f1+f2	877.845	877.845	292.870	293.270	299.340	299.340	-4.660	0.000
outliers	3f1+f3	732.840	732.840	587.670	588.270	585.340	585.340	-290.340	-285.340
outliers	2f1+f2	440.170	440.170	299.500	299.600	292.670	292.670	-2.330	-2.330
outliers	2f1+f3	297.500	297.500	693.300	692.600	689.930	689.930	298.000	296.000
outliers	2f2+f1	147.500	147.500	885.000	885.600	882.670	882.670	587.670	582.670
outliers	2f2+f2	295.000	295.000	588.330	588.930	586.000	586.000	290.000	285.000

Copyright © 2019 Santa Clara County ARES/RACES. All rights reserved.

78

Net Control Update

Copyright © 2019 Santa Clara County ARES/RACES. All rights reserved. 79

79

Net Control Classes Changes For 2020

- More material will be moved to pre-study homework
 - We don't need to spend class time to review every slide
 - There will time for Q&A on the homework material at start of each class before the Quiz
- Allowing more time for in class exercises

Copyright © 2019 Santa Clara County ARES/RACES. All rights reserved. 80

80

Training Program Update

Copyright © 2019 Santa Clara County ARES/RACES. All rights reserved. 81

81

Practice vs Experience

- Practice is getting you ready for your performance
- Practice is the dress rehearsal
- Experience is doing the performance many times in varying situations and conditions
- Many operators do not get the practice needed to be good communicators when they move on to the performance part (real event) of being a radio operator
- Some cities try and provide the practice, but most operators need more practice

Copyright © 2019 Santa Clara County ARES/RACES. All rights reserved. 82

82

Pop-up Packet Practice

- Very successful short half-day event to get some practice
- An opportunity to test equipment in a deployed environment
- Half day Morning activity in a park or parking lot
- Participation is quick and easy.
 - Travel to the location
 - Set up your station, send/receive a few messages (~ 1 hour)
 - Pack up your station - Be home for lunch
- No AC Power. No Generators. Should be able to run 1 hour on batteries.
- Mentors available to assist
- Opportunities for P3 & P2 evals and MAC Credit

Copyright © 2019 Santa Clara County ARES/RACES. All rights reserved. 83

83

NEW! Net Control Pop-Up Practice

- Modeled on Intro to NC activity at Countywide Exercise
- Can be held indoors - no weather concerns
- Short event, just a couple of hours
- Mentor intensive

Copyright © 2019 Santa Clara County ARES/RACES. All rights reserved. 84

84

NEW! Message Passing Pop-Up Practice

- Message Passing Pop-Up Practice
- Can be held indoors – no weather concerns
- Short event, just a couple of hours
- Can provide more individual feedback than allowed on Message Passing Net
- Mentor intensive

Copyright © 2019 Santa Clara County ARES/RACES. All rights reserved. 85

85

Experience

- County Quarterly Drills (city or county positions)
- Net Control for City Nets
- Net Control for SPECS & SVECS Nets
- Hospital Net
- Various Drills and Exercises – city and county
- Countywide Communications exercise
- Numerous Public Service Events
 - Festivals, Parades, Fourth of July, Foot and Bike races/rides

Copyright © 2019 Santa Clara County ARES/RACES. All rights reserved. 86

86

We can use your help

- 22 Instructor led classes
- Mentors needed for Pop-up events
- You will learn more by teaching or mentoring
- If you are willing and qualified, we can use your help
 - Instructor qualifications shown on web site
 - <https://www.scc-ares-races.org/training.html>
 - (Scroll down to "Instructors" section)

Copyright © 2019 Santa Clara County ARES/RACES. All rights reserved. 87

87

**Message Passing
Update**

Michael Fox, N6MEF
Revised 11-Dec-2019

Copyright © 2019 Santa Clara County ARES/RACES. All rights reserved. 88


88

New This Year

- General Procedures
 - Roles
 - Message Numbers
 - Message Prioritization
 - 3rd Party Written Messages
 - Radio Routing Information
 - Radio Routing Slip
 - Form Routing Cheat Sheet
- Voice Procedures
 - Consistent procedures
 - ARRL NTS vs. ARES/RACES
 - New Prowords: Symbol(s), Mixed Group Symbol(s)

Copyright © 2019 Santa Clara County ARES/RACES. All rights reserved. 89

89

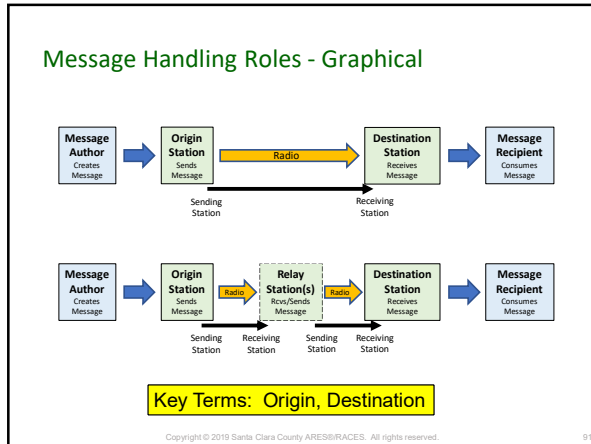


General Procedures

Applies to voice and data messages

Copyright © 2019 Santa Clara County ARES/RACES. All rights reserved. 90

90



91

Message Numbers

- ICS-213 Message form still has three message numbers. Ugh.
 - Ambiguous terms: sender, receiver
 - We hope to have that updated in the first part of 2020.

MESSAGE FORM Use Ballpoint Pen-Press Hard; Print Clearly <small>(Use back for instructions)</small>	When Receiving Msg: ² Sender's Msg Nr.	Message Number	When Sending Msg: ³ Receiver's Msg Nr.
--	--	----------------	--

- All new forms have only two message numbers
 - Origin Message Number
 - Destination Message Number

Radio Operator Only:	Origin Msg #:	Destination Msg #:
----------------------	---------------	--------------------

Copyright © 2019 Santa Clara County ARES/RACES. All rights reserved. 92

92

Message Prioritization

- "Severity" is no longer part of message prioritization
 - Also removed from all forms except ICS-213 Message
- Messages are handled in priority order, according to:
 - Handling order
 - Date
 - Time

Copyright © 2019 Santa Clara County ARES/RACES. All rights reserved. 93

93

3rd Party Written Messages

Message Author
Creates Message

Origin Station
Sends Message

- 3rd party written messages always use an appropriate form
 - General messages on ICS-213; resource requests on EOC-213RR; etc.
- If the message is not on the appropriate form:
 - Best: Ask the author to use the correct form
 - If they don't have one, provide it to them
 - Else: Transcribe the message to the form, asking the author to clarify as you go
 - Clarify spelling, other details
 - Last Resort: Staple to an appropriate form only if necessary
 - Papers can become detached, separated
 - Staples, paper clips, and odd paper sizes can cause problems when scanning/copying

Copyright © 2019 Santa Clara County ARES/RACES. All rights reserved. 94

94

Radio Routing Information

- Written messages must have routing information that a radio operator needs to send, deliver, and track a message
 - Message Numbers
 - Date, Time
 - Handling Order
 - To/From
 - Radio Operator Info
- Some forms contain these fields
 - Example: ICS-213 SCCo
- Some don't

Copyright © 2019 Santa Clara County ARES/RACES. All rights reserved. 95

95

Fillable PDF Forms for 3rd Party Messages

Created by SCCo ARES/RACES

- General Use
 - ICS-213 Message
 - WebEOC OA Municipal Status
 - WebEOC OA Shelter Status
- Hospital
 - EMResource HAVBed Report
 - WebEOC Medical Facility Status
- RACES
 - RACES Mutual Aid Request

Contain Radio Routing Info

Created by Others

- General
 - EOC-213RR Resource Request
 - Allied Health Facility Status
- Hospital
 - Medical Resource Request
- Any other form ...

Do NOT Contain Radio Routing Info

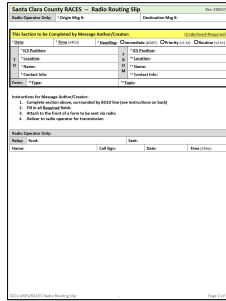
What info do we need?
Where can we write it?
How can we execute consistently?

Copyright © 2019 Santa Clara County ARES/RACES. All rights reserved. 96

96

Radio Routing Slip

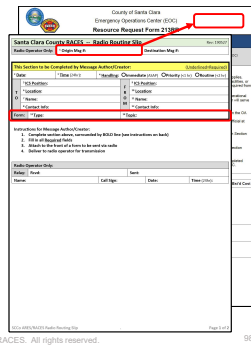
- Use when sending or receiving a form that does not contain radio routing info
 - A place to write the missing fields
 - Ensures consistency of operations
- NOT a substitute for an ICS-213 Message Form
 - Do **NOT** write a message on the Radio Routing Slip



97

Connecting Form and Routing Slip

- Attach routing slip to the front of the form being sent/received
 - Staples, ...
- Write Origin Msg Nbr on the top right of the agency's form
 - Helps you find the corresponding Routing Slip if it becomes detached
- Write Form Type / Topic on the Routing Slip
 - Helps you find the corresponding form if it becomes detached



98

Announcing a Message

- **Step 1:** Announce quantity and handling order; wait for “go”
 - Examples
 - “Net Control, I have 2 Priority messages for you”
 - “Net Control, I have 1 Immediate and 1 Routine message for you”
 - The receiving station will prioritize vs. other messages that may be waiting. When ready, will say: “go ahead” or “ready to copy”
- **Step 2:** Announce message type before sending; wait for “go”
 - Let the receiver know what’s coming so they can prepare the right form (and routing slip, if used)
 - “Message type is ICS-213”
 - “Message type is 213RRR with Routing Slip”
 - “Message type is informal” (ex. unstructured, non-form-type messages)
 - The receiving station readies the right form (and routing slip, if needed), then: “go ahead” or “ready to copy”
- **Step 3:** Send the message

99

Form Routing Cheat Sheet

Copyright © 2019 Santa Clara County ARES/RACES. All rights reserved. 100

100

What If Message Author Doesn't Know?

- The author of a 3rd party message may not know the proper Handling Order or TO address info
 - They usually enter their data into an online system
 - The "system" handles it from there
 - Not sure which "ICS Position" should get the message (varies by form)
- They may not know how quickly it should be sent
- Radio operators may not know either

Date: _____		Time (24hr): _____		Handling: <input checked="" type="radio"/> Immediate (ASAP) <input type="radio"/> Priority (<1 hr) <input type="radio"/> Routine (<2 hr)	
T O	ICS Position: _____		ICS Position: _____		
	Location: _____		Location: _____		
	Name: _____		Name: _____		
	Contact Info: _____		Contact Info: _____		

Copyright © 2019 Santa Clara County ARES/RACES. All rights reserved. 101

101


Recommended Routing Cheat Sheet (cont.)

- Provides recommended routing based on agency input
- Handling may be conditional upon other fields in form
- To Location may be conditional upon activation status
- ICS Unit > Branch > Section are identified to cover different staffing levels

Form Type	Handling	To Location	To ICS Position
General EOC			
ICS-213 Message Form	If "Severity" is: Then "Handling" is: Emergency Immediate (ASAP) Urgent Priority (<1 hr) Other Routine (<2 hr)	Author defined	Author defined
EOC-213RR Resource Request	If "Priority" is: Then "Handling" is: Now Immediate (ASAP) High (0-4 hrs) Immediate (ASAP) Medium (5-12 hrs) Priority (<1 hr) Low (24+ hrs) Routine (<2 hr)	County EOC	Planning Section
DA Municipal Status	Immediate (ASAP)	County EOC	Situation Analysis Unit Else: Planning Section
DA Shelter Status	Priority (<1 hr)	For city-managed: City EOC For county-managed: County EOC	Mass Care & Shelter Unit Else: Care and Shelter Branch Else: Operations Section

Copyright © 2019 Santa Clara County ARES/RACES. All rights reserved. 102

102



Voice Procedures

Copyright © 2019 Santa Clara County ARES/RACES. All rights reserved. 103

103

The “[Broken] Telephone Game”


- Actual conference call during a functional exercise
 - Message: how to look up status of open resource requests
 - Message contents: URL, username, password, role
 - Includes: symbols, upper/lowercase
- High quality conference bridge; no problem hearing
- But, receiving party was unable to successfully copy

Copyright © 2019 Santa Clara County ARES/RACES. All rights reserved. 104

104

A Common Procedure Is Essential

(Pick a Procedure. Any Procedure. Then Stick To It!)



- Which one you pick doesn't really matter
- But everyone must use the same procedure or:
 - Delays
 - Problems

Copyright © 2019 Santa Clara County ARES/RACES. All rights reserved. 105

105

We Start With ARRL NTS Procedures

- Most widely used procedure for amateur radio msg passing
- Defines use of ITU Phonetics:
 - Letters: O = "OSS-cah"; P = "pah-PAH"; Q = keh-BECK; ...
 - Numbers: 3 = "tree"; 5 = "fife"; 9 = "niner"; ...
- Defines use of Prowords
 - Control: Roger, Break, Stand By, Continue, ...
 - Clarification: I Spell, I Say Again
 - Introductory: Figure(s), Mixed Group, Internet Address, ...
- But ...
 - Only covers about 80% of what we need for 3rd party messages
 - The remaining 20% are very significant gaps

Copyright © 2019 Santa Clara County ARES/RACES. All rights reserved. 106

106

ARRL NTS Radiograms vs. 3rd Party Written Msgs

- They don't match how 3rd parties write messages
 - "X" to indicate a period. "QUERY" for a question mark.
 - Assumes all uppercase. Rules do not account for mixed case.
 - Rules do not account for: punctuation, symbols, formatting, ...

Copyright © 2019 Santa Clara County ARES/RACES. All rights reserved. 107

107

Our Message Handling Procedures

- Uses ARRL NTS procedures except when they ...
 - Don't match how 3rd parties write
 - Punctuation, mixed case, ...
 - Don't address 3rd party content
 - Mixed case, symbols, format, ...
- Added rules are similar to NTS
 - "symbol(s)" vs. "figure(s)"
 - "mixed group symbol(s)" vs. "mixed group figure(s)"
- Lots of examples
- Work in progress

Santa Clara County ARES/RACES
Message Handling Procedures
Revised: 15 Nov 2019 @ 10:00

Contents

- Introduction 3
- Message Passing Terminology 4
- Message Passing Rules 4
- Operator-to-Operator Messages 4
- 3rd Party Messages 4
- 3rd Party Messages to NTS Procedures 4
- Number and Spelling 4
- Standard ITU Phonetics 7
- Letters 7
- Numbers 7
- Special Characters 8
- Message Passing Procedures 10
- Control Procedures 10
- MESSAGE NUMBER 11
- ROGER 11
- BREAK 11
- STAND BY 11
- CONTROL or I/O 11
- MESSAGE 12
- MESSAGE END or END OF MESSAGE 12
- NET ADDRESS or SPELL PHONETICALLY 12
- Clarification Procedures 13
- USING 13
- ISAY AGAIN 13

Page 3 of 31

Copyright © 2019 Santa Clara County ARES/RACES. All rights reserved. 108

108

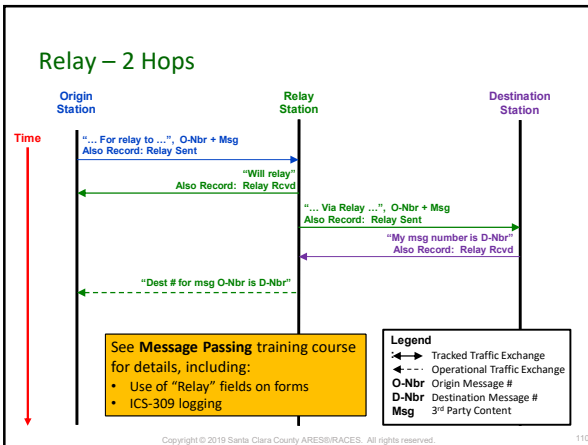


Relaying Messages

We now have a procedure and data fields to handle relaying any number of hops

Copyright © 2019 Santa Clara County ARES/RACES. All rights reserved. 109

109



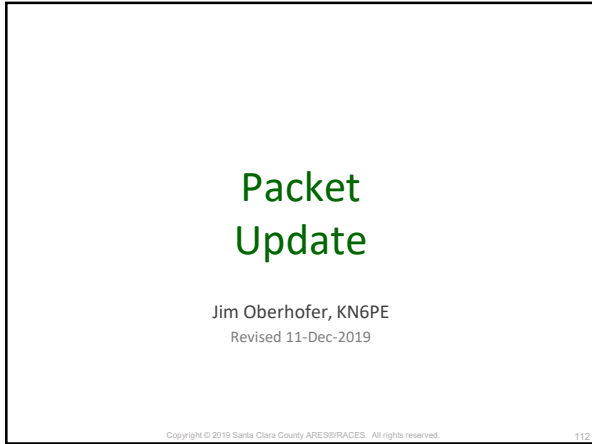
110

Message Passing Training

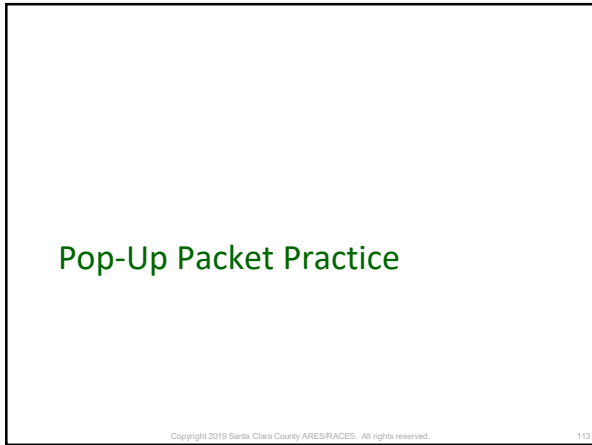
- The data is clear: our training works
 - Those who actively participate in our training do well
 - Others ... not so much!
- Message Passing Practice Net
 - Monthly, with live feedback
- Message Passing Classroom
 - Interactive; lots of examples
- New in 2020: Message Passing Pop-up Practice

Copyright © 2019 Santa Clara County ARES/RACES. All rights reserved. 111

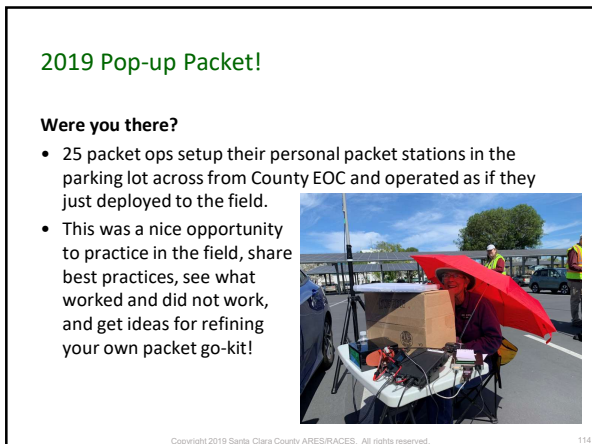
111



112



113



114



115



116



117

Weekly Packet "Practice"

2019... by the numbers (through 3-Dec-2019)

	Monday	Tuesday	'19 ttl	'18 ttl	Chg
Total Practice Messages sent	1230	1614	2844	2116	+34%
% Practice Messages sent	43.2%	56.8%	100.0%		
% Correct all the time	94.1%	93.3%	93.7%	93.2%	+0.5%
Average # of Participants / Night	25	33	29	25.5	+13%

Copyright 2019 Santa Clara County ARES/RACES. All rights reserved. 118

118

Weekly Packet "Practice"

- See the "Standard Packet Check-In/Out Message" App Note under...
<https://www.scc-ares-races.org/data/packet/index.html#app-notes>
- See the Practice Message, Subject section under...
<https://www.scc-ares-races.org/data/packet/weekly-packet-practice.html#Message>

Copyright 2019 Santa Clara County ARES/RACES. All rights reserved. 119

119


Outpost & PacketForms

Review

Copyright 2019 Santa Clara County ARES/RACES. All rights reserved. 120

120

What's in the box?



SCCo Integrated Packet Installer:

- Outpost Packet Message Manager
 - GUI-based interface for managing packet communications
 - Makes using packet as simple as using e-mail
- PacFORMS
 - HTML-based forms for use with Outpost
 - Since 2007, simplified forms-based data entry, reduced network bandwidth
- PackItForms
 - Next generation HTML-based forms for use with Outpost
 - Started in Los Altos; expanded to all county forms

Copyright © 2019 Santa Clara County ARES/RACES. All rights reserved. 121

121

What's new with Outpost

Copyright © 2019 Santa Clara County ARES/RACES. All rights reserved. 122

122

Outpost v3.3 c065
SCCo Installer v145C – July 2019

By the numbers	These were related to
<ul style="list-style-type: none"> • 3 New Features • 26 Defects • 27 Enhancements • 47 SCCo Submitted • 56 Total changes 	<ul style="list-style-type: none"> • 17 – Add-on/API • 8 - Message Handling • 6 – Send/Receive • 5 – Scripting • 3 – Printing • ... plus another 17 various changes

See the details up on the SCCo ARES/RACES website...
<https://www.scc-ares-races.org/data/packet/client-software.html>

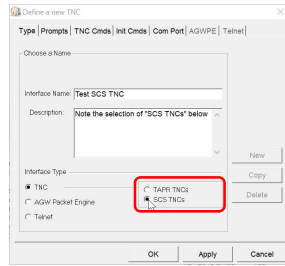
Copyright © 2019 Santa Clara County ARES/RACES. All rights reserved. 123

123

5. Support for SCS Tracker DSP TNC

Setup > Interface

- SCS TNCs behave differently than TNCs that use the TAPR standard (Kantronics, Timewave, MFJ, ...)
 - They are also about 1.5x as expensive!
- Outpost can now support the SCS Tracker / DSP TNC
- Helps ensure Outpost is usable no matter what TNC is in use

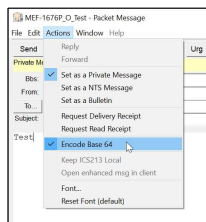


Copyright 2019 Santa Clara County ARES/RACES. All rights reserved. 124

124

4. Base64 Encode/Decode

- Initial encode/decode implementation
 - Action > Encode Base64
- Outpost will
 - Encode before sending to, decode after receiving from BBS
 - Displays sent or received message to user as plain text
 - Approximately 33% increase in message size!
- Current Usage
 - Preserve non-printable and other characters that would not normally be useable in a packet system
 - Prevent unintended "newlines" inserted by BBS
 - Add-ons can request encoding/decoding via API
- Future:
 - Part of workflow to handle more complex message types



Copyright 2019 Santa Clara County ARES/RACES. All rights reserved. 125

125

3. JNOS MD5 Authentication for Telnet

- TNC uses AX.25 (packet) protocol
 - Only call sign is used to connect to BBS
 - All transmissions are in clear text; easily intercepted by someone listening
- If TCP/IP network is available, Outpost can use Telnet protocol
 - Same BBS commands as TNC/Radio, but network speed is usually faster
 - Telnet logins require passwords
 - login: w6xr14
 - Password:
 - Telnet uses clear text, including the password
 - Exposing passwords might give bad actor a clue about other passwords you use
 - Can be snooped locally, but county WiFi backbone uses encryption

Copyright 2019 Santa Clara County ARES/RACES. All rights reserved. 126

126

3. JNOS MD5 Authentication for Telnet

- MD5 Authentication is now automatic in Outpost
 - No security for message data; but helps avoid snooping on passwords
 - Not encryption; does not “obscure meaning” [47 CFR § 97.113(a)(4)]
 - Server (JNOS) and client (Outpost) have a shared secret: user’s password
 - Server (JNOS) sends a “challenge” along with password prompt
 - **login:** w6xr14
 - **Password [5cbe627b] :**
 - Client (Outpost) calculates and sends response (not password) in clear text
 - Server (JNOS) determines if response is correct; if so, user is connected
 - A new challenge is calculated at each login

Copyright 2019 Santa Clara County ARES/RACES. All rights reserved. 127

127

2. New Subject Line Format

- Implements new Subject Line format:
 - <MsgNbr>_<H>_<Subject>
 - where <H> is the handling order: I, P, R (Immediate, Priority, Routine)
- Red font and “!!” Urgent marker if Handling Order = Immediate
 - Previously, red emphasis was based on Severity field

In Tray	Type	From	To	BBS	Local ID	Subject	Date/Time	Size
1	rdmef@..._NBAEP	NBAEP	NBAEP-3	MEF-1482P	MEF-1482P_I_MunStat_Santa Clara		4/10/2019 16:51	4,331
2	rdmef@..._rdmef@rdm...	NBAEP-3			DEU-08480-DEF-1490P_I_MunStat_Santa Clara		4/10/2019 16:51	133

Copyright 2019 Santa Clara County ARES/RACES. All rights reserved. 128

128

1. Improvements/Expansion of API

(Application Program Interface)

```

    graph TD
        subgraph Expanded_functionality [Expanded functionality]
            PacFORMS
            Alt911
            PackitForms
            Outpost_Add_On_API[Outpost Add-On API]
        end
        Outpost_Add_On_API --- Outpost
    
```

- Speed improvements (submit) and greatly expanded functionality
- New Edit before sending workflow:
 - Submit to Outpost > Re-open form > Edit > Re-Submit to Outpost > Send

Copyright 2019 Santa Clara County ARES/RACES. All rights reserved. 129

129

PackItForms
Next Generation Form Handling

Copyright © 2019 Santa Clara County ARES/RACES. All rights reserved. 130

130



PackItForms

- Next generation of forms for packet radio transmission
 - Keith Amidon, KJ6PUO
 - Peter Amidon, KJ6PUN
 - John Kristian, W6JMK
- Consistent with
 - Agency forms + Radio Routing Slip
 - New PDF forms
- Includes same routing fields
 - Same position
 - Same required fields

Copyright © 2019 Santa Clara County ARES/RACES. All rights reserved. 131

131



Outpost Forms Menu

- For backward compatibility both PackItForms and PacFORMS are included
- Shown: Installer with Hospital and RACES Mutual Aid forms
- PackItForms (highlighted here in red)
- PacFORMS (highlighted here in purple)
- Public installer does not contain (shown shaded)
 - Medical/Healthcare forms
 - RACES Mutual Aid forms

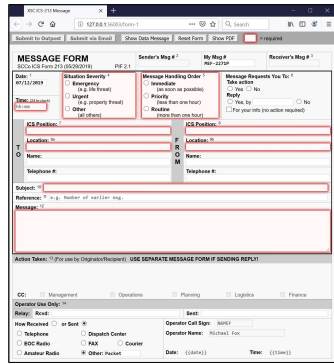
Copyright © 2019 Santa Clara County ARES/RACES. All rights reserved. 132

132



10. Required Field Indication

- Required fields are shown with red highlighting
 - Disappears when valid data is entered into each field
 - Easy to tell what fields need to be filled in
- As long as at least one required field is not filled:
 - Submit buttons are disabled
 - Button bar at top is grey



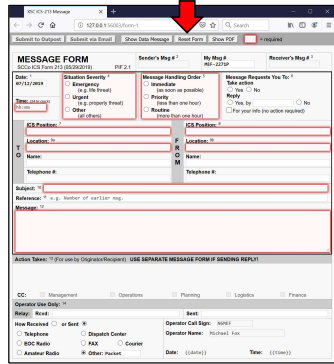
Copyright 2019 Santa Clara County ARES/RACES. All rights reserved. 133

133



9. Reset Form Button

- Resets form to default values
- Use to "start over" without losing message number and other default values, such as date



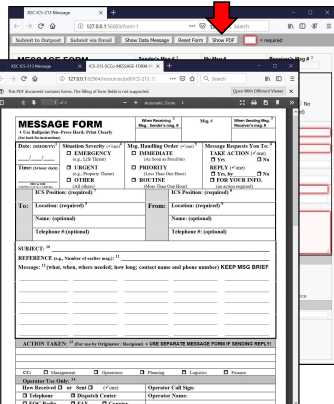
Copyright 2019 Santa Clara County ARES/RACES. All rights reserved. 134

134



8. Show PDF

- Opens another browser tab
- Displays PDF version of form
 - Can be opened and printed



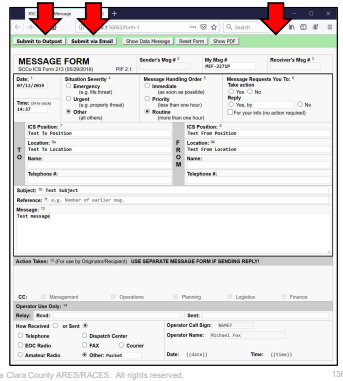
Copyright 2019 Santa Clara County ARES/RACES. All rights reserved. 135

135



7. Ready to Submit Indication

- Button bar at top turns green when all required fields contain valid data
- Submit buttons enabled
 - Submit to Outpost
 - Submit via Email



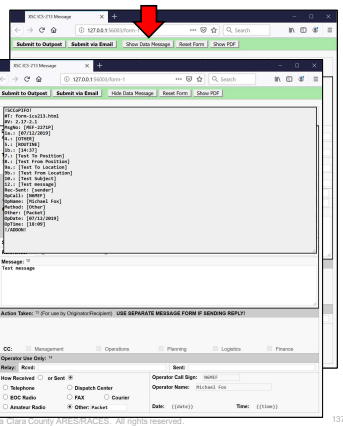
Copyright 2019 Santa Clara County ARES/RACES. All rights reserved.

136



6. Show/Hide Data Message

- Show Data Message
 - Changes to “Hide Data Message” when pressed
 - Displays the text message that will be submitted to Outpost or E-mail
 - Could also be used to copy to some other application
- Hide Data Message
 - Removes the overlay text window



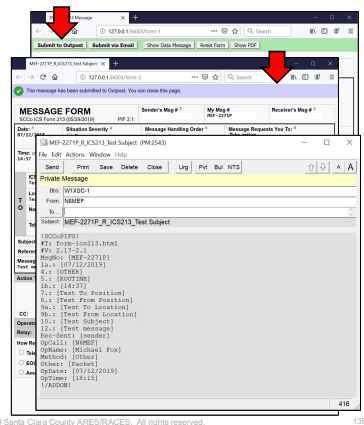
Copyright 2019 Santa Clara County ARES/RACES. All rights reserved.

137



5. Submit to Outpost

- Sends form data to Outpost
- Purple confirmation banner
 - Message successfully submitted
- Outpost displays text message window
- Ready for To: address



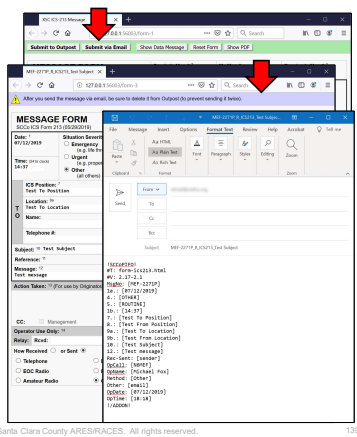
Copyright 2019 Santa Clara County ARES/RACES. All rights reserved.

138



4. Submit via E-mail

- Purple confirmation banner
 - Includes warning to delete message from Outpost to avoid sending a duplicate
- Launches default e-mail app as defined in MS Windows
- Subject and body are filled in
- Be sure to set Plain Text mode!



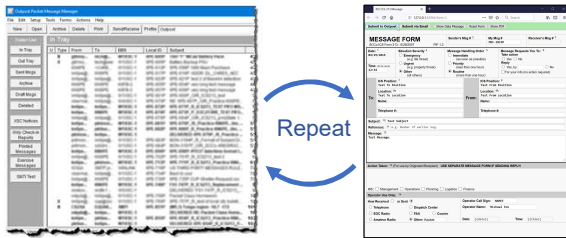
Copyright 2019 Santa Clara County ARES/RACES. All rights reserved.

139



3. Updating a Previously Submitted Form

- Outpost & PackItForms supports reopening, editing, and resubmitting a previously submitted form



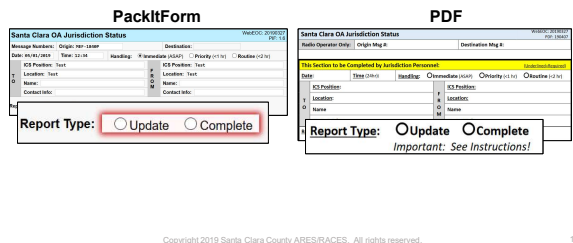
Copyright 2019 Santa Clara County ARES/RACES. All rights reserved.

140



2. Update vs. Complete Report

- Some forms have a "Report Type" option
 - Municipal Status, Shelter Status, Medical Facility Status, Allied Health Status



Copyright 2019 Santa Clara County ARES/RACES. All rights reserved.

141



For More Information

- Support
 - See the Santa Clara County ARES/RACES web site packet page
 - <https://www.scc-ares-races.org/data/packet/index.html>
 - Join the packet discussion group
- Practice
 - Send a message during the weekly packet net, either or both days
 - <https://www.scc-ares-races.org/data/packet/weekly-packet-practice.html>
 - Automated feedback to help you improve, verify you've got it right
 - Participate as a packet operator at drills and other events

Copyright © 2019 Santa Clara County ARES/RACES. All rights reserved. 145

145

Network Update

Michael Fox, N6MEF
Revised 11-Dec-2019

Copyright © 2019 Santa Clara County ARES/RACES. All rights reserved. 146

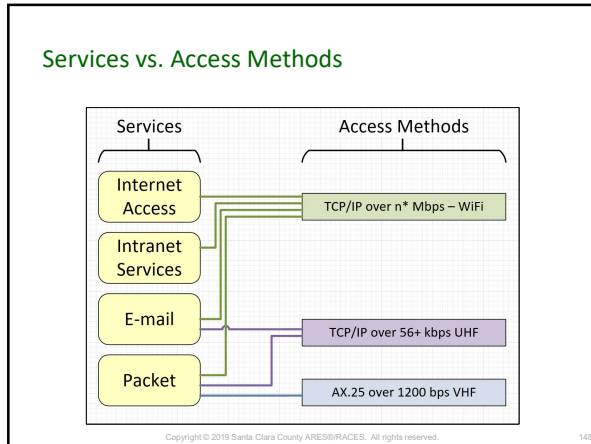
146

Services **Zero service outages since 2009!**

- Packet BBS (Bulletin Board System)
 - Four standard packet BBSs (JNOS), support standard packet access
 - Bi-directional e-mail gateway
- E-mail
 - Four standard e-mail servers, support standard POP/SMTP clients
- Intranet
 - Multi-megabit connectivity between jurisdictions/agencies
- Internet
 - Four independent gateways to the public Internet

Copyright © 2019 Santa Clara County ARES/RACES. All rights reserved. 147

147



148

UHF TCP/IP Radio Status

- Bench testing showed promise
 - Able to handle extra "chattiness" of Internet e-mail
 - Could handle attachments up to 1 MB
 - Significant middle step for those without line of sight for WiFi
- Field testing was not successful
 - First vendor did not have the technology to support different signal strengths on a single channel
 - Picking least common denominator speed is bad for most sites
 - Second vendor could not sustain modulation rate at 50 kHz channels
 - Field SEs came out and duplicated bad results; no explanation
- One more vendor to try (that we know of)

Copyright © 2019 Santa Clara County ARES/RACES. All rights reserved.

149

WiFi Deployment Status

- WiFi access points installed at San Jose (W1XSC) and Palo Alto (W3XSC)
- San Jose access points will cover most hospitals and some cities
- By the end of this year, recommended configurations to all hospitals and those cities that have submitted connection requests

<https://www.scc-ares-races.org/data/access/tcpip-wifi/tcpip-wifi-access.html>

Copyright © 2019 Santa Clara County ARES/RACES. All rights reserved.

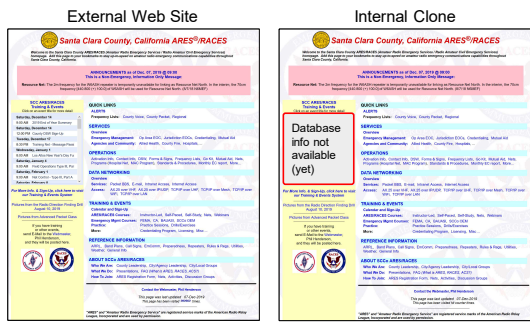
150

Intranet Services

- Jurisdictions / agencies can create services and make them available to others within the network
 - Web sites
 - File sharing servers
 - Applications
 - ...
- Services that become popular, benefit most/all subscribers, and are supported, may be moved to the network core

151

Example Intranet Service: Clone of SCo ARES/RACES Website



152

For more info:

<https://www.scc-ares-races.org/data>

Join our discussion groups: packet, email, tcpip, mesh

153

**Disaster Service Worker
Volunteer Program**

Michael Fox, N6MEF
Revised 11-Dec-2019

Copyright © 2019 Santa Clara County ARES/RACES. All rights reserved. 154

154

Disaster Service Worker (DSW) Volunteer

“... any natural person registered by an accredited Disaster Council ... for the purpose of engaging in disaster service ... without pay or other consideration.”

Copyright © 2019 Santa Clara County ARES/RACES. All rights reserved. 155

155

What's In It For You?

- Workers Compensation coverage by State Compensation Insurance Fund
 - ... but it's not a windfall; have your own insurance
- Limited liability protection when acting within scope of assignment and training
 - ... but we're not lawyers and this is not legal advice
- Many activities require it in order to participate

Copyright © 2019 Santa Clara County ARES/RACES. All rights reserved. 156

156

When am I covered as a DSW Volunteer?

- When **registered** ...
- ... and when **activated** and assigned by an **accredited authority** ...
- ... and while performing your duties
 - ... according to approved **training** plan
 - ... while under **supervision**

Copyright © 2019 Santa Clara County ARES/RACES. All rights reserved. 157

157

The Two Most Common Questions

- *I registered for DSW with a different organization (CERT, animal rescue, fire, ...). Does that cover me with your group?*
 - No. You must be registered with the proper classification. In our case: "Communications"
- *I registered for DSW in a different jurisdiction. Does that cover me with your group?*
 - No. Only the jurisdiction that registered you can activate you. (County DSWs can be activated by the county and assigned to a local jurisdiction for mutual aid support.)

Copyright © 2019 Santa Clara County ARES/RACES. All rights reserved. 158

158

DSW for Amateur Radio Operators

- Get registered
 - With your local jurisdiction
 - With the county (for county events and mutual aid)
- Attend training
- Accept only assignments that you're trained to do
- Wait for proper activation
- Perform assignments according to training
- Stay in contact with net control at all times
- If injured: notify supervisor immediately

Copyright © 2019 Santa Clara County ARES/RACES. All rights reserved. 159

159

DSW for Amateur Radio Leaders

Same as DSW for Amateur Radio Operators, plus ...

- Know how the program works
- Maintain registration information properly
- Define a training plan; get it approved
 - Training events require pre-approval for coverage
- Know the claims procedure before your event
 - Bring the proper forms with you to the event
- Review with jurisdiction’s Emergency Manager

Copyright © 2019 Santa Clara County ARES/RACES. All rights reserved. 160

160

For more info:

<https://www.scc-ares-races.org/dsw>

Copyright © 2019 Santa Clara County ARES/RACES. All rights reserved. 161

161

Credentialing Program Update

Michael Fox, N6MEF
Revised 11-Dec-2019

Copyright © 2019 Santa Clara County ARES/RACES. All rights reserved. 162

162

Environment and Purpose of Credentialing

- Credentialing in technical fields (usually called certification) has been used for 20+ years to verify an individual's ability
- SCCo ARES/RACES has had a credentialing program for Mutual Aid Communicators since 2009
- Credentialing is becoming more prevalent in Emergency Management, especially where mutual aid may be utilized
- The State of California has a credentialing program for EOC positions
- Served agencies are increasingly aware of credentialing and are expecting to build credentialed teams
- We can better support our served agencies by expanding our credentialing program to all operators (not just MACs)

Copyright © 2019 Santa Clara County ARES/RACES. All rights reserved. 163

163

Comparison of MAC Program Design vs. new State of CA EOC Credentialing

	State of CA	SCCo Credentialing Program
Started	Recently	2009 (MAC Program)
Roles	46 EOC positions	Field, Net Control, Packet, Shadow, HF*
Types	III, II, I	V, IV, III, II, I
ICS/SEMS Training	Yes	Yes
Position-specific training	Yes	Yes
Knowledge testing	Yes	Yes
Experience required	Yes	Yes
Performance evaluation	Yes	Yes
Time-bounded	Yes	Yes
Recertification	Yes	Yes

* HF Credential is TBD

Copyright © 2019 Santa Clara County ARES/RACES. All rights reserved. 164

164

Before: SCCo ARES/RACES MAC Qualifications

Resource	Field Comms	Net Control	Packet	Shadow	HF (future)
Type I	Field Comm I	Net Control I	Packet I	Shadow I	HF I
Type II	Field Comm II	Net Control II	Packet II	Shadow II	HF II
Type III	Field Comm III	Net Control III	Packet III	Shadow III	HF III
Type IV	Mutual Aid Communicator				
Type V	Licensed Amateur Radio Operator w/DSW (no credential)				

Copyright © 2019 Santa Clara County ARES/RACES. All rights reserved. 165

165

After:
SCCo ARES/RACES Technical Credentials

Resource	Field Comms	Net Control	Packet	Shadow	HF (future)
Type I	Field Comm I	Net Control I	Packet I	Shadow I	HF I
Type II	Field Comm II	Net Control II	Packet II	Shadow II	HF II
Type III	Field Comm III	Net Control III	Packet III	Shadow III	HF III
Type IV	Type IV Communicator				
Type V	Licensed Amateur Radio Operator w/DSW (no credential)				

Copyright © 2019 Santa Clara County ARES/RACES. All rights reserved. 166

166

Comparison of Capabilities by Credential Type

Capability	Type V	Type IV	Type III	Type II
Equipped for up to 12 Hr shift	Unknown	Yes	Yes	Yes
Respond anywhere in jurisdiction	Unknown	Yes	Yes	Yes
Basic Net Usage Procedures	Unknown	Yes	Yes	Yes
Simple Damage/status reports	Unknown	Yes	Yes	Yes
Handle low traffic levels	Unknown	Yes	Yes	Yes
3 rd Party Traffic	Unknown	Unknown	Yes	Yes
Low-to-medium traffic levels	Unknown	Unknown	Yes	Yes
Manage problems	Unknown	Unknown	Yes	Yes
Equipped w/ mobile radio, ant	Unknown	Unknown	Unknown	Yes
Two Nets, Cross band	Unknown	Unknown	Unknown	Yes
Medium-to-high traffic levels	Unknown	Unknown	Unknown	Yes

Copyright © 2019 Santa Clara County ARES/RACES. All rights reserved. 167

167


Comparison of Assignments by Credential Type

Assignments	Type V	Type IV	Type III	Type II
Basic Net Usage, Status Reports <ul style="list-style-type: none"> Parades, festivals, races Checkpoints, flood watch Damage surveys CERT team support (simple rpts) 	Unknown	Yes	Yes	Yes
3 rd Party Traffic (Low/Med) <ul style="list-style-type: none"> CERT team support (complex rpts) Schools, shelters Jurisdiction EOC (smaller) Hospitals Allied health facilities Fire stations 	Unknown	Unknown	Yes	Yes
3 rd Party Traffic (Med/High), 2 nets <ul style="list-style-type: none"> Med Health Joint Ops Ctr (MHJOC) Jurisdiction EOC (larger) County EOC 	Unknown	Unknown	Unknown	Yes

Copyright © 2019 Santa Clara County ARES/RACES. All rights reserved. 168

168

Advancement Timelines



- Progress at your own pace
- Most people will be able to achieve the following
 - First year: Type IV
 - Second year: At least one Type III
 - Third year: Another Type III and/or Type II
 - Fourth year: Another Type III and/or Type II and/or Type I
- In fact, most **active** amateur radio operators have already completed 90% of the Type IV credential!

Copyright © 2019 Santa Clara County ARES/RACES. All rights reserved. 169

169

Agency-specific Endorsements

Builds on minimum technical credentials
Adds agency-specific requirements

Copyright © 2019 Santa Clara County ARES/RACES. All rights reserved. 170

170

Purpose

- Served agencies rely on us to send them resources who are technically capable of supporting their needs
- These agencies may also have their own, additional requirements for operating within their facilities
 - Training (such as agency- or facility-specific procedures)
 - Administrative (such as security)
 - ... other
- Endorsements identify resources that have the required RACES credentials ***AND*** meet the additional, agency-specific requirements

Copyright © 2019 Santa Clara County ARES/RACES. All rights reserved. 171

171

Agency-specific Endorsements

- **Mutual Aid Communicator**
 - Type IV Communicator, plus ...
 - Background check (County Sheriff)
 - Agree to deploy outside home city
 - (Note: Existing MACs will be converted)

- **County Fire Station Radio Operator**
 - Field Type III and Packet Type III (County ARES/RACES)
 - Background check (County Sheriff)
 - Additional fire station operations training (County Fire)

Copyright © 2019 Santa Clara County ARES/RACES. All rights reserved. 172

172

Agency-specific Endorsements

- **County EOC Radio Operator**
 - Net Control Type III or Packet Type III
 - Additional training
 - Background check (County Sheriff)

- **County EOC RACES Unit Leader**
 - County EOC Radio Operator, plus ...
 - Net Control Type II and Packet Type II
 - "Core 100" Emergency Management training
 - Same training required of employees working in county EOC

Copyright © 2019 Santa Clara County ARES/RACES. All rights reserved. 173

173

Credentialing Program

(<https://www.scc-ares-races.org/credentials>)

Santa Clara County, California ARES®/RACES

ANNOUNCEMENTS as of Dec. 07, 2019 @ 09:00
This is a Non-Emergency, Information Only Message.

Rescue Net: The 2nd frequency for the WISCHF repeater is temporarily unavailable for using as Rescue Net North. (971.8.4362F)

SEC ARES/RACES Training & Events

QUICK LINKS

ALERTS

SERVICES

OPERATIONS

DATA NETWORKING

TRAINING & EVENTS

Santa Clara County ARES®/RACES

Home | Services | Operations | Data | Training & Events | Resources | About | December 9, 2019

Credentialing Program

Overview

Help Center: Santa Clara County ARES/RACES has implemented a credentialing program for Mutual Aid Communications (EMCOM) units. This program will ensure all units are properly trained and certified. Units are required to complete the program before they will be able to participate in any EMCOM unit. The program is available to all units. For more information, please contact the program manager.

Created on: 12/03/2019 10:00:00 AM

Program Handbook

The handbook program manual outlines the program, how to enroll, and the details about enrollment. The Program Handbook is available at: [Program Handbook](#)

Enrollment

• All units are required to complete enrollment within 60 days.

• All units are required to complete enrollment within 60 days.

• All units are required to complete enrollment within 60 days.

Performance Standards

All units are required to complete enrollment within 60 days. The program will ensure all units are properly trained and certified. Units are required to complete the program before they will be able to participate in any EMCOM unit. The program is available to all units. For more information, please contact the program manager.

Forms

Guidelines for candidates and administrators can be found at: [Program Handbook](#)

Credentialing Program Record Form (DRAFT)

Unit Name	Approved	Recorded	Completed	Waiting for Approval
Unit 1	Yes	Yes	Yes	Yes
Unit 2	Yes	Yes	Yes	Yes
Unit 3	Yes	Yes	Yes	Yes
Unit 4	Yes	Yes	Yes	Yes
Unit 5	Yes	Yes	Yes	Yes
Unit 6	Yes	Yes	Yes	Yes

Copyright © 2019 Santa Clara County ARES/RACES. All rights reserved. 174

174

"My Credentials" (Personal achievement record)

County Credentials

Evaluator	Field	HF	Net Control	Packet	Shadow
H1	H1	H1	H1	H1	H1
H2	H2	H2	H2	H2	H2
H3	H3	H3	H3	H3	H3

County Endorsements

County Fire	County EOC	Unit Leader
MAC	FRQ	RUL

Herman Munster W6XRL4
Santa Clara County ARES/RACES

Credentials:

Evaluator	E2
Field Comms	F1
HF Comms	H2
Net Control	H3
Packet Comms	P2
Shadow Comms	S1

Endorsements:

Mutual Aid Comm	MAC
Fire Station Radio Oper	FRQ
EOC Radio Operator	ERO
EOC RACES Unit Lead	RUL

Expires: Jan 31, 2020

175

Program Roll-out

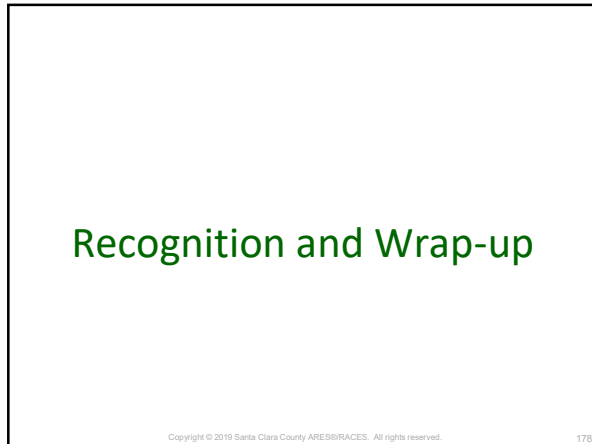
- First Type IV credential records already submitted!
- Currently finishing up work on the tracking database
 - Thanks to Jim Clark, N6JRC, in Los Altos
- Go Live anticipated by January 1

176

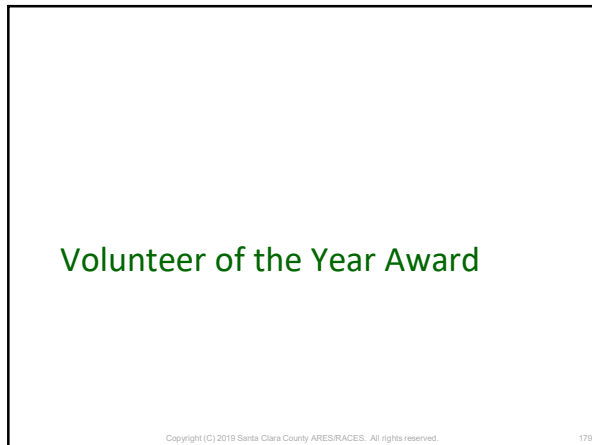
For more info:

<https://www.scc-ares-races.org/credentials>

177



178



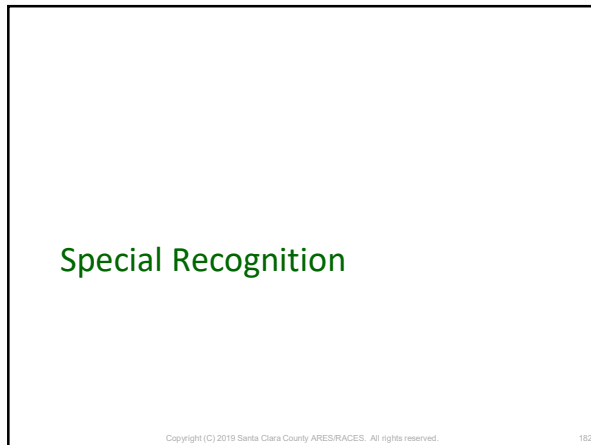
179



180



181



182



183

Help Tell Our Story

Help your Emergency Management team and other agencies understand what we can do for them

Copyright (C) 2019 Santa Clara County ARES/RACES. All rights reserved. 184

184

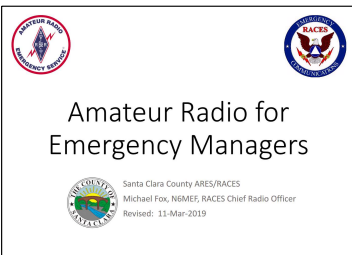
What We Know Doesn't Matter!

- Let's say your house is on fire
 - Do you want someone who can put on turnout gear, drive a truck, connect hoses, and operate ladders?
 - No. You want someone who can put out the fire!
- Avoid focusing on the underlying tasks & technologies
 - Requires served agency to guess how you can help them
 - If they aren't radio operators, they may not figure it out
- Focus your message on what we can do for them (the agency)
 - Solve a problem that THEY have
 - On THEIR terms, within THEIR workflow, using THEIR terminology

Copyright (C) 2019 Santa Clara County ARES/RACES. All rights reserved. 185

185

**Last Year:
Amateur Radio for Emergency Managers**



Amateur Radio for
Emergency Managers

Santa Clara County ARES/RACES
Michael Fox, N1MZF, RACES Chief Radio Officer
Revised: 11-Mar-2019

Focuses on what we can do for our served agencies

Copyright (C) 2019 Santa Clara County ARES/RACES. All rights reserved. 186

186

Additional Ideas

- Intergovernmental Advisory Committee to the FCC issued several Advisory Recommendations on Nov 7, 2019
 - <https://www.fcc.gov/document/fcc-issues-advisory-committee-public-safety-and-telehealth-reports>
- Two of the recommendations identify amateur radio as a key resource:
 - Multilingual Alerts Report (2019-5)
 - Disaster Resiliency Report (2019-3)
- From the recommendations ...

Copyright (C) 2019 Santa Clara County ARES/RACES. All rights reserved. 187

187

IAC to FCC: Amateur (ham) Radio Capability

- Available for emergency communications support to any public service agency; bridge interoperability gaps
- Deploy to a wide variety of locations:
 - Auxiliary command posts, emergency operations centers, emergency shelters, evacuation sites, fire stations, medical facilities, mobile disaster vehicles, police stations, public works sites, and volunteer intake centers
- Create communications links between similar agencies across political boundaries
- Establish comm outside the existing coverage areas of public service, commercial systems

Copyright (C) 2019 Santa Clara County ARES/RACES. All rights reserved. 188

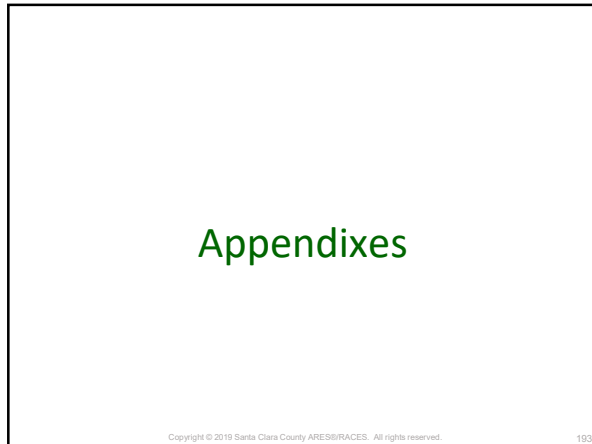
188

IAC to FCC: Amateur (ham) Radio Capability (2)

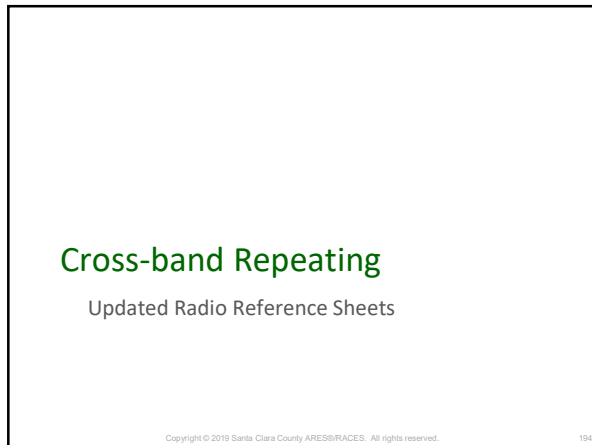
- “Shadow” critical public officials, emergency mgmt personnel
- Monitor crucial infrastructure; provide periodic reports
- Provide periodic situation reports from observation posts
- Identify which hospitals have the available capacity to accept injured after an event
- Provide continuing communication support through ham radio after an event
 - After damage is done, and there is still no power or phone service, ham radio operators have provided on-going coordination of delivery of water and food to the survivors for weeks, as well as providing communications to families outside the disaster area.

Copyright (C) 2019 Santa Clara County ARES/RACES. All rights reserved. 189

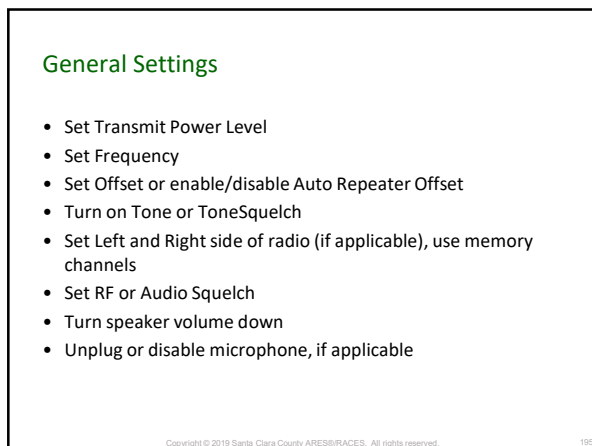
189



193



194



195

Kenwood TM-D710 and TM-V71A

- Instructions in PDF on Disk
 - Cross-band (K Type)-E.PDF
- Multiple Menu Modes
 - Menu Mode 403 for Cross-band
 - Menu Mode 404 for TX HOLD
 - Menu Mode 406 for TX ID
 - Menu Mode 405 for entering Repeater ID
- In Cross-band mode, 3 min TX timer is locked on.
- Turning off does not cancel Cross-band
- Must turn off and press [Tone] + Power on to reset
- auto-ID function
(instructions verified by Steve KC6RSC)

Copyright © 2019 Santa Clara County ARES/RACES. All rights reserved. 196

196

Icom IC-2730H

- Instructions from county drill by Neil K2LL, see details on addendum sheet
 - <http://icom.custhelp.com/cgi/attach/get/2822/0/filename/IC-2730-Cross-Band+Repeat+Addendum.pdf>
- Exclusive operation: enable cross-band features, then turn on and off. Once enabled cross-band will stay enabled until radio is reset.
- To enable
 - Power off, press both "main band" and "mon" plus power on. If successful the EXMENU > OTHERS > RPT M menu will be enabled.
 - Recommended to turn on time-out timer (TOT) to 3 minutes or less
- To turn on
 - set left and right sides of the radio to be the two different channels. Ensure they are on different bands.
 - Menu > EXMENU > OTHERS > RPT M > START
 - Press the MW button
 - Rotate tuning knob to "YES", then press MW button again.
 - You will see "rpt" on both sides of the display
- To turn off
 - Press Menu. You will see "EXIT?". Rotate tuning knob to show "YES", then press MW button.
- "Locked Band" or "One Way":
 - This radio doesn't support one way cross-band repeating. To fake it, program the remote side to listen for a PL tone it won't receive.

Copyright © 2019 Santa Clara County ARES/RACES. All rights reserved. 197

197

Yaesu FTM-350R

- Disable APRS by turning the APRS modem OFF (Set E05)
- Set frequency and squelch for left and right, VHF/UHF
- To Activate
 - Turn OFF
 - Hold the button left of the yellow power button
 - Press Power button
 - Select Special Menu 11 XBAND-RPTR with left dial
 - Rotate left dial to ON, press left dial (radio will reboot itself)
- To disable,
 - Turn OFF
 - Hold the button left of the yellow power button
 - Press Power button
 - Select Special Menu 11 XBAND-RPTR with left dial
 - Rotate left dial to OFF, press left dial (radio will reboot itself)

Copyright © 2019 Santa Clara County ARES/RACES. All rights reserved. 198

198

Yaesu FTM-400DR/XRD/DE/XDE

- Disable APRS by turning the APRS modem OFF
- Set frequency and squelch for top and bottom
- Disconnect microphone, turn volume down
- To Activate
 - Turn OFF
 - Hold the DISP, F, and GM buttons
 - Hold Power button, release when radio turns on
 - X-Repeater message is displayed
- To disable,
 - Turn OFF
 - Hold the DISP, F, and GM buttons
 - Hold Power button, release when radio turns on
 - X-Repeater message is not displayed

Copyright © 2019 Santa Clara County ARES/RACES. All rights reserved. 199

199

Yaesu FT-8800

- First set up VHF* on Left and UHF* on Right
 - * Either band may be on either side
 - Freq, squelch type, squelch freq
 - Override repeater offset
- Press SET
 - Rotate main dial to menu 45 (X-RPT)
- Press main dial knob will show X-start
- Press main dial knob again to activate
- To exit press SET

Copyright © 2019 Santa Clara County ARES/RACES. All rights reserved. 200

200

Alinco DR-635 and DR-735

- (Instructions verified by Thomas KK6FPP)
- Details on http://www.alinco.com/pdf/tech/Tech/Crossband/dr635_XBN_D.pdf
- Turn the power on while holding the BAND key pressed.
- ★ and R icons appear on the screen. Repeat the same sequence to exit from the XBR mode.

Copyright © 2019 Santa Clara County ARES/RACES. All rights reserved. 201

201

Your Radio could be listed here

- Send e-mail describing verified procedure to Andreas Ott, K6OTT, <andreas@naund.org>

Copyright © 2019 Santa Clara County ARES/RACES. All rights reserved. 202

202

Intermod Calculations

Copyright © 2019 Santa Clara County ARES/RACES. All rights reserved. 203

203

IMD Concerns for Field Sites

- Primarily concerned with odd orders (non-linear effects)
 - Few other transmitters nearby
- Most important odd order is the 3rd order since it's magnitude will be largest
 - For each combination of f_1 and f_2 (omitting math here)
 - $2f_1-f_2, 2f_2-f_1$ are of concern
 - If a third signal is present
 - $f_1+f_2-f_3, f_1-f_2+f_3, f_2+f_3-f_1$ are of concern
 - Other combinations mostly out of band
- Next most important would be 5th order. After that, the amplitude is usually too low to matter.

Copyright © 2019 Santa Clara County ARES/RACES. All rights reserved. 204

204

IMD Concerns for Shared Sites, like EOCs

- Need to worry about both odd and even orders, since what's out of band for us may be in band for fire, police, cellular, satellite, etc.
 - Odd orders like a field site
 - For each combination of f_1 and f_2
 $2f_1 - f_2, 2f_2 - f_1$ are of concern
 - If a third signal is present
 $f_1 + f_2 - f_3, f_1 - f_2 + f_3, f_2 + f_3 - f_1$
 $(2f_1 - f_2), (2f_1 - f_3), (2f_2 - f_1), (2f_2 - f_3),$
 $(2f_3 - f_1), (2f_3 - f_2)$
are of concern
 - Even orders, too, because lots of services are involved
 - You may interfere with them
 $f_1 + f_2, 2f_1 + 2f_2, f_1 - f_2, 2f_1 - 2f_2$

Copyright © 2019 Santa Clara County ARES/RACES. All rights reserved. 205

205

Intermodulation Products: 2 Transmitters

- To simplify, ignore the $\cos()$ and focus on the frequency terms
- Calculating for two frequencies is simple (albeit tedious)
- For two transmitters, the four 3rd order products are:
 - $(2f_1 - f_2), (2f_2 - f_1), (2f_1 + f_2), (2f_2 + f_1)$
 - The first two are of most interest because they are near the two transmitters (and may land close to other nearby transmitters)
 - The last two are typically out of band
 - Won't affect our other transmitters
 - Could affect other radio services at a shared transmitter site if not filtered, but not so important for an isolated ham radio event

Copyright © 2019 Santa Clara County ARES/RACES. All rights reserved. 206

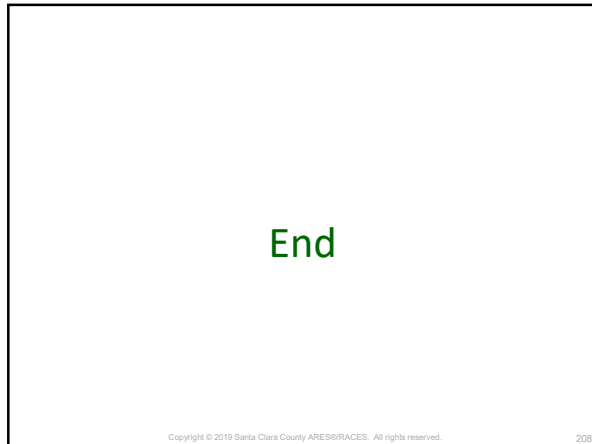
206

Intermodulation Products – 3 Transmitters

- For 3rd order: $|k_1| + |k_2| + |k_3| = 3$
- For three transmitters, the nine 3rd order products are:
 - $(f_1 + f_2 + f_3), (f_1 + f_2 - f_3), (f_2 + f_3 - f_1)$
 - $(2f_1 - f_2), (2f_1 - f_3), (2f_2 - f_1), (2f_2 - f_3), (2f_3 - f_1), (2f_3 - f_2)$
- Fun right?
- Now, imagine trying to calculate for the most common IMD issues:
 - 2-TX 3rd Order, 3-TX 3rd Order, 2-TX 5th Order
 - Check out intermod calculators
 - Search for online calculators and/or downloadable software
- Recommendation:
 - Whenever possible, calculate the 2-TX 3rd order products and avoid those frequencies: $(2f_1 - f_2), (2f_2 - f_1)$
 - Use an IMD calculator to select the best frequencies to use at an event

Copyright © 2019 Santa Clara County ARES/RACES. All rights reserved. 207

207



208
