

## USE AND DISTRIBUTION NOTICE

- Santa Clara County RACES authorization is granted to use and duplicate this material as-is as long as this page and the copyright notices on each page are included, acknowledging Santa Clara County ARES/RACES as the holder of the copyright.
- Permission is granted to adapt this presentation to your needs as long as you acknowledge our copyright and include a note similar to "adapted with permission from Santa Clara County ARES/RACES"
- For additional information on training or any of our programs send an email to: [info@scc-ares-races.org](mailto:info@scc-ares-races.org)

Copyright © 2024 Santa Clara County ARES®/RACES. All rights reserved.

1



# 2024 Year End Summary, Update, Preview



Santa Clara County ARES®/RACES  
Revised: 11-Dec-2024

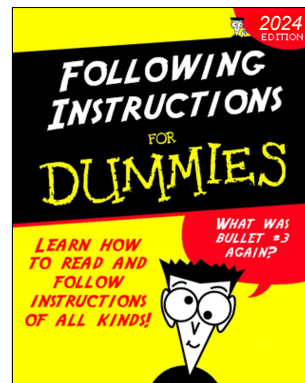
ARES and Amateur Radio Emergency Service are registered service marks of the American Radio Relay League Incorporated and are used by permission.

Copyright © 2024 Santa Clara County ARES®/RACES. All rights reserved.

2

## Housekeeping

- Introductions
- Pen/pencil, paper
- Cell phones
- Side conversations
- Questions
- Breaks
- Restrooms
- Do not park in side parking lot
- Do not wander around the building
- In case of emergency



Copyright © 2024 Santa Clara County ARES®/RACES. All rights reserved.

3

## Agenda

- Message Passing Skills
- Training
- ICS Forms
- Credential Updates
- Packet Network Update
- Monthly Packet Message Passing
- P1 and HF Credentials & SHARES
- Weekly Packet Practice
- Safety Issue Observed: no fuses in power cables
- Working with a Served Agency
- W2XSC BBS Failure



Copyright © 2024 Santa Clara County ARES®/RACES. All rights reserved.

4

# Message Passing Skills

## Can you send what the served agency needs?

Tim Howard, KE6TIM  
Revised 10-Dec-2024

Copyright © 2024 Santa Clara County ARES®/RACES. All rights reserved.

5

## Why is Message Passing Important

- Trained Amateur Radio Operators
  - Do more than push a PTT button.
  - Know how to get agency specific messages from Point A to Point B accurately and efficiently, even when other systems are failing.
- No matter how much experience you have, your skills become stale without practice.
- We encourage everyone to attend the training classes every few years.
- We all think we are good enough, but how good is good enough?
- Let's try some examples.
- No judgement, just some fun to see what we can do.


Copyright © 2024 Santa Clara County ARES®/RACES. All rights reserved.

6

## Some Examples

Copyright © 2024 Santa Clara County ARES®/RACES. All rights reserved.

7



**Santa Clara County ARES®/RACES**

**Message Handling  
Procedures**

Revised: 28-June-2024

<https://www.scc-ares-races.org/operations.shtml#MHP>

Copyright © 2024 Santa Clara County ARES®/RACES. All rights reserved.

8

## Message Passing Skills

- We schedule two Message Passing Classes each year.
  - January 27<sup>th</sup>
  - July 19<sup>th</sup>
- Quarterly Training Nets on the 3<sup>rd</sup> Tuesday of the 1<sup>st</sup> Month in each Quarter at 7pm on the Resource Net Repeaters is another opportunity to learn and practice.
  - January 21<sup>st</sup> - details on web site--sign up.

Copyright © 2024 Santa Clara County ARES®/RACES. All rights reserved.

9

## Training

Judy Halchin, KK6EWQ  
Revised 22-Nov-2024

Copyright © 2024 Santa Clara County ARES®/RACES. All rights reserved.

10

## Classes

- 24 training classes in 2024
- 16 unique classes
- 40 people in Introduction to Emergency Communications classes (not counting instructors and staff)
- 2025 schedule is very similar to this year's

Copyright © 2024 Santa Clara County ARES®/RACES. All rights reserved.

11

## Practices

- Monthly packet practice
- Pop-up packet drill
- Quarterly message passing practice
- Quarterly drills at County EOC radio room
- Annual exercise in September

Copyright © 2024 Santa Clara County ARES®/RACES. All rights reserved.

12

## Hospital Training

- Hospital employees got ham radio licenses (or already had them)
- ICS-214 and ICS-309 training videos
- Basic voice and packet training for hospital employees

## 2025

2025 Santa Clara County ARES/RACES/ACS - Training/Activity Calendar													
TRAINING	January	February	March	April	May	June	July	August	September	October	November	December	
WK1	Field Ops Type 3A Date: Sat 1/18 Instr: Howard Loc: SO Auditorium	Field Ops Type 3A/2 Date: Sat 2/1 Instr: Howard Loc: SO Auditorium	Net Control Type 3A Date: Sat 3/8 Instr: Howard Loc: Sunnyvale OPS	Net Control Type 3B Date: Sat 3/15 Instr: Howard Loc: Sunnyvale OPS		Event Planning Date: Sat 6/7 Instr: Howard Loc: Sunnyvale OPS		Packet Type 3A Date: Sat 8/3 Instr: Roth Loc: Sunnyvale OPS	On-site Packet Antenna Field Date: Sat 9/6 Instr: CDE Loc: Sunnyvale OPS	Packet Type 3B Date: Sat 10/4 Instr: Roth Loc: Sunnyvale OPS			
WK2		Intro to On-Cam Date: Sat 2/8 Instr: TBO Loc: Sunnyvale OPS			Net Control Type 2 Date: Sat 5/3 Instr: Howard Loc: Sunnyvale OPS	RF Search & Locate Date: Sat 6/15 Instr: TBO Loc: TBO					Packet Type 2 Date: Sat 11/8 Instr: Olanofsky Loc: Sunnyvale OPS	End of Year Summary Date: Sat 12/14 Instr: SCC Staff Loc: Sheriff's Auld.	
WK3	On-site Award Report Antenna Field Date: Sat 1/18 Instr: CDE Loc: Sunnyvale OPS		Fundamentals of On-Cam Date: Sat 3/23 Instr: TBO Loc: Sunnyvale OPS		Quarterly On-8 Date: Sat 5/17 Instr: 12 noon	Shedding Date: Sat 6/12 Instr: TBO Loc: Sunnyvale OPS	Message Passing Date: Sat 7/13 Instr: Howard Loc: Sunnyvale OPS	Field Ops Type 3A/2 Date: Sat 8/10 Instr: Howard Loc: SO Auditorium	County Wide Exam Date: Sat 9/20 Loc: TBO		<Flattened> County ECC Radio Room Orientation		
WK4	Message Passing Date: Sat 1/15 Instr: Howard Loc: Sunnyvale OPS	Quarterly On-8 Date: Sat 2/22 Instr: 12 noon	ARES Link Local Date: Sat 3/22 Instr: Howard Loc: SOCC OSC				Field Ops Type 3A Date: Sat 6/8 Instr: Howard Loc: SO Auditorium						
WK5								Quarterly On-8 Date: Sat 8/24 Instr: 12 noon			ECC Council Meeting Date: Thu 11/13 Time: 7pm Loc: SOCC OSC		
EVENING		ECC Council Meeting Date: Thu 1/10 Time: 7pm Loc: SOCC OSC			ECC Council Meeting Date: Thu 3/6 Time: 7pm Loc: SOCC OSC	Intro to On-Cam Date: Sat 6/15 Instr: CDE Loc: Sunnyvale OPS	Fundamentals of On-Cam Date: Wed 7/9 Instr: TBO Loc: Sunnyvale OPS	ECC Council Meeting Date: Thu 8/14 Time: 7pm Loc: SOCC OSC		Intro to On-Cam Date: Wed 10/15 Instr: TBO Loc: Sunnyvale OPS	Fundamentals of On-Cam Date: Wed 11/12 Instr: TBO Loc: Sunnyvale OPS		

## ICS Forms

Tim Howard, KE6TIM  
Revised 10-Nov-2024

## Forms Updated in 2024

- In 2023 the Public Health Department relocated their operations center and renamed it:
  - Was: Medical Health Joint Operations Center - MHJOC
  - Is: Public Health Department Operations Center - PHDOC
- This resulted in updates to Hospital Forms and the Recommended Form Routing Sheet.
- We are still seeing numerous cases of MHJOC still being used instead of PHDOC.
- The **Recommended Form Routing Sheet** is your friend.

### Forms Updated in 2024 (Cont.)

- The RACES Mutual Aid Request Form was updated.
- The primary changes were on page two used at the County EOC to assist with resource assignment and tracking.
- Some changes on the front for cities.
- Those are used by city ECs/AECs and the changes were shared with city RACES leaders at a quarterly EC Council Meeting.

### Errors in Form Completion

- We continue to see errors in form completion.
- Primarily 214 Activity Log and 309 Communications Log.
- Judging from the call signs, it is mostly newer operators; but, some experienced operators also make errors.
- So new or experienced, we all can do better.
- These forms are legal documents and need to be accurate.
- Let's review some of the more common errors to help us all learn. Names have been redacted to protect the innocent.

### What is missing or could be improved

<b>COMM Log</b> ICS 309-SCCo ARES/RACES		1. Incident Name and Activation Number SCCo Annual Drill X5C-24-07T		2. Operational Period (Date/Time) 9/28/24 9/28/2024 From: 1200 To: 1400	
3. Radio Net Name (for NCOs) or Position/Tactical Call			4. Radio Operator (Name, Call Sign)		
<b>COMMUNICATIONS LOG</b>					
Time (24:00)	FROM		TO		Message
	Call Sign/ID	Msg #	Call Sign/ID	Msg #	
1328	S-3	SHTB-008		XND-115	213: need trained volunteers radio ops for next shift
1331	S-2				should ask for directions to break room on arrival.
1336		XND-116	All stations ps:		213: High winds
			S-2 SHTB-005		
			S-3 SHTB-009		
6. Prepared By (Name, Call Sign)		6A. Signature		7. Date & Time Prepared	
[Redacted]		[Redacted]		9/28/24 1405	
				8. Page 2 of 2	

### What is missing or could be improved

<b>COMM Log</b> ICS 309-SCCo ARES/RACES		1. Incident Name and Activation Number County-Wide Communications Exercise X5C-24-07T		2. Operational Period (Date/Time) 9/28/24 9/28/24 From: 0800 To: 1100	
3. Radio Net Name (for NCOs) or Position/Tactical Call NCO			4. [Redacted] Same		
<b>COMMUNICATIONS LOG</b>					
Time (24:00)	FROM		TO		Message
	Call Sign/ID	Msg #	Call Sign/ID	Msg #	
0752	Same		NCO		Depart for Park 0800 921
0806					Arrived
0807					Checked out of resource
0808					checked in to Staging 147.78
1000					NCO for msg net
1100					Closed net
6. Prepared By (Name, Call Sign)		6A. Signature		7. Date & Time Prepared	
[Redacted]		[Redacted]		9/28/24 [Redacted]	
				8. Page 1 of 1	

### What is missing or could be improved

**UNIT LOG**  
ICS 214-SCC  
ARES/RACES

1. Incident Name and Activation Number  
COUNTY WIDE COMMUNICATIONS  
DWARCIS - RAYNOR PARK  
XSC-24-07T

2. Operational Period (Date/Time)  
09-28-24 09-28-24  
From: 08:30 To: 15:00

3. Unit Name / Tactical Call / Designators  
4. Unit Leader (Name, Call Sign, ICS Position)

5. Personnel Roster Assigned

Name	Call Sign	ICS Position	Home Base/City

6. ACTIVITY LOG

Time (24:00)	Major Activities & Events / Occasional Messages (Indicate From / To / Msg# / Msg Text)
0853	Leave home ODO 602
0556	Arrive Raynor Park ODO
0650	Check into staging

### What is missing or could be improved

**COMM Log**  
ICS 309-SCC  
ARES/RACES

1. Incident Name and Activation Number  
XSC-24-07T

2. Operational Period (Date/Time)  
From: To:

3. Radio Net Name (for NCOs) or Position/Tactical Call  
Shelter 2

4. Radio Operator (Name, Call Sign)

5. COMMUNICATIONS LOG

Time (24:00)	FROM		TO		Message
	Call Sign/ID	Msg #	Call Sign/ID	Msg #	
1203			NC		check in to net
1207	NC	XND-101		SO2-601	Shelter status -213
1214		SO2-001		XND-102	Shelter status
1222			NC		We only have 2nd voice at this time
1232		XND-104			
1232	NC	XND-104		SO2-602	Supplies you requested -288
1240		SO2-002	NC	XND-105	Gracie Avenue block -213
1257	NC	XND-108		SO2-603	
1259			NC		We will need to move before sundown
1309					
1309		SO2-003	NC	XND-110	Shelter status
1318	NC	XND-112	NA6D	SO2-604	213 - cots - urgent

### What is missing or could be improved

Continuation of the same form

1337		NC			Radio operators should stay for direct ops
1343	NC	XND-116		SO2-605	213 High winds alert
1352	NC	XND-117		SO2-606	213 Requisitions
1403	NC	XND-118		SO2-607	213 Supplies will arrive soon

**No check-out of net or release from assignment**

6. Prepared By (Name, Call Sign)  
7. Date & Time Prepared  
9/28/24 1405  
8. Page 1 of 1

### What is missing or could be improved

**COMM Log**  
ICS 309-SCC  
ARES/RACES

1. Incident Name and Activation Number  
XSC-24-07T

2. Operational Period (Date/Time)  
9/28/2024  
From: 0900 To: 1200

3. Radio Net Name (for NCOs) or Position/Tactical Call

4. Radio Operator (Name, Call Sign)

5. COMMUNICATIONS LOG

Time (24:00)	FROM		TO		Message
	Call Sign/ID	Msg #	Call Sign/ID	Msg #	
0753			RESURGE NET		LEAVE HOME ODO 356
0800			RESURGE NET		ARRIVE RAYNOR PARK ODO 361
0830			STABLING NET		CHECK INTO STABLING
0840			STABLING NET		CHECK OUT STABLING
0840					CHECK INTO MESSAGE NET
0845					FIELD OPS (SLEEPING)
0901			MESSAGE NET		CHECK INTO MESSAGE NET
0908	XSC	101	XAND-101	SO2-100	ICS 213
0922		XSC-101	XAND-101	SO2-101	SHelter status
0930		XSC-102	XAND-102	SO2-102	ICS 213
0940		XSC-103	XAND-103	SO2-103	INFORMAL ODO MESSAGE
1026		SO2-103	"	XND-119	ICS 213
1043		SO2-104	"	XND-121	INFORMAL MESSAGE
1059					
1053		XSC-123	XAND-104	SO2-104	ICS 213
1100			NET CLOSED		MESSAGE NET CLOSES



# Credential Updates

Tim Howard, KE6TIM  
Revised 11-Dec-2024

Copyright © 2024 Santa Clara County ARES®/RACES. All rights reserved.

25

# Earned Credentials/Endorsements 2024

Credential	Field Operator	Net Control	Packet Operator	Shadow
Type I	0	1	3	0
Type II	1	1	0	0
Type III	2	2	2	2
Type IV	2			

Endorsement	Earned
Mutual Aid Communicator (MAC)	5
County EOC Radio Operator (ERO)	5
County EOC RACES Unit Leader (RUL)	5

Copyright © 2024 Santa Clara County ARES®/RACES. All rights reserved.

26

# Total Credentials and Endorsements

## Number of Credentials Earned by Type

Credential	Field Operator	Net Control	Packet Operator	Shadow
Type I	5	7	3	5
Type II	17	13	13	9
Type III	42	30	33	20
Type IV	54			

## Number of Endorsements Earned

Endorsement	Earned
Mutual Aid Communicator (MAC)	43
County Fire Station Radio Operator (FRO) (Pending)	0
County EOC Radio Operator (ERO)	17
County EOC RACES Unit Leader (RUL)	5

Copyright © 2024 Santa Clara County ARES®/RACES. All rights reserved.

27

# Credentialing

- Credentialing in technical fields (usually called certification) has been used for 25+ years to verify an individual's ability.
- Credentialing is becoming more prevalent in Emergency Management, especially where mutual aid may be utilized.
- The State of California has a credentialing program for EOC positions and many cities are having their staff earn credentials.
- Served agencies are increasingly aware of credentialing and are expecting team members to be credentialed.

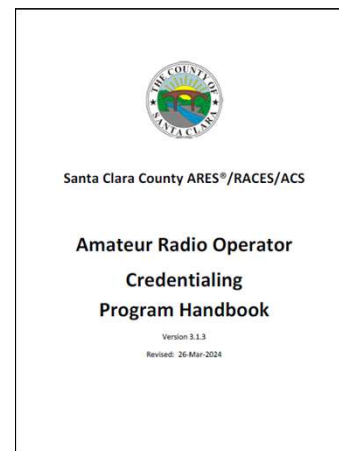
Copyright © 2024 Santa Clara County ARES®/RACES. All rights reserved.

28

## Credentialing

- **Credibility:** Credentials demonstrate your training, knowledge, skills, and experience; and enhances your credibility with peers and served agency personnel.
- **Commitment:** Earning credentials demonstrates your commitment to the EmComm role, validates your acquired skills as a volunteer, and can open doors to leadership and training roles within the organization.
- **Assignments:** Credentials can assure those that assign you to a task know that you are capable of handling whatever challenges the assignment presents.

## Credentialing Program Handbook



<https://www.scc-ares-races.org/credentials/index.shtml#overview>

## Database Update

If you have a County DSW, the sticker on your DSW Card Expires at the end of December.



New stickers will be provided to your EC for distribution if you have updated your database contact information by December 31<sup>st</sup>.

## Update/Verify Contact Info



## Packet Network Update 2024 Year End Review

Jim Oberhofer, KN6PE  
Revised 30 November 2024

Copyright © 2024 Santa Clara County ARES/RACES. All rights reserved.

33

## Highlights -- Outpost and PackItForms

Copyright © 2024 Santa Clara County ARES/RACES. All rights reserved.

34

### What's in the box?

- SCCo Integrated Packet Installer 163C  
\*\*\* PRERELEASE \*\*\*
- Outpost Packet Message Manager
  - GUI-based interface for managing packet communications
  - Makes using packet as simple as using e-mail
- PackItForms
  - Next generation HTML-based forms for use with Outpost
  - Manual operation without Outpost



Copyright © 2024 Santa Clara County ARES/RACES. All rights reserved.

35

### SCCo Installer v163C September 2024

#### PackItForm 3.16\*

- Various forms and .pdf updates
- Even better manual operation support
  - Auto-logging of sent and received messages
  - Updated ICS-309 log maintenance
  - Enhancements and bug fixes from user feedback

#### Outpost v3.8.6\*

- Resolves 3 reported defects; adds 6 requested changes, including...
  - Signature update on the ICS-309 comm log
  - Address book address expansion with sent messages

\*See the release notes for details



Copyright © 2024 Santa Clara County ARES/RACES. All rights reserved.

36

### What's new

(or 6 things to make your packet life easier)

1. Setting up Message ID prefix for Tac Calls
2. Packet Forms and Manual Packet
3. Message search
4. Monitor RF Packet Traffic
5. Fixing JNOS extra line feeds
6. Packet Field References

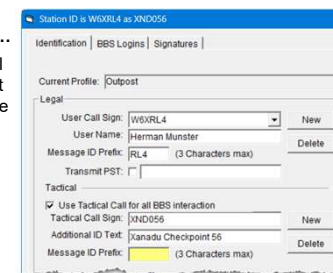
### 1. Setting up Message ID prefix for Tac Calls

**Situation:** You are deployed with a tactical call. You get a call from the EOC that the tac call message ID is not set up correctly.

**Problem:** Message IDs are both unique and help reference the sending station.

**Solution:** With Outpost

1. Select Settings > Station ID...
2. When you fill in your FCC Call sign, Outpost picks up the last 3 characters of your call as the Message ID Prefix.
3. When setting up the Tactical Call, you need to fill it in yourself.
4. Ask your shift supervisor or exercise coordinator for what this field value should be.



**Examples:** Monthly Exercise: Tac Call=XND056 Msg ID Prefix = X56  
 City Deployment: Tac Call=CUPDZA Msg ID Prefix = DZA

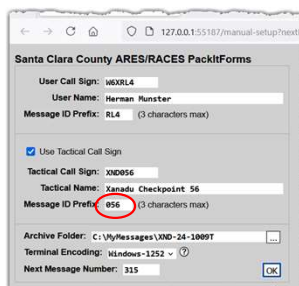
### 1. Setting up Message ID prefix for Tac Calls

**Situation:** You are deployed with a tactical call. You get a call from the EOC that the tac call message ID is not set up correctly.

**Problem:** Message IDs are both unique and help reference the sending station.

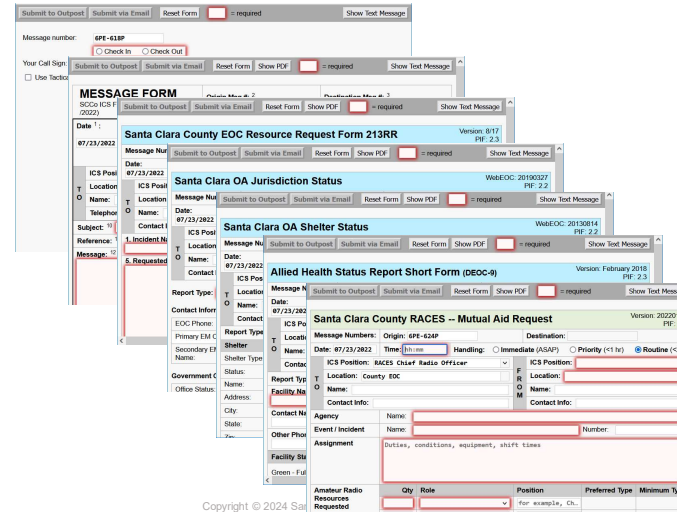
**Solution:** Manual Operations

1. Find and click on manual.cmd
2. PacketForms picks up the last 3 characters of your FCC call as the Msg ID Prefix.
3. The Tactical Call Msg ID Prefix does the same, but may not be correct.
4. Ask your shift supervisor or exercise coordinator for what this field value should be AND change this field if necessary.



**Examples:** Monthly Exercise: Tac Call=XND056 Msg ID Prefix = X56  
 City Deployment: Tac Call=CUPDZA Msg ID Prefix = DZA

### 2. PacketForms



### County Use of PackItForms

- Santa Clara County PackItForms contains these **public** forms
  1. *XSC Check-In/Out Message* Form
  2. *XSC ICS-213 Message* Form adapted for Santa Clara County to transmit messages.
  3. *XSC EOC-213RR Resource Request* Form – Requests specific resources needed to support an emergency.
  4. *XSC OA Jurisdiction Status* Form – Reports jurisdiction emergency situation status to county OEM.
  5. *XSC OA Shelter Status* Form – Reports information and status on shelters opened in the cities to county OEM.
  6. *XSC Allied Health Facility Status* – Reports information & status of private Skilled Nursing facilities to SCC Public Health Department.
  7. *XSC RACES Mutual Aid Request* Form – Used by a jurisdiction to request a RACES Mutual Aid.
- The SCC Installer program automatically installs these packet forms along with Outpost.
  - Additional forms may be provided by your EC

Copyright © 2024 Santa Clara County ARES/RACES. All rights reserved.

41

### Updated PackItForm Defaults

PackItForms	Handling Order	TO ICS Position	To Location
ICS 213 Message Form	--	--	--
EOC Resource Request 213RR	--	Planning Section	County EOC
OA Jurisdiction Status	Immediate	Situation analysis Unit	County EOC
OA Shelter Status	Priority	Mass Care and Shelter Unit	--
Allied Health Status	Routine	EMS Unit	<b>PHDOC</b>
RACES Mutual Aid Request	Routine	RACES Chief Radio Officer	County EOC
HAvBed Report	Immediate	EMS Unit	<b>PHDOC</b>
Medical Facility Status	Immediate	EMS Unit	<b>PHDOC</b>
<b>Resource Request Form #9A</b>	<b>Obsolete -- Replaced by EOC Resource Request 213RR</b>		

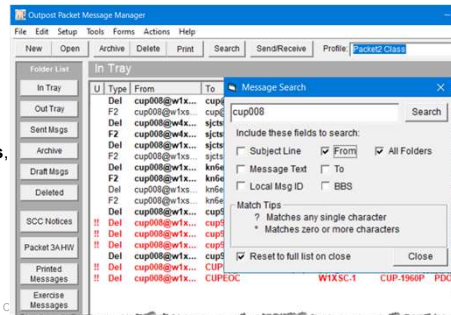
- Aligns with the *RACES Recommended Form Routing Cheat Sheet*; updated **March 2024**
- Updates are in **BOLD** text
- Fields can be changed at message create time
- Always double-check the *RACES Recommended Form Routing Cheat Sheet* for your specific situation

Copyright © 2024 Santa Clara County ARES/RACES. All rights reserved.

42

### 3. Message Search

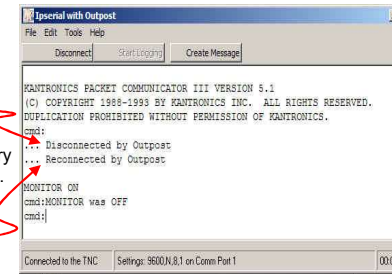
- Situation:** This assignment has been in place for several shifts with plenty of packet message traffic already passed.
- Problem:** Now, someone asks for a copy of a message you received. Where is it?
- Solution:**
1. On Outpost, click on the **Search** menu.
  2. Enter some text that you know is likely part of the message, which fields it is in (or check all fields), and whether you want to check this or all folders.
  3. Press **Search**
  4. For  **All Folders**, **Type** field shows the message location.



Copyright © 2024 Santa C.

### 4. Monitoring Packet traffic

- Situation:** Some users like to watch what is going on with on a frequency in between Send/Receive Sessions to see if the frequency is clear.
- Solution:**
1. From Outpost, **Tools > Interactive Packet > Serial / Com Port**.
  2. From Ipserial, Tools > Options. Check  **"Turn on Packet Monitoring (MON ON)..."**. Press **OK**.
  3. When you press **Connect**, Ipserial.exe sends the MON ON command to the TNC to start monitoring.
  4. When Outpost starts a Send/Receive session, it requires the serial port.
    - it tells Ipserial.exe to disconnect.
    - It opens the com port and sends the necessary TNC & BBS commands.
    - When done, it tells Ipserial to reconnect to the Com Port.



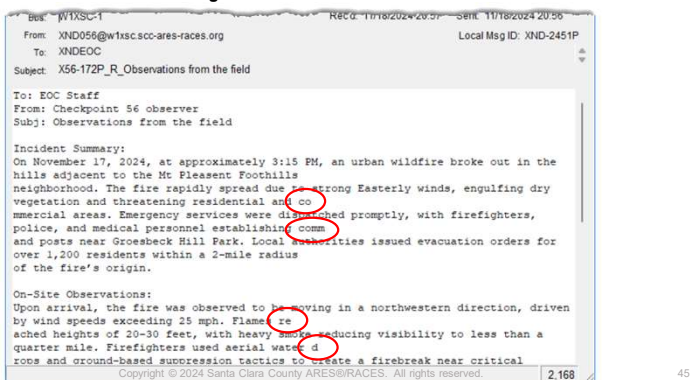
Copyright © 2024 Santa Clara County ARES/RACES. All rights reserved.

44

### 5. Fixing JNOS Extra Line Feeds

\*\*\* DRILL TRAFFIC \*\*\*

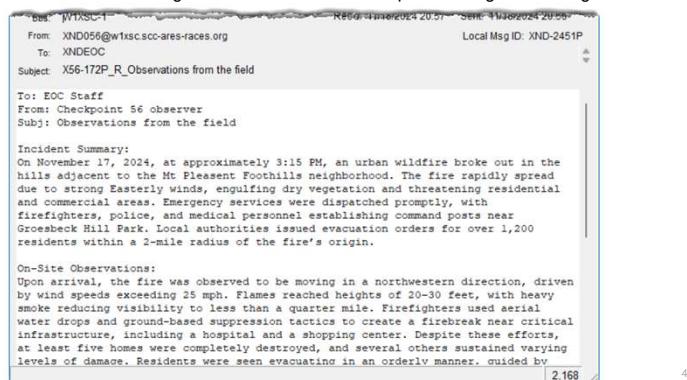
**Situation:** JNOS causes message text lines greater than 127 characters to have a CR/LF inserted regardless of where it is in a sentence or word. PackItForms handles this situation nicely. But what happens if an **Informal Message** is sent? This is what it could look like...



### 5. Fixing JNOS Extra Line Feeds

\*\*\* DRILL TRAFFIC \*\*\*

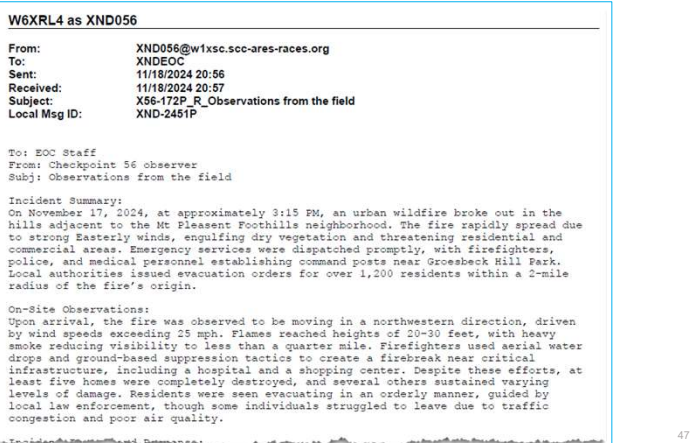
**Solution:** If you come across this situation, try this:  
 1. In the message form, press **View > JNOS Line Fix (BETA)**  
 2. This change is not permanent and cannot be saved.  
 3. Pressing the forms' **Print** button will print the original message.



### 5. Fixing JNOS Extra Line Feeds

\*\*\* DRILL TRAFFIC \*\*\*

**Solution:** 4. But, pressing **File > Print** will print the corrected version.



### 6. Amateur Packet Radio Field Reference, Type III

**What is it**

- an Unofficial SCCo RACES reference.
- Provides a reminder (job aid) for how to perform tasks that need to occur during a packet field deployment.
- Helps ensure task consistency, completeness, and operational alignment with SCCo RACES policies and procedures.

**What it is not**

- the only source of information on which you should rely.
- an official SCCo RACES deliverable.

#### Amateur Packet Radio Field Reference, Type III

For SCCo RACES Responders

October 2024



1/20

Copyright © 2024 Santa Clara County ARES/RACES. All rights reserved.


48

## 6. Amateur Packet Radio Field Reference, Type III

### Amateur Packet Radio Field Reference, Type III

For SCCo RACES Responders

October 2024



**Table of Contents**

- 1 QUICK REFERENCE.....
- 2 INTRODUCTION.....
  - 2.1 PURPOSE.....
  - 2.2 HOW TO USE THIS HANDBOOK.....
- 3 PACKET OPERATOR CHECKLIST.....
- 4 PACKET STARTUP PROCEDURE.....
- 5 CLIENT SOFTWARE.....
- 6 PACKET MESSAGING.....
  - 6.1 PACKET MESSAGING BASICS.....
  - 6.2 FREE FORM (PLAIN TEXT) MESSAGE.....
  - 6.3 SENDING A SPREADSHEET, CSV FILE – ONE APPROCH.....
- 7 MESSAGE ADDRESSING.....
- 8 STANDARD SUBJECT LINE FORMAT.....
- 9 CHECK-IN, CHECK-OUT MESSAGE.....
- 10 RECOMMENDED FORM ROUTING CHEAT SHEET.....
- 11 ARCHIVING EVENT DOCUMENTATION.....
  - 11.1 CREATE THE ICS 309 COMMUNICATION LOG.....
  - 11.2 CREATE A PRINTABLE LIST OF YOUR MESSAGES.....
  - 11.3 CREATE AN ARCHIVE OF YOUR MESSAGES.....
  - 11.4 RESET (CLEANUP) OUTPOST FOR THE NEXT EVENT.....

<https://bit.ly/PacketT3>


Copyright © 2024 Santa Clara County ARES®/RACES. All rights reserved. 49

## 6. Amateur Packet Radio Field Reference, Type II

### Amateur Packet Radio Field Reference, Type II

For SCCo RACES Responders

October 2024



**Table of Contents**

- 1 QUICK REFERENCE.....
- 2 INTRODUCTION.....
  - 2.1 PURPOSE.....
  - 2.2 HOW TO USE THIS HANDBOOK.....
  - 2.3 OTHER REFERENCES.....
- 3 MANUAL PACKET OPERATIONS.....
  - 3.1 TNC COMMANDS.....
  - 3.2 BBS COMMANDS.....
  - 3.3 CONNECTING TO THE TNC WITH PUTTY.....
  - 3.4 START OF SHIFT: CONFIGURE TNC SETTINGS.....
  - 3.5 END OF SHIFT: RESTORE TNC SETTINGS.....
  - 3.6 GETTING READY FOR MANUAL MESSAGING.....
  - 3.7 MANUAL MESSAGE BASICS.....
  - 3.8 SENDING A MANUAL PACKETFORM MESSAGE.....
  - 3.9 RECEIVING A PACKETFORM MESSAGE MANUALLY.....
  - 3.10 NOTES ON OUTPOST TAGS.....
  - 3.11 VIEWING SAVED MESSAGES.....
  - 3.12 NOTES ON MANUAL ICS 309 COMM LOG.....

<https://bit.ly/PacketT2>

Copyright © 2024 Santa Clara County ARES®/RACES. All rights reserved. 50

# mpmp, P1 and HF Credentials & SHARES

Mark Laubach, K6FJC

14-Dec-2024

Copyright © 2024 Santa Clara County ARES®/RACES. All rights reserved. 51

## Monthly Packet Messaging Passing Practice

### January to November stats

	Not Held							Not Held				Totals
	Jan	Feb	Mar	Apr	May	Jun	Jul	Aug	Sep	Oct	Nov	
<b>Participants</b>	24	21		19	20	16	11		16	27	15	169
<b>Messages by participant by Type</b>												
ICS213	29	29		57	40	28	33		39	40	42	337
EOC213RR				20		14	11		19	27	21	112
Shelter Status					20		11			28		59
Allied Health Status		22										22
RACES Mutual Aid	26						11					37
CSV	26					14						40
Op-to-Op & Other		281		249	205	?	38		216	311	208	1508
<b>Total Messages</b>	816	768		674	577	387	330		617	913	602	5684

You can review all past practices on the MPMP Training Page:  
[https://www.scc-ares-races.org/training/practice/monthly-packet-message-practice/monthly\\_packet-message-practice.html](https://www.scc-ares-races.org/training/practice/monthly-packet-message-practice/monthly_packet-message-practice.html)

Copyright © 2024 Santa Clara County ARES®/RACES. All rights reserved. 52



## Packet Credential Changes

- Packet Operator Type I (P1)
  - Removing: out of county assignments
  - Moving out of P1 to a new area of focus:
    - Set up, manage, and troubleshoot a JNOS-based packet BBS system, running on Ubuntu, etc.
  - Changing focus to W5XSC BBS to set up and operate for a training or exercise event, with instructions from net team
  - Refining knowledge items, digipeaters and nodes, and other problems
  - Etc.
- Motivations
  - P1 should be on parallel with other Type 1 credentials, e.g., specialist and plan, design, deploy, train, ...
  - It's a lot of work to complete existing requirements
  - P1 credential != county BBS sysop
    - Doesn't need to incorporate SCCo BBS sysop/network
- **When: next Credential Program Handbook update**

Copyright © 2024 Santa Clara County ARES®/RACES. All rights reserved.

53

## Member of County Networking Staff

- The network team is looking for a few “good people”
  - In discussion likely in the form of a member of network staff position posting (likely)
  - Discussed new endorsement not the way to go
- Recommendation from CRO and Pkt Manager
- Prerequisites: P2+, demonstrated team player
- Not for everyone, interview will be required with credential evaluator and network team member – think of a position posting
- Successful interview, candidate will be assigned mentor
- County BBS knowledge and demonstration (for all candidates)
  - Building Ubuntu-based JNOS system to county configuration
  - BBS JNOS sysop privileges demonstration, message and notice management, log maintenance, Ubuntu tcp/ip networking, etc.
  - Knowing what and what not to touch
- Additional skillsets desired among one or more of the following
  - Network management, Network security, firewalls, monitoring, Network routing, email (configuration, spam), devops, analysis, logging, maintenance and upgrades, SCCo BBS operational knowledge, etc.



**This is all under consideration and development**

Copyright © 2024 Santa Clara County ARES®/RACES. All rights reserved.

54

## Changes in County EOC Radio Room HF Radio Remove / New State-funded HF Technology

- New radio technology has reduced the need for HF radio users to deal with the complexities of HF propagation (solar conditions, time of day, antenna orientation, etc.)
  - State has called this SHARES for SHARed RESsources
  - SCCo OEM has two rigs: EOC radio room fixed and mobile unit
- The use of new technologies all but eliminates the need to be concerned about HF propagation for state-wide EmComm purposes.
- The need for a three level HF Credential is being removed from the Credentialing Program and a “SHARES Radio Operator Endorsement” is being added to the next version of the Credentialing Program Handbook.

Copyright © 2024 Santa Clara County ARES®/RACES. All rights reserved.

55

## Changes in County EOC Radio Room HF Radio Remove / New State-funded HF Technology

- The “SHARES Radio Operator Endorsement” will be available to anyone holding the EOC Radio Operator Endorsement.
- Early next year we will offer a SHARES HF Radio Orientation class for those interested.

### Quick Overview

- Based on Codan Communications equipment (Australia)
- Limited to state civil defense and emergency management agencies and some select agencies within the state of California.
- Shared channels in the 2 to 8 MHz range. Access to 10 channels providing point-to-point emergency radio coverage across the state. 24x7 Link Quality Analysis and Automatic Link Establishment to eliminate ToD propagation concerns
- Operates in accordance with FCC Rules Part 90 – Private Land Mobile Radio Services (primary) and Part 97 Amateur
- All “push button”

Copyright © 2024 Santa Clara County ARES®/RACES. All rights reserved.

56



### SHARES Base Station HF Equipment



Copyright © 2024 Santa Clara County ARES/RACES. All rights reserved.

57

### SEMS - Reminder Standardized Emergency Management System



Copyright © 2024 Santa Clara County ARES/RACES. All rights reserved.

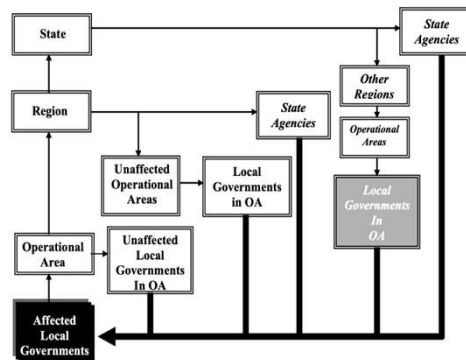
58

### SEMS General Flow of Requests and Resources

- OA encompasses a county
  - 58 counties
- Six mutual aid regions

**NOTES**

- Local governments may request mutual aid directly from other local governments where local agreements exist.
- Discipline-specific mutual aid systems may have procedures that provide additional methods of obtaining state resources.
- Volunteer and private agencies may be involved at each level.



Copyright © 2024 Santa Clara County ARES/RACES. All rights reserved.

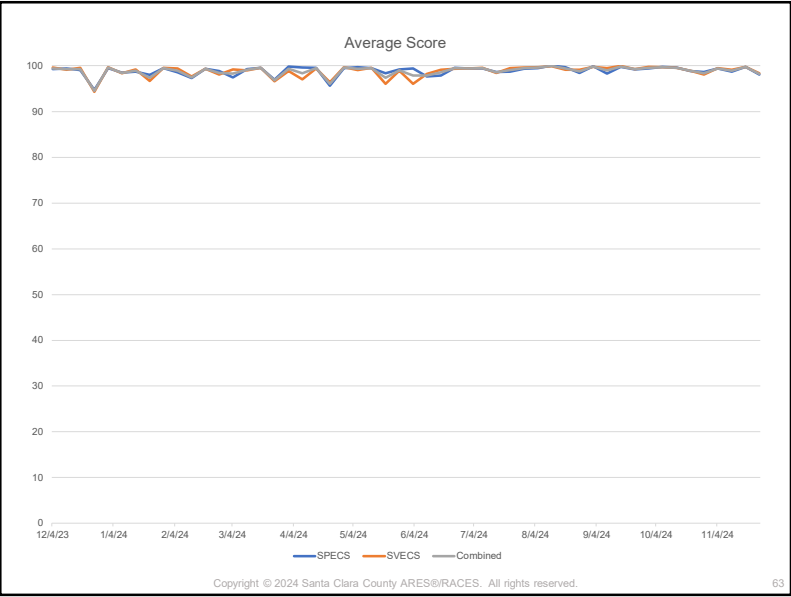
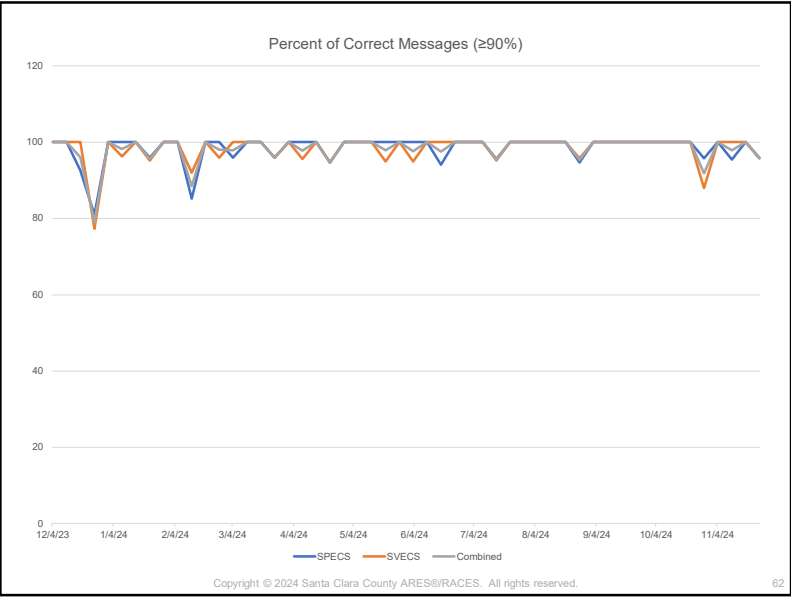
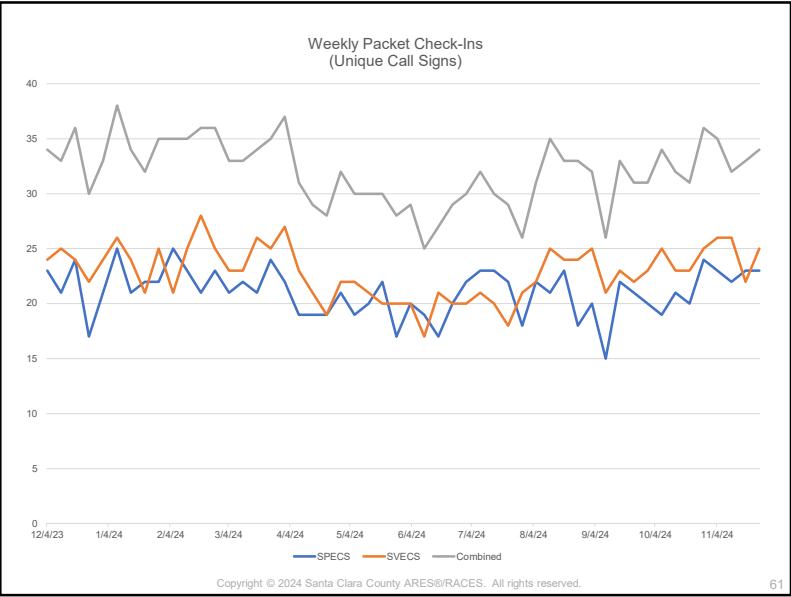
59

### Weekly Packet Practice

Steve Roth, KC6RSC  
Revised 11-Dec-2024

Copyright © 2024 Santa Clara County ARES/RACES. All rights reserved.

60



### Multi-Year Comparison

	2018	2019	2020	2021	2022	2023	2024
Total Messages	2116	2844	3138	3226	3200	2932	2408
% Correct	93.2%	93.7%	95.5%	96.6%	88.4%	83.1%	98.3%
Unique Calls	25.5	29	31	30	27.4	34.3	32.0

Copyright © 2024 Santa Clara County ARES/RACES. All rights reserved. 64

## Mailbox Full — Now What?

You are assigned to a rarely used station. You connect to the BBS, and it has 142 messages waiting. That will take forever!

1. Abort the connection
2. Switch to alternate BBS
3. Connect manually, list with LL. If the backed-up messages are obsolete or unimportant, kill them with K.

Copyright © 2024 Santa Clara County ARES®/RACES. All rights reserved.

65

## Can't Wait for Bulletins to Download?

You're waiting for a critical message but Outpost wants to download the XSCPERM bulletins. That will take too long!

1. Abort the connection
2. Outpost: Setup → BBS → Receiving
3. Turn off "Retrieve Bulletins" checkbox. (Don't forget to turn it back on later!)

Copyright © 2024 Santa Clara County ARES®/RACES. All rights reserved.

66

## Switching between RF and TCP/IP network access in Outpost

Using Profiles extensively

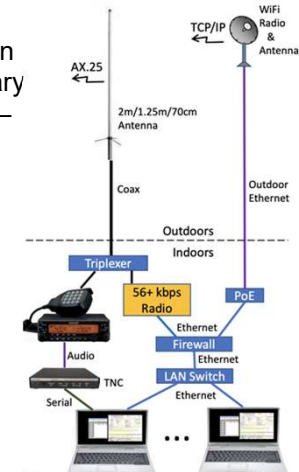
Andreas Ott, K6OTT  
Revised 11-Dec-2024

Copyright © 2024 Santa Clara County ARES®/RACES. All rights reserved.

67

## BBS settings and access paths

- you are in an EOC or tactical location
- you know your primary and secondary BBS, your tactical call, your FCC call – and know how to configure all this in Outpost
- your main access to the BBSen has been over RF
- you recently got connected to the SCCo Systems TCP/IP Subscriber Network (or your EOC location has a wired Ethernet connection to our network)



Copyright © 2024 Santa Clara County ARES®/RACES. All rights reserved.

68

## Workflows on RF

- No Issues: you are using your primary BBS over RF
- primary BBS “unreachable”: you manually switch to the secondary BBS, and announce this fact on a net to the County EOC (and other stations) so that they can adjust sending you messages to your secondary BBS address
- primary BBS “reachable”: you have the choice of continuing on the secondary BBS or switching back to the primary BBS (same..., announce it, so others know where to find you)

→ your easiest way of “switching around” is by using Outpost Profiles

## Create RF Profiles

- the default Outpost profile after new install is “Outpost”



- create new profile (naming convention below)
- for your primary BBS, device and StationID
- test it!
- repeat for your secondary BBS, then test some more!
- practice switching between profiles, do not forget to “switch” and verify the radio frequency at the same time
- switching between RF bands on the same BBS without changing the profile

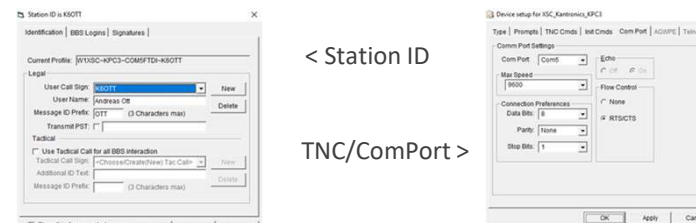
## Profile Parameters

- BBS name
- device/connection
- Interface name
- StationID (your callsign, tactical or FCC)
- Create, save as (use ~ in profile name as separator)

Examples:

- W1XSC~KPC3~COM5FTDI~K6OTT
- W1XSC~TELNET~W1XSC~K6OTT

## Parameter details



< Station ID  
TNC/ComPort >

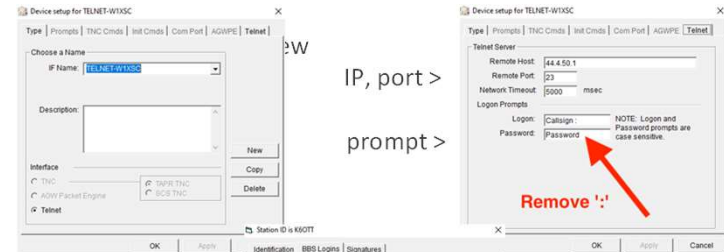
finally: Save it



### Create Telnet Profile

- for your primary BBS, telnet connection and StationID
- add username and password, remove colon ":" from password prompt field
- test it!
- repeat for your secondary BBS
- test some more!
  
- when switching back to any RF profile, do not forget to "switch" and verify the radio frequency to match the BBS frequency on that band at the same time

### Telnet details



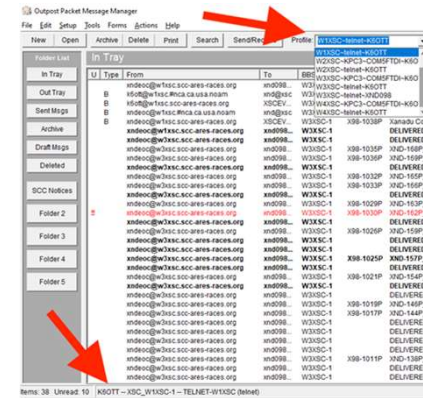
BBS username and password >

### Workflows on Telnet

- No Issues: you are using your primary BBS over telnet
  - primary BBS "unreachable": you manually switch to the secondary BBS, and announce this fact on a net to the County EOC (and other stations) so that they can adjust sending you messages to your secondary BBS address
  - primary BBS "reachable": you have the choice of continuing on the secondary BBS or switching back to the primary BBS (same..., announce it, so others know where to find you)
- your easiest way of "switching around" is by using Outpost Profiles

### Switching around

Always verify Outpost status bar on the bottom



## References

For Outpost, see training slide decks from SCCo ARES/RACES Packet Operations classes

[Packet Operations - Type III, Part A](#)

[Packet Operations - Type III, Part B](#)

[Packet Operations - Type II](#)

and of course the [Outpost Documentation](#)

Copyright © 2024 Santa Clara County ARES®/RACES. All rights reserved.

77

## Safety issue observed: no fuses in power cables

Batteries are no fun

Andreas Ott, K6OTT

Revised 11-Dec-2024

Copyright © 2024 Santa Clara County ARES®/RACES. All rights reserved.

78

## Energy content in a battery

- Energy content in a (SLA) battery:  
 $3.6 * \text{voltage} * \text{mAh} = \text{Energy [Joule]}$   
 Example: SLA 12V@18Ah  
 $3.6 * 12 * 18,000 \approx 777 \text{ kJ}$   
 (approximate energy needed to boil 1/2 gal of water from room temp)
- Energy density in LiFePO4 battery:  
 > 3x of SLA battery by weight, also higher load current possible

Copyright © 2024 Santa Clara County ARES®/RACES. All rights reserved.

79

## The Big Short

Now picture this: if your battery shorts out, you will set free most of the energy in a fraction of one second (aka. boil the water in < 1 second). Until something fails, such as the wire melting, or the battery liquids heat past their boiling point, with “steam” quickly escaping.

Copyright © 2024 Santa Clara County ARES®/RACES. All rights reserved.

80



## Rapid Unscheduled Disassembly

Escaping electrolyte steam usually leads to the entire battery exploding. [\*]  
 Good engineering practice is to insert something into the circuit that will fail before it turns into an incident, preferably a protective device such as a fuse. "All circuits shall have fuses".

\* "Don't try this at home - go to a friend's house."

Copyright © 2024 Santa Clara County ARES/RACES. All rights reserved.

81

## Fuses to the rescue

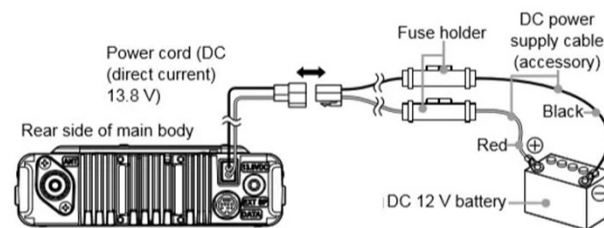


image credit: K0BG/Yaesu

Protecting battery and load (equipment)

Copyright © 2024 Santa Clara County ARES/RACES. All rights reserved.

82

## Charge controllers with electronic load limiters

Check the manual: They will recommend minimum wire sizes **and** fuses, at least at the battery and the power source!

DC Load:  
 20 amps  
 cutoff

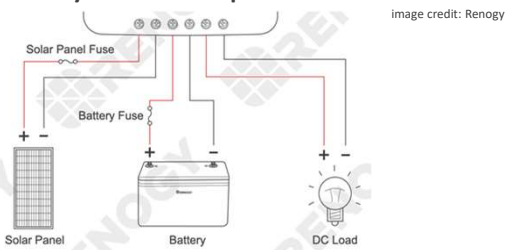


image credit: Renogy

Copyright © 2024 Santa Clara County ARES/RACES. All rights reserved.

83

## Working with a Served Agency Golden Eagle 2024

Jeff Grafton, AJ6XZ  
 Revised 10-Dec-2024

Copyright © 2024 Santa Clara County ARES/RACES. All rights reserved.

84

### Golden Eagle 2024: Hellyer Park C-POD

- Simulated M7.5 earthquake
- County OEM established Type III C-POD in Hellyer Park
  - Simulated cell phone outage at site
- RACES mobilized to provide comms between C-POD site and EOC

Copyright © 2024 Santa Clara County ARES®/RACES. All rights reserved.

85

### Golden Eagle 2024: Hellyer Park C-POD



Copyright © 2024 Santa Clara County ARES®/RACES. All rights reserved.

86

### Golden Eagle 2024: A few surprises

- RACES wasn't in the org chart...

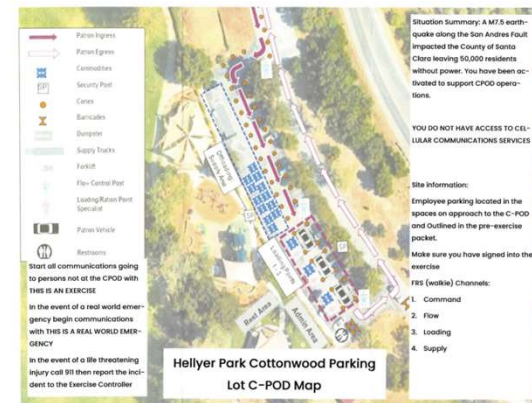


Copyright © 2024 Santa Clara County ARES®/RACES. All rights reserved.

87

### Golden Eagle 2024: A few surprises

... or the site map



Copyright © 2024 Santa Clara County ARES®/RACES. All rights reserved.

88

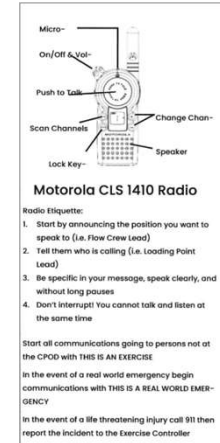
### Golden Eagle 2024: Field Setup



Copyright © 2024 Santa Clara County ARES@/RACES. All rights reserved.

### Golden Eagle 2024: More surprises

- FRS radios were used for on-site comms
- The IC expected RACES would handle all comms, including FRS
- RACES staff had not been briefed on use of FRS



Copyright © 2024 Santa Clara County ARES@/RACES. All rights reserved.

### Golden Eagle 2024: Message flow

- Many incident staff (including IC) were unfamiliar with forms and message flow to EOC
- RACES provided blank forms and coaching
- Handing off the *Recommended Form Routing* Cheat Sheet worked wonders

SCCo ARES/RACES Recommended Form Routing

Usage:

- This cheat sheet summarizes the recommended handling, To Location, and To ICS Position when sending official forms via amateur radio.
- The message author can select whatever handling, To Location and ICS Position (via checkbox for each message)
- **Default:** As a general rule, address a message to the most specific ICS position that is staffed at the destination location. If the specified unit is not staffed, send it to the branch. If the branch is not staffed, send it to the section.
- **Exception:** As a general rule, deliver the message to the leader of the "To ICS Position" identified in the message: Unit Leader, Branch Director, Section Chief, or their Deputy. If that position is not staffed or available, deliver to the next higher position in the ICS hierarchy shown below.

Form Type	Handling	To Location **	To ICS Position **
General EOC	Author defined	Author defined	Author defined
ICS-213 Message Form	Priority (P) or Non-Priority (N) (checkbox)	County EOC	Planning Section
EOC-213RR Resource Request	Priority (P) or Non-Priority (N) (checkbox) Immediate (IMM) (checkbox) Priority (P) or Non-Priority (N) (checkbox)	County EOC	Planning Section
OH Jurisdiction Status	Immediate (IMM)	County EOC	Situation Analysis Unit Plan. Planning Section
OH Shelter Status	Priority (P) or Non-Priority (N) (checkbox)	For City Managed: City EOC For County Managed: County EOC	Mass Care and Shelter Unit Plan. Care and Shelter Branch Plan. Operations Section

\*\* For actual EOC activations, use the default To Location and To ICS Position(s) as indicated, unless told otherwise by the message originator.  
 For an ARES/RACES exercise or training event, use the information given for that event, e.g. "Santa Clara EOC" may be specified instead of "County EOC", etc.

Santa Clara County ARES/RACES      Revised: 20240308      Page 4 of 2

Copyright © 2024 Santa Clara County ARES@/RACES. All rights reserved.

### Golden Eagle 2024: Operations

- RACES sent and received multiple 3<sup>rd</sup>-party messages over packet and voice
  - ICS-213
  - 213RR with routing slip
  - Informal
- Cross-trained operators
  - Able to fill in while others were coaching incident staff or taking breaks

Copyright © 2024 Santa Clara County ARES@/RACES. All rights reserved.

## Golden Eagle 2024: Takeaways

- Exercising with served agencies is invaluable
- Keep current on training and practice so you know how message flow works
- *Semper Gumby!*



Copyright © 2024 Santa Clara County ARES/RACES. All rights reserved.

93

## W2XSC BBS Failure June 8<sup>th</sup> – 16<sup>th</sup>

Tim Howard, KE6TIM  
Revised 16-Nov-2024

Copyright © 2024 Santa Clara County ARES/RACES. All rights reserved.

94

## Initial Evaluation

- Problems with W2XSC were reported
- A number of remote troubleshooting steps were taken.
  - The network connection between the BBS PC and the other network infrastructure at the site had failed.
  - The JNOS BBS, the TNCs, and the Radios were fully functional.
  - The BBS was usable as a standalone BBS without external connectivity to the rest of the network.
- It was determined that a spare computer, data switch, and data cable should be taken to the site.
- Because of the remote location of the site, other parts, tools, and equipment were collected for the trip.

Copyright © 2024 Santa Clara County ARES/RACES. All rights reserved.

95

## Plan for Trip to Site

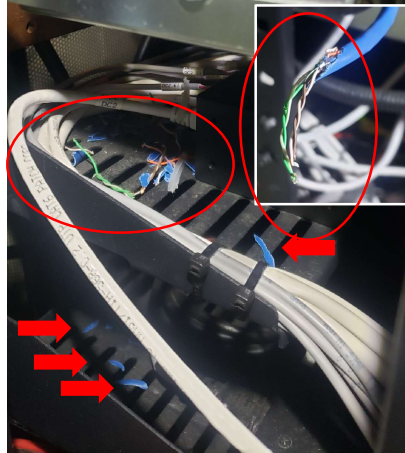
- Over a one hour drive one-way
- Take anything you might need. Spare parts for repair and also backup monitor, keyboard, mouse, tools, etc.
- Need a high clearance vehicle in good weather, 4WD at other times.
- Because of the remote location we want to send at least two people.
- It took a couple of days to get the material together.
- The keys to access the site were not readily available.
- Once on site, it was quickly determined there was a cable issue.

Copyright © 2024 Santa Clara County ARES/RACES. All rights reserved.

96

## Initial Visit

- Cable was replaced
- TNC Firmware updated
- General cleaning and inspection of cabinet
- Remote testers checked all radio, BBS, and email connections to the site
- The site was up and back to normal operation

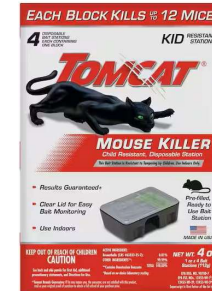


Copyright © 2024 Santa Clara County ARES/RACES. All rights reserved.

97

## Less than 16 hours later

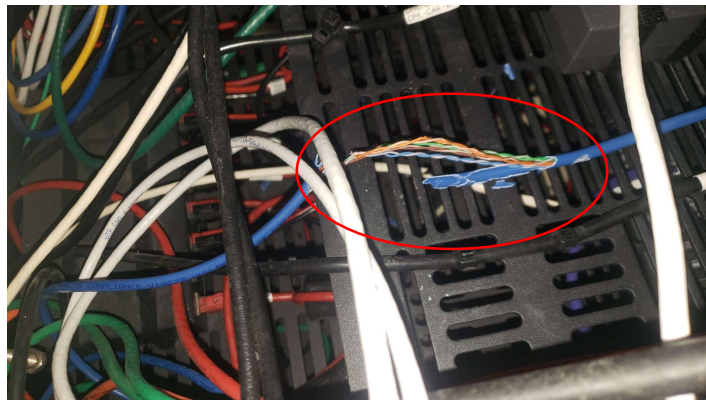
- The BBS failed with the exact same symptoms. Remote diagnostics indicated a similar failure.
- A second visit the next day was scheduled with spare parts, a hardened data cable, and mouse deterrent.



Copyright © 2024 Santa Clara County ARES/RACES. All rights reserved.

98

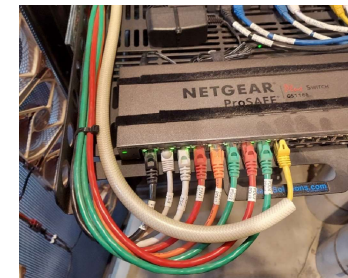
## Second Visit



- The same data cable was chewed breaking wires

Copyright © 2024 Santa Clara County ARES/RACES. All rights reserved.

99



- The data cable was replaced with the shielded cable.
- No additional problems with mice eating cables
- Site owner has placed more traps and sealed any openings found. Reminded tenants to keep door closed.
- Thanks to:
  - Thomas Leibold – spare parts and technical expertise
  - Bertrand Achard – extra tools and computer monitor
  - Tim Howard – driver and support

Copyright © 2024 Santa Clara County ARES/RACES. All rights reserved.

100



## Additional W2XSC Issues

- PG&E PSPS power shutdown
  - Generator started but shutdown failed due to overheating
  - Fan Blades were broken providing no cooling air
  - Mice or larger rodents had got inside the fan shroud and when engine started the fan blades broke off.
  - Our batteries did not work due to several years of use with numerous PG&E and generator issues
- Site owner has enclosed all openings to the generator with wire mesh to allow air flow but block mice and other rodents from access
- New batteries are on order and when they arrive a site visit will be scheduled

Copyright © 2024 Santa Clara County ARES®/RACES. All rights reserved.

101

## Q&A

All Training Staff

Copyright © 2024 Santa Clara County ARES®/RACES. All rights reserved.

102

## Thank You!

Please check your email and follow the instructions to complete and return the Course Evaluation.

To get course credit the Course Evaluation is due by next Saturday.

If you have questions or feedback about this or other training activities, you can join our Training discussion group.

<https://scc-ares-races.groups.io/g/training>

This is a moderated group.

**See you at a training class or exercise next year!**

Copyright © 2024 Santa Clara County ARES®/RACES. All rights reserved.

103