

## USE AND DISTRIBUTION NOTICE

- Santa Clara County RACES authorization is granted to use and duplicate this material as-is as long as this page and the copyright notices on each page are included, acknowledging Santa Clara County ARES®/RACES as the holder of the copyright.
- Permission is granted to adapt this presentation to your needs as long as you acknowledge our copyright and include a note similar to "adapted with permission from Santa Clara County ARES®/RACES"
- For additional information on training or any of our programs send an email to: [info@scc-ares-races.org](mailto:info@scc-ares-races.org)

Copyright (C) 2024 Santa Clara County ARES®/RACES. All rights reserved.

0

## Field Operations - Type III Part A


### Test your HT

- Make sure your radio is programmed to these frequencies:
  - Primary            147.525 Simplex, No Tone
  - Backup 1           446.500 Simplex, No Tone
  - Backup 2           146.490 Simplex, No Tone
- Set your radio to its lowest power setting.
- Call Net Control using your FCC Call Sign for a radio Check.

**You must use a headset or ear bud**

Copyright (C) 2024 Santa Clara County ARES®/RACES. All rights reserved.

1



# Field Operations Type III Part A



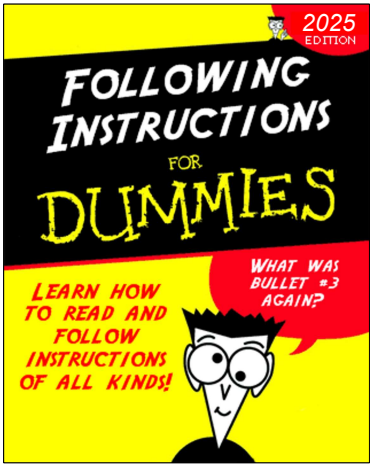
Santa Clara County ARES®/RACES  
Last Updated 29-Dec-2024

ARES and Amateur Radio Emergency Service are registered service marks of the American Radio Relay League Incorporated and are used by permission.  
Copyright (C) 2024 Santa Clara County ARES®/RACES. All rights reserved.

2

## Housekeeping

- Introductions
- Pen/pencil, paper, course materials
- Cell phones
- Side conversations
- Questions
- Breaks **Only water allowed in this room**  
**No food or other drinks**
- Restrooms
- In case of emergency
- **PARKING – move at first break if not parked across the street**



Copyright (C) 2024 Santa Clara County ARES®/RACES. All rights reserved.

3

At the start of class you will be assigned a student number for the class exercises reviewing the homework.

Please complete the homework before coming to class.

Copyright (C) 2024 Santa Clara County ARES®/RACES. All rights reserved.

4

## Why Are We Using Radios Today

- We will practice using Tactical Calls and our FCC Call Signs during class discussions today.
- This will help build muscle memory for the correct way to use the radio.
- The instructors Tactical Call is Instructor, Yours is Student XX.
- To ask a question use your radio and say “Instructor, this is Student XX.
- The instructor will call you back by your Tactical Call.
- Ask your questions and end with your FCC Call Sign.
- If the Instructor asks you to respond to a question, reply with your Tactical Call, give your answer, and end with your FCC Call Sign.

Copyright (C) 2024 Santa Clara County ARES®/RACES. All rights reserved.

5

## Fictitious Examples Used Today

- W6XRL4: Herman Munster
  - Father in 1960's sitcom "The Munsters"
  - Was an aspiring amateur radio operator
  - Call sign: W6XRL4
- This is not a real call sign but we will treat it that way for our class today.



Copyright (C) 2024 Santa Clara County ARES®/RACES. All rights reserved.

6

## Value Add

Question:

You've got your license and a radio.

What value do you (could you) add to a planned event or emergency incident?

Copyright (C) 2024 Santa Clara County ARES®/RACES. All rights reserved.

7

## Learning Objectives



At the end of this two-part course, you should be able to:

- Describe the role of a field operator, including
  - Served agency needs, field assignment types, SCCo ARES/RACES credentialing system
- Explain and perform basic safety procedures
- Properly execute an assignment, including
  - Mobilization, selecting equipment, field operations, dealing with problems, demobilization
- Understand and use field operations checklists

Copyright (C) 2024 Santa Clara County ARES®/RACES. All rights reserved.

8

## Agenda



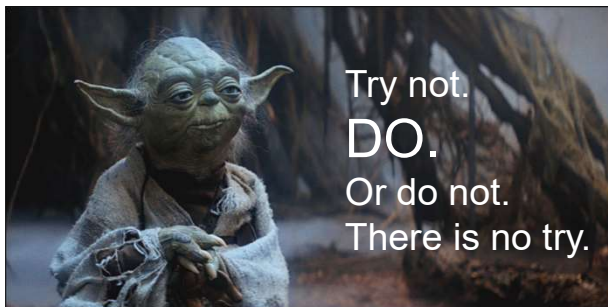
- Mastering Field Communications
- Supporting Our Served Agencies
- Field Communications Assignments
- Credentials
- Safety
- Simulated deployment
  - Mobilization
  - Setting up a field station

The second class will continue with:

- Type III Field Equipment, Type II Field Equipment, On Site Operations, Traffic Types, Advanced Techniques, Dealing With Problems, Demobilization, Checklists

Copyright (C) 2024 Santa Clara County ARES®/RACES. All rights reserved.

9



## Mastering Field Communications

Be an expert at field radio communications

15m

Copyright (C) 2024 Santa Clara County ARES®/RACES. All rights reserved.

10

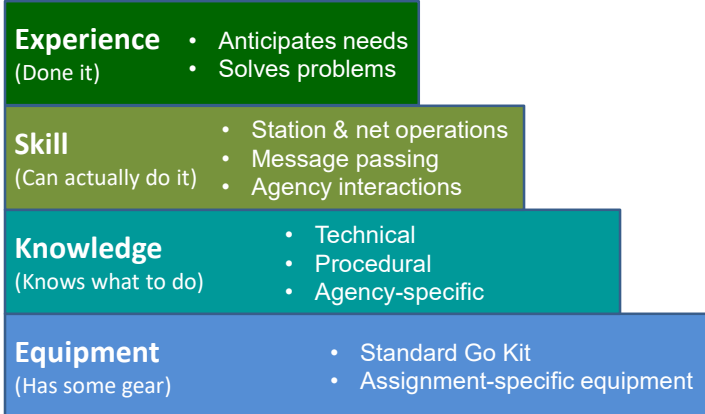
## What Does It Take To Be A Great Field Communicator?

- Merriam-Webster says:
  - com-mu-ni-cate: to transmit information, thought, or feeling so that it is satisfactorily received or understood
- Just about anyone can do the first part
  - ... transmit information, thought, or feeling ...
- The second part is the hard part!
  - ... so that it is satisfactorily received or understood
- What does it take to do that really well? (And why should we?)

Copyright (C) 2024 Santa Clara County ARES®/RACES. All rights reserved.

11

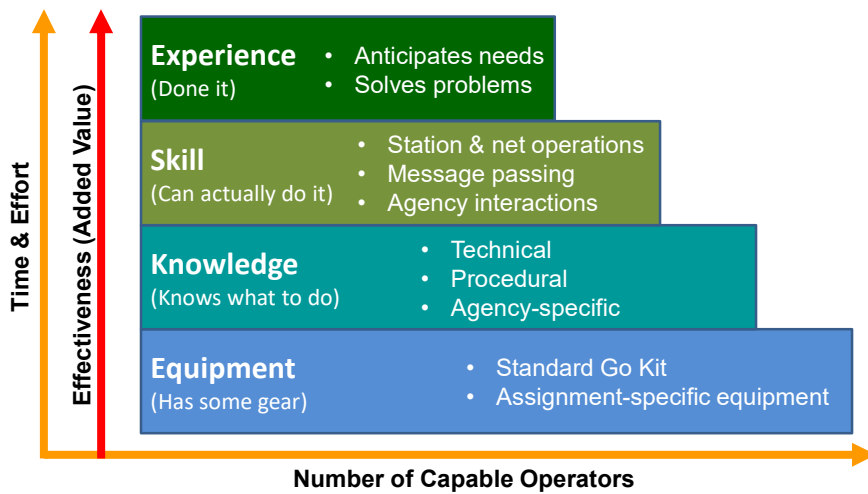
## Components of Field Communications



Copyright (C) 2024 Santa Clara County ARES®/RACES. All rights reserved.

12

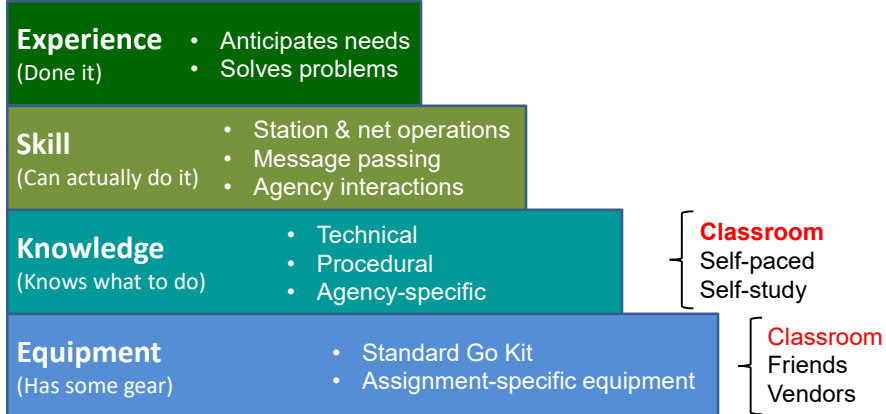
## Components of Field Communications



Copyright (C) 2024 Santa Clara County ARES®/RACES. All rights reserved.

13

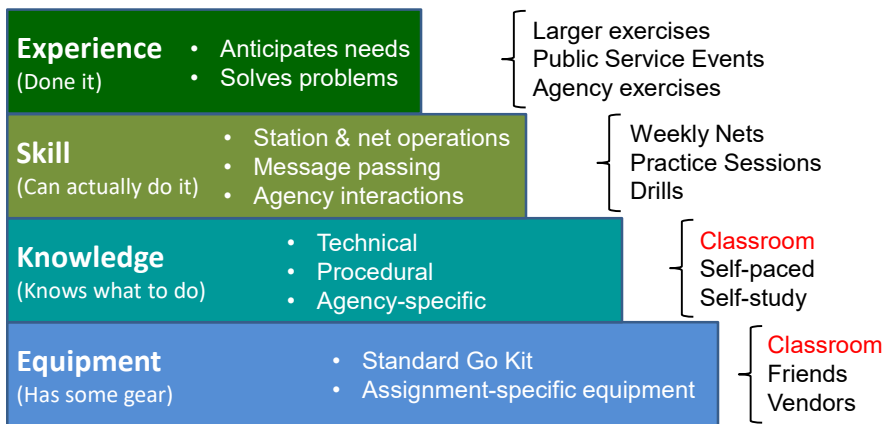
## Learning Field Communications



Copyright (C) 2024 Santa Clara County ARES®/RACES. All rights reserved.

14

## Learning Field Communications

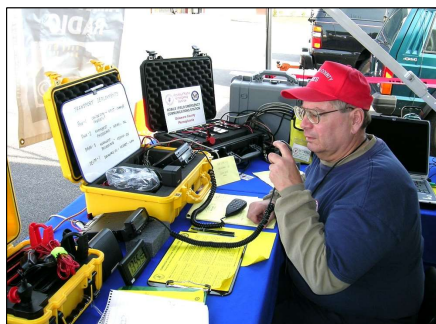


It takes time. The more you participate, the better you become!

Copyright (C) 2024 Santa Clara County ARES®/RACES. All rights reserved.

15





## Supporting Our Served Agencies

To serve them well, we must understand their needs

15m

Copyright (C) 2024 Santa Clara County ARES®/RACES. All rights reserved.

16

## Amateur Radio Support for Agencies

- In a disaster, communications is the #1 problem!
- We can help with:
  - Communications Capability
    - Create the capability where it doesn't normally exist
    - Provide backup capability where existing systems have failed
  - Information collection and dissemination



Copyright (C) 2024 Santa Clara County ARES®/RACES. All rights reserved.

17

**The key difference between communications for a served agency**

(such as at a public service event or emergency incident)

**and other amateur radio activities**

(such as contesting, DXing, “talk nets”, etc.)

is ...

**We operate on the served agency’s terms:**

- **Can include mission critical information**  
(potentially involving threats to life and property)
- **Handled in the manner that they need it**  
(their content, their format, their priority, their procedures, their locations, ...)

Copyright (C) 2024 Santa Clara County ARES®/RACES. All rights reserved.

18

## Doing Business on Served Agency’s Terms

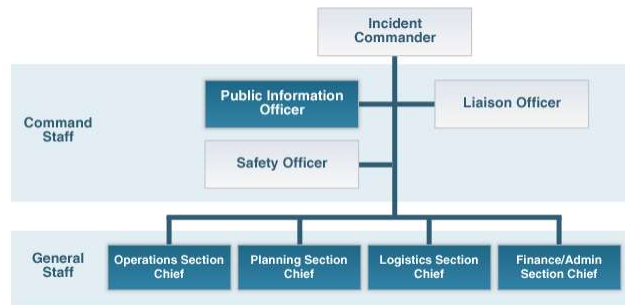
- **Disaster Service Worker Program**
  - Worker’s compensation for injury; limited liability protection
  - If properly activated, supervised and working as assigned and trained
- **ICS/SEMS/NIMS Training**
  - ICS: Incident Command System
  - SEMS: Standardized Emergency Management System
  - NIMS: National Incident Management System
- **Forms**
  - ICS: 205, 211A, 213, 214, 309, ...
  - Status: Jurisdiction Status, Shelter Status, Med Facility Status
  - Resources: 213RR, Med Resource Request, RACES Mutual Aid Req.
- **Agency-specific Procedures**
  - Paperwork, access, credentials, systems, ...

Copyright (C) 2024 Santa Clara County ARES®/RACES. All rights reserved.

19

## ICS – Incident Command System

- Born out of management challenges of rapidly moving wildfires in 1970s
- Any size/kind of incident, common management structure & terminology, logistical and administrative support, cost effective
- Messages are usually addressed to positions, not individuals

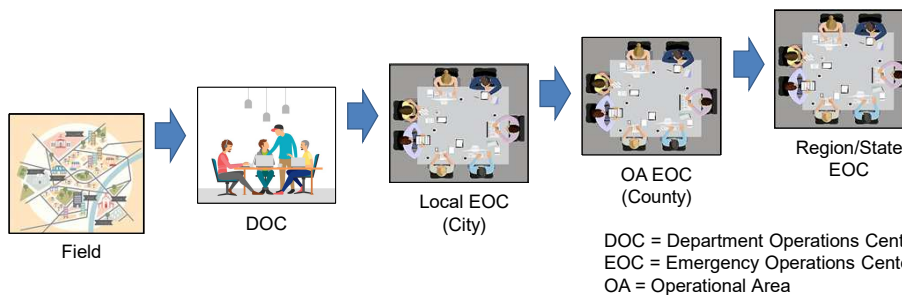


Copyright (C) 2024 Santa Clara County ARES®/RACES. All rights reserved.

20

## SEMS – Standardized Emergency Management System

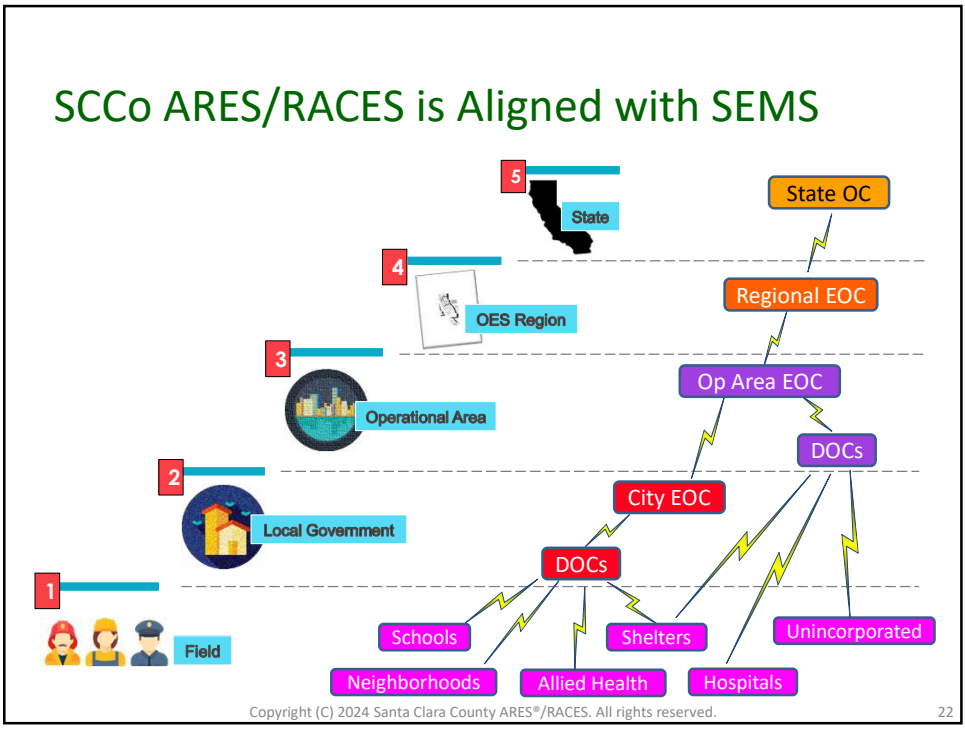
- California specific
- Born out of coordination challenges of 1991 East Bay fires
- Improve coordination of state, local response in CA
- To be effective, know the communications flow in SEMS
  - What info? What format? Which ICS positions?



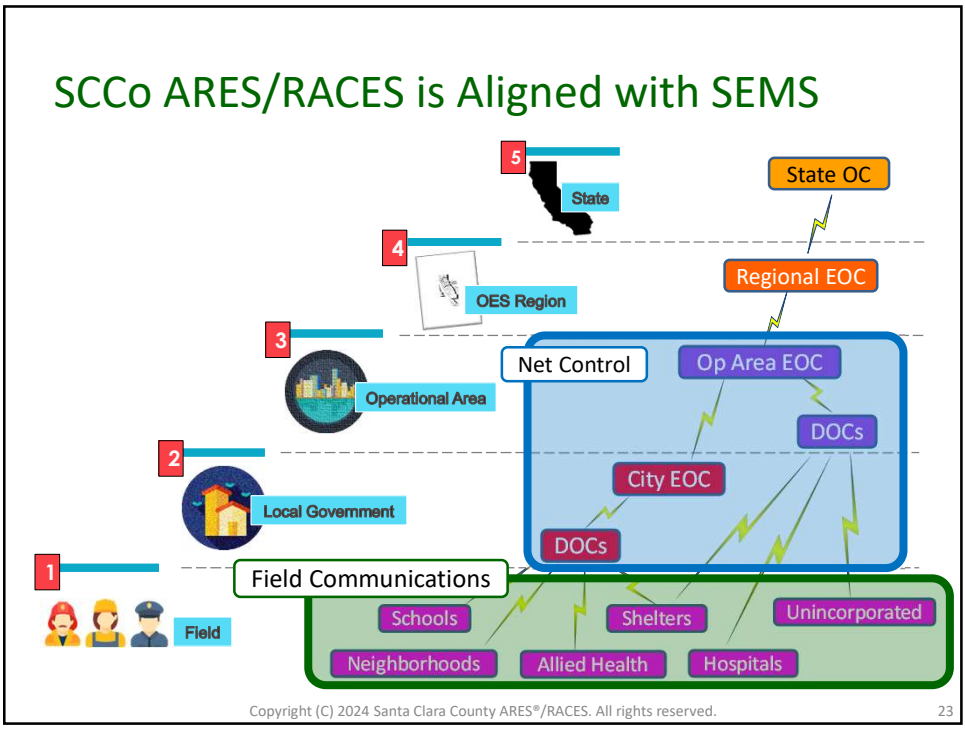
Copyright (C) 2024 Santa Clara County ARES®/RACES. All rights reserved.

21

### SCCo ARES/RACES is Aligned with SEMS



### SCCo ARES/RACES is Aligned with SEMS



## Agency-aligned Communications

- General ICS Forms
  - ICS 213 Message Form
  - EOC 213RR Resource Request
  - ICS 309 Communications Log
- Status Forms
  - WebEOC Shelter Status
  - WebEOC Jurisdiction Status
- Allied Health Forms
  - Allied Health Facility Status
- Hospital Forms
  - EMResource HAvBed Report
  - WebEOC Medical Facility Status
- Local
  - RACES Mutual Aid Request
  - Damage assessment

The screenshot displays the ICS 309 Communications Log interface. At the top, it shows the 'MESSAGE FORM' with fields for Origin (Santa Clara County EOC Resource Request Form 213RR) and Destination (Santa Clara OA Jurisdiction Status). Below this, there are sections for 'COMMUNICATIONS LOG' and 'LOG'. The 'LOG' section contains a table with columns for Time, From, To, Msg ID, Local ID, and Subject. The table lists various messages, including those related to 'Santa Clara County EOC Resource Request Form 213RR', 'Allied Health Status Report Short Form (BEOC-R)', and 'EMResource HAvBed Report'.

Copyright (C) 2024 Santa Clara County ARES®/RACES. All rights reserved.

## How We Prepare For Working With Agencies

- Training: ICS/SEMS/NIMS and our own training classes
  - IS-100, IS-200, IS-700, G606 (SEMS), and this class
- Organizational structure (follows SEMS Model)
  - Cities > County > Region > State
  - Field Communications > Net Control
- Our own exercises follow ICS/SEMS structure
  - Command and general staff
  - Documentation (ICS-205, ICS-211, ICS-214, ICS-309, After Action Report (AAR, ...))
- Our own planned events follow ICS/SEMS
  - DSW activation, supervision
  - ICS structure, plain English, ICS forms
- Participation in agency exercises and events
  - Yellow Command, Statewide Medical Health, Golden Eagle, various local events...

**We take every opportunity to train and practice how our agencies work**

Copyright (C) 2024 Santa Clara County ARES®/RACES. All rights reserved.



## Field Communications Assignments

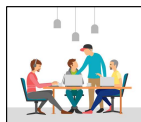
What to expect

20m

Copyright (C) 2024 Santa Clara County ARES®/RACES. All rights reserved.

26

## Example: Field Observation



DOC



EOC

- Provide essential information for situational awareness
  - Earthquake damage (Modified Mercalli Scale), water/flooding level, checkpoints, fire watch, crowd observation, ...
- Requirements: Equipment, Knowledge, Skill, Experience?

13

Copyright (C) 2024 Santa Clara County ARES®/RACES. All rights reserved.

27

## Example: Parades, Races, Festivals

- Provide essential information for situational awareness
  - Checkpoints and rovers provide crowd estimates, report event status, assist with lost children and report important conditions to officials
- Requirements: Equipment, Knowledge, Skill, Experience?

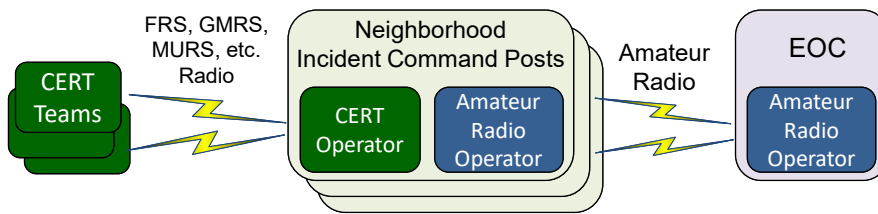


Copyright (C) 2024 Santa Clara County ARES®/RACES. All rights reserved.

28

## Example: Neighborhoods / Local EOC

- Community Emergency Response Teams report to neighborhood command posts (CPs); CP reports to city EOC
  - Damage assessments, team status
- Amateur Radio: Neighborhood CP to EOC
- Requirements: Equipment, Knowledge, Skill, Experience?

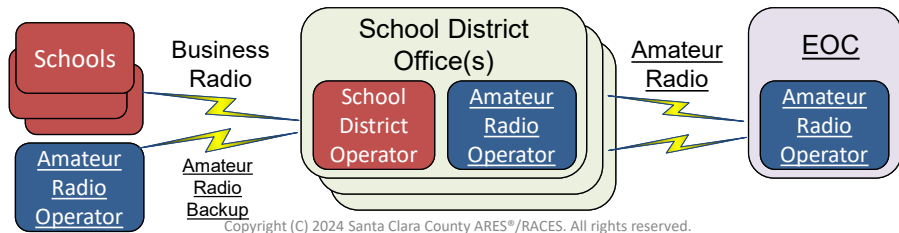


Copyright (C) 2024 Santa Clara County ARES®/RACES. All rights reserved.

29

## Example: Schools / Local EOC

- Schools report to school district; school districts report to the city EOC
  - Status (damage, injuries, ...), resource requests, H&W
- Amateur Radio:
  - Individual schools to school districts (backup)
  - School districts to City EOC (primary or backup)
- Requirements: Equipment, Knowledge, Skill, Experience?

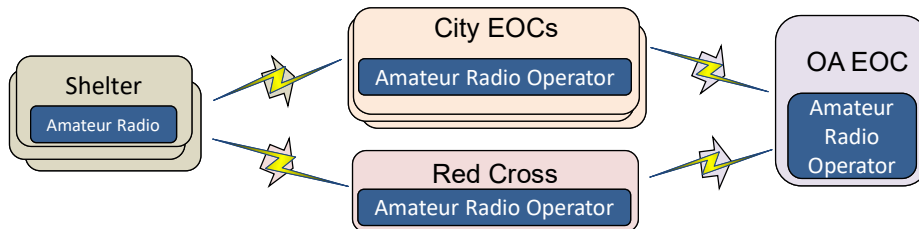


Copyright (C) 2024 Santa Clara County ARES®/RACES. All rights reserved.

30

## Example: Shelters

- Shelters may be managed by a local jurisdiction or by a non-governmental organization (NGO) such as the Red Cross. Shelter status and other municipal issues are reported to the jurisdiction EOC. Shelter resource support may come from the NGO.
  - Shelter status, resource requests, municipal issues, H&W
- Amateur Radio:
  - Shelter to (City EOC and/or NGO) to OA EOC
- Requirements: Equipment, Knowledge, Skill, Experience?



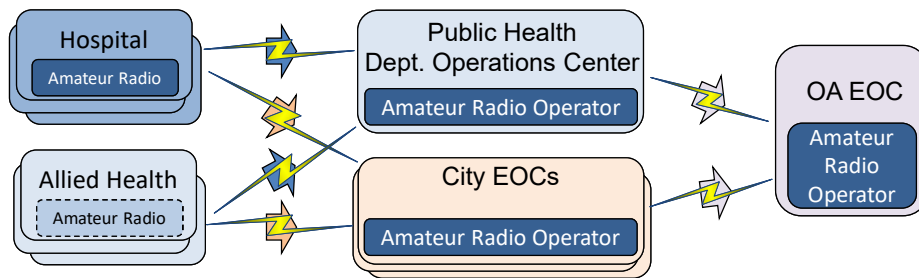
Copyright (C) 2024 Santa Clara County ARES®/RACES. All rights reserved.

31



## Example: Hospitals, Allied Health

- Medical info is reported to the PHDOC; municipal issues are reported to the city EOC; OA EOC supports both
  - Bed status, facility status, resource requests, municipal issues, H&W
- Amateur Radio:
  - Hospital to (PHDOC or City EOC) to OA EOC
  - Support for Allied Health facilities is new
- Requirements: Equipment, Knowledge, Skill, Experience?

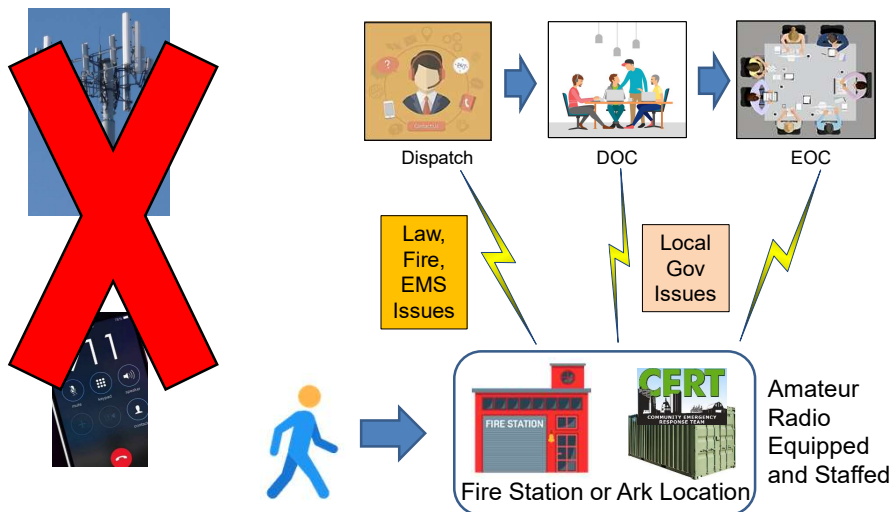


Copyright (C) 2024 Santa Clara County ARES®/RACES. All rights reserved.

32

## Example: Alternate 911

Requirements: Equipment, Knowledge, Skill, Experience?



Copyright (C) 2024 Santa Clara County ARES®/RACES. All rights reserved.

33

### Example: Distributing Public Info

The diagram illustrates the distribution of public information by a Public Information Officer (PIO). The PIO is shown as the central point, with arrows pointing to three channels: Broadcast Media, Social Media, and Amateur Radio. Broadcast Media is represented by a photo of emergency responders at a press conference. Social Media is represented by icons for YouTube, Twitter, Instagram, LinkedIn, Snapchat, and Facebook. Amateur Radio is represented by a photo of a person operating a radio station. A yellow box highlights the question: "What about those who don't have access or locations where communications systems are damaged?". Below this, two bullet points provide additional context: "Post info at: schools, shelters, neighborhoods, wherever needed..." and "Requirements: Equipment, Knowledge, Skill, Experience?".

**PIO**  
Public Information Officer

Broadcast Media

Social Media

What about those who don't have access or locations where communications systems are damaged?

Amateur Radio

- Post info at: schools, shelters, neighborhoods, wherever needed...
- Requirements: Equipment, Knowledge, Skill, Experience?

Copyright (C) 2024 Santa Clara County ARES®/RACES. All rights reserved. 34

### Amateur Radio Operator as Coach

- We exist to serve these agencies (government and non-government), not manage or direct them
  - We are NOT there to tell them what to do or how to do it
- But most agency message originators/recipients don't know how to utilize amateur radio
  - They simply haven't practiced with us before (or in a long time)
  - May not be familiar with paper forms (usually use web-based system)
  - May not know our communications methods
  - May not know how/where to address messages
  - May not know what to do with paper form when received
- We can help by acting as a coach
  - But be VERY careful to only suggest, not tell

Copyright (C) 2024 Santa Clara County ARES®/RACES. All rights reserved. 35

## How We Make Personnel Assignments

- We know the specific training, equipment, knowledge, experience and operating skill level needed to complete each type of assignment correctly
- But how do we know who has those combinations of skills?
- How do we pick who to activate for any given assignment?

Copyright (C) 2024 Santa Clara County ARES®/RACES. All rights reserved.

36



## Credentials

Different assignments require different skills.  
Who is qualified for a given assignment?

15m

Copyright (C) 2024 Santa Clara County ARES®/RACES. All rights reserved.

37

## Resource Assignment Challenges

- Very different types of assignments:
  - Flood watch:
    - Monitor and report on water levels at a creek location
  - School, shelter, hospital, allied health facility:
    - Formal message passing
  - Larger or more remote locations, DOCs, ...
    - Formal message passing on two nets simultaneously
  - Event/Incident main point of contact
    - Provide field communications for an entire event/incident
- Who should we assign?
- How do we know they can complete the assignment correctly?  
How do we know they have the appropriate equipment?

Copyright (C) 2024 Santa Clara County ARES®/RACES. All rights reserved.

38

## Resource Typing Is The Answer

- Incident Command System (ICS) resource “Types” identify capability
  - Applies to equipment (fire apparatus, aircraft, ...)
  - Applies to personnel roles (incident commander, section chief, ...)
- SCCo ARES/RACES credentials: four resource types across four roles
  - Type IV requires sign-off by city Radio Officer
  - Types III, II, I require operational evaluation by peer evaluator
  - Each resource type includes operator and equipment appropriate for the role

Type	Skill Level	Field	Net Control	Packet	Shadow
I	Specialist	Field I	Net Control I	Packet I	Shadow I
II	Advanced	Field II	Net Control II	Packet II	Shadow II
III	Independent	Field III	Net Control III	Packet III	Shadow III
IV	Basic	Type IV Communicator			
V	Unknown	Licensed Amateur Radio Operator (w/DSW)			

Copyright (C) 2024 Santa Clara County ARES®/RACES. All rights reserved.

39

## Communicator Type IV

C4

- Capabilities
  - Standard SCCo ARES/RACES go kit
  - Respond anywhere in jurisdiction
  - Basic net usage procedures
  - Simple damage/status reports
  - Handle low traffic levels
- Assignment Types
  - Parades, festivals, races
  - Checkpoints, flood watch
  - Damage surveys
  - CERT team support (simple reports)

Copyright (C) 2024 Santa Clara County ARES®/RACES. All rights reserved.

40

## Field Operator Type III

F3

- Capabilities
  - Type IV plus ...
  - Fully independent operator
    - Has the equipment, training, knowledge, skill, and experience to handle basic assignments correctly, without the need for assistance or coaching
  - 3<sup>rd</sup> Party traffic
  - Low to medium traffic volume
- Typical Assignments
  - CERT team support (complex reports)
  - Schools, shelters
  - Jurisdiction DOC/EOC (smaller, not for net control)
  - Hospitals
  - Allied health facilities
  - Fire stations

Copyright (C) 2024 Santa Clara County ARES®/RACES. All rights reserved.

41

## Field Operator Type II & Type I

- Field Operator Type II = Advanced Operator
  - Capabilities
    - Type III plus ...
    - Medium to high traffic volume, multiple nets
    - Cross-band repeat
    - Standard Go Kit + mobile (25+W) radio, antenna, mast, coax, ...
  - Assignments
    - Larger, more critical, or more remote sites
    - Help plan small events
- Field Operator Type I = Specialist Operator
  - Type II plus
  - Extended operations (72+ hours)
  - Most critical and complex assignments
  - Principal interface for planning, design, set-up, operations

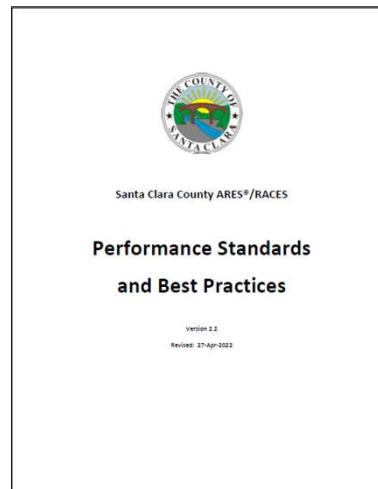


Copyright (C) 2024 Santa Clara County ARES®/RACES. All rights reserved.

42

## Credentialed Operators Follow Performance Standards and Best Practices

- Covers all performance aspects of operating in ARES/RACES
  - Professionalism and Training
  - Communications Technique
  - Safety
  - Methods and Procedures
  - Equipment
  - Documentation
- Applies to all operators
- Standard used for credential performance evaluations



<http://www.scc-ares-races.org/operations.shtml>

Copyright (C) 2024 Santa Clara County ARES®/RACES. All rights reserved.

43

## Credentialed Operators Come With Standard Go Kit

- 2-hour Carry Kit
  - Keep it nearby
- 12-hour Go Kit
  - Needed for any deployment
- Extended Kit
  - 72+ hours
- Includes:
  - Required
  - Recommended
  - Optional
- More on equipment later ...

Santa Clara County ARES®/RACES Go Kit Checklists		Revised: 29-Apr-2022	
<b>Legend:</b>			
X = Required (must have in kit at all times)			
R = Recommended (if any useful on many assignments)			
O = Optional (useful on some assignments)			
<b>2-Hour Carry Kit</b>			
<b>Purpose:</b> To be kept nearby at all times for immediate (within minutes) communication of damage reports during Resource Net Level 1 ops. Also used to remain in contact with Resource Net Level 2 while returning home to retrieve 12-hour Go-Kit.			
<b>Items:</b>			
X	2m/70cm dual-band radio	R	Small backpack, vest, chest harness or other similar method for carrying HT while operating portable
	• HT recommended (min. 5W on 12V/2.5W on batt)	R	Radio user manual or cheat sheet
	• Mobile 25W optional (if vehicle will not be far away)	R	Headset (strongly recommended for VFO per ear) w/ inline, handswitch or footswitch PTT
	• Programmed with Resource Net frequencies	R	Battery for 12-hour operation (20 Ah min., 28 Ah rec.)
X	Charged batteries for 2-3 hours operation	R	Power cord adapters – connect mobile to power sources:
X	2m/70cm dual-band mobile antenna (mag mount, window mount or existing mobile antenna)		• Powerpoint
X	Current SCCo Voice Frequency List		• Cigarette lighter socket
X	Modified Ventral (Vite-Mike) sock		• Vehicle battery terminals
X	Notepad / pen	R	Powerpoint splitter or fuse distribution panel
X	Cigarette lighter adapter	R	Spare fuses
X	Emergency County and city telephone contact list	R	Cable adapter: connect mobile radio to coax
R	Cell phone	R	Min. 25' add'l feet of 50 Ohm coaxial cable w/barrel conn.
R	Water (16 oz)	R	Extension cord: 3-wire, 24 ft., multi-outlet
		O	Extension cord: 3-wire, 50-100 ft.
		<b>Antennas:</b>	
		X	Cable adapters: connect coax to existing antenna (j.d.)
			• BNC plug (male) & BNC socket (female)
			• UHF plug (PL-259) & UHF socket (SO-239)
			• N-type plug (male) and N-type socket (female)
		X	2m/70cm dual-band magnetic or window mount antenna
		R	2m/70cm high gain HT antenna
		R	2m/70cm dual-band portable case antenna (e.g. roll-up I-pole or other)
		R	Portable mast (revels antenna base min. 10 ft.)
		R	Typical or other self-supporting base for mast
		R	Window clip antenna mount (for non-metallic vehicles)
		<b>Packet Equipment:</b>	
		O	Laptop with Outpost and PacketForms installed
		O	USB flash drive (i.e. USB key)
		O	THC (may be hardware, software or built into radio)
		O	Cable: THC to radio; THC to PC
		O	Shade cover for display
		O	Portable printer
		O	Extra station can operate for min. 1 hr on battery
		<b>Other Communications Gear:</b>	
		R	Car phone & charger and/or cigarette lighter adapt.
		O	ARES/RACES Radio
		O	Satellite phone
		<b>Tools:</b>	
		R	Duct tape
		R	Electrical tape
		R	Nylon Tie-Wings/wire ties
		R	Utility knife
		R	Small multi-tool or tool kit
Santa Clara County ARES®/RACES		Page 1 of 4	

## Earning a Credential

- Equipment
  - Standard 12-hour go kit, plus more as appropriate
- Training
  - SCCo ARES/RACES courses: technical and role-specific
  - ICS/SEMS/NIMS courses
- Knowledge
  - Able to explain key concepts (general and role-specific)
- Experience
  - Participation in nets, events, incidents
- Performance
  - Peer-reviewed, based on Performance Standards
  - Conducted at regular events (no special circumstances needed)

## Resource Assignments By Type

- Very different types of assignments:

C4

– Flood Watch

- Monitor and report on water levels at a creek location

F3

– School, shelter, hospital, allied health facility

- Formal message passing

F2

– Larger or more remote location, DOCs, ...

- Formal message passing; operate two nets simultaneously; cross-band

F1

– Event/Incident main point of contact

- Organize field communications for an entire event/incident

## Mutual Aid Communicator (MAC) Endorsement



- An amateur radio operator that meets certain minimum requirements and is willing to help outside own city/agency when needed
  - Only called upon when not needed within own city/agency
- Must hold at least Type IV Credential:
  - Encouraged to earn role-specific credentials (Type III, II, I)
- Some additional administrative requirements
  - County DSW Registration
  - Background check



## Other Endorsements



- County EOC Radio Operator (ERO)
  - Work in the County EOC Radio Room as Net Control or Packet operator
- County Fire Station Operator (FRO) [pending]
  - Work in a County Fire Station as a Field or Packet Operator
- County EOC Races Unit Leader (RUL)
  - Work in the County EOC as the RACES Unit Leader
- More information on endorsement can be found at:
  - <https://www.scc-ares-races.org/credentials>

## Credentialing Program Information

- <https://www.scc-ares-races.org/credentials>
  - Documentation
    - Credentialing Program Handbook
    - Performance Standards and Best Practices
  - Forms
    - Credential and Endorsement Forms
    - Approved Activity Forms
  - Training Guidance – required classes
  - Program Management & Support
    - Input and Guidance
    - Submitting Records
    - Program Manager

Santa Clara County ARES/RACES	
<b>Herman Munster</b>	
<b>W6XRL4</b>	
<b>Credentials:</b>	
Evaluator	E2
Field Comms	F1
Net Control	N3
Packet Comms	P2
Shadow Comms	S1
<b>Endorsements:</b>	
Mutual Aid Comm	MAC
Fire Station Radio Oper	FRO
EOC Radio Operator	ERO
EOC RACES Unit Lead	RUL
Expires: Jan 31, 20##	

## Value Add – Round Two

**Question:**

What value do you (could you) add to a planned event or emergency incident?

## Value Add – Round Two

**Question:**

What value do you (could you) add to a planned event or emergency incident?

**Answer:**

For credentialed operators ...

The **equipment, knowledge, skill** and **experience** necessary to provide the **communications capability** needed by served agencies to **collect and disseminate information** in **the manner they need it** (content, format, priority, procedures, locations, ...).



## Safety

Safety is Everyone's Responsibility

7m

Copyright (C) 2024 Santa Clara County ARES®/RACES. All rights reserved.

52

## Personal Safety

- Don't accept an assignment until you and your family are safe
- On assignment, actively & continually assess personal safety
  - Maintain awareness of surroundings and potential for safety issues
- Call 911 or other official emergency number if fire, medical or public safety issue exists
- Wear proper attire, even for drills, public service events
  - Vest (lime yellow, ANSI Class 2)
  - Personal attire
    - Long pants (unless otherwise authorized)
    - Sturdy footwear with closed toe, no sandals
    - Protection from the elements (long sleeves, hat, ...)
  - Other personal protective equipment (PPE) as needed (gloves, safety glasses, hearing protection, ...)

Copyright (C) 2024 Santa Clara County ARES®/RACES. All rights reserved.

53

## Antenna Safety



- LOOK UP when placing antennas
- Assume all overhead cables are energized and dangerous
- Location, location, location
  - No possibility to contact power lines, even if the support should fail
- Take care with “launchers”
  - When using slingshots, arrows, or power-assisted antenna launchers to string up the antenna, be sure no one is in range before you launch, and there are no hidden or unseen power lines.
- Use a safety spotter
  - Nobody can do the work alone and assess safety distances. A safety spotter’s only job it to keep people and equipment safely away from power lines.

Copyright (C) 2024 Santa Clara County ARES®/RACES. All rights reserved.

54

## RF Safety Evaluation

- Your license requires an RF Safety Evaluation. The FCC rules changed and existing stations had until May 03, 2023 to comply.
- Controlled vs. uncontrolled environment: you (or other hams) and your household vs. unsuspecting public bystander
- Example scenarios from ARRL rf-exposure-calculator (146 MHz, FM, duty cycle is 5 min Tx / 10 min Rx), minimum safe distances shown:
  - Mobile radio, antenna on push-up mast:
    - 25W, 25 ft coax, total gain 3 dB
    - controlled: 3 ft.    uncontrolled: 4 ft. 3 in.
  - Car mag mount antenna (metal roof): 50W, total gain 2dB
    - controlled: 3ft. 9 in.    uncontrolled: 5 ft. 5 in.
- ARRL RF exposure page and calculator
  - <https://www.arrl.org/rf-exposure>
  - <https://www.arrl.org/rf-exposure-calculator>
- See the Antenna Class Slides for more details
- Will become part of Credential Evaluations

Copyright (C) 2024 Santa Clara County ARES®/RACES. All rights reserved.

55

## Human Factors



- Both fatigue and stress can result in
  - Poor communications skills; slower task performance
  - Difficulty concentrating and thinking clearly; forgetfulness
  - Inattention to important details
- Avoidance
  - Work at moderate pace as applicable to the assigned task
  - Switch jobs with partner; take periodic breaks
  - Adjust duties to alternate between heavy and light duty tasks
  - Look for signs of impairment in your team-mates

Copyright (C) 2024 Santa Clara County ARES®/RACES. All rights reserved.

56

## Environment



- Sun, heat, cold, rain, wind, lightning
  - Dress appropriately; use layers
    - Wool and synthetics are best for cold & wet situations
    - Protect exposed skin from sun, wind, cold
  - Stay hydrated
    - Cool liquids in the heat, warm liquids in the cold
  - Use protective shelter (existing or bring it with you)
    - Pop-up tents/shelters are always in need at drills, public service events
      - Use weights to keep pop-ups secure in the wind (suggest 40 lbs. per leg)
    - For lightning: move indoors, disconnect antennas
  - Watch for signs of medical problems related to heat or cold in yourself and others

Copyright (C) 2024 Santa Clara County ARES®/RACES. All rights reserved.

57

## Disasters



- Floods, land/mudslides, fires, earthquakes
  - Do not enter affected area
    - Do not proceed past an active fire line
    - Do not enter water deeper than six inches, flowing water, flooded underpass
    - Do not try to cross land/mudslide, even after it stops moving
    - Do not enter suspect structures
  - Increase vigilance, alert level near affected areas
    - Wind direction can shift fire dramatically and cut off escape
    - Flash flooding can occur in ... a flash; know where high ground is
    - Fire followed by rain will likely yield land/mudslides; stay away
    - Be alert for smell of natural gas or hissing sounds after earthquakes, slides

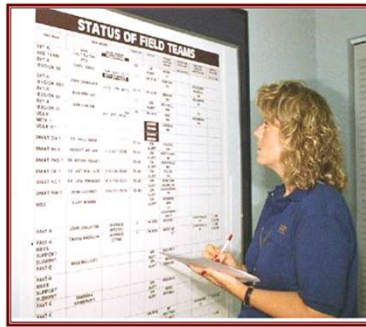
Copyright (C) 2024 Santa Clara County ARES®/RACES. All rights reserved.

58

## Simulated Deployment

Copyright (C) 2024 Santa Clara County ARES®/RACES. All rights reserved.

59



## Mobilization

Field Operations

(Review material from the Fundamentals Class)

45m

Copyright (C) 2024 Santa Clara County ARES®/RACES. All rights reserved.

60

## Review: Mobilization (Covered in Fundamentals Class)

- Alerting
- Resource Net Levels 1,2,3
- Assignment
- Activation
- Travel
- Arrival
- Sign In

Copyright (C) 2024 Santa Clara County ARES®/RACES. All rights reserved.

61

## Review: Alerting

- Definition of alerting:
- Alerting Types
  - Self-alerting
    - Examples:
  - Non-self-alerting
    - Examples:
  - Both
    - Examples:
- Alerting Methods
  - Examples:

Copyright (C) 2024 Santa Clara County ARES®/RACES. All rights reserved.

62

## Review: Resource Net Level 1

- Trigger:
- Purpose:
- Repeaters/Frequencies:
- Activity:
- Example report:

Copyright (C) 2024 Santa Clara County ARES®/RACES. All rights reserved.

64



## Review: Resource Net Level 2

- Trigger:
- Purpose:
- Repeaters/Frequencies:
- Activity:
- Example:

Copyright (C) 2024 Santa Clara County ARES®/RACES. All rights reserved.

66

## Review: City Nets

- Trigger:
- Purpose:
- Repeaters/Frequencies:
- Activity:
- Example:

Copyright (C) 2024 Santa Clara County ARES®/RACES. All rights reserved.

68

## Review: Resource Net Level 3

- Trigger:
  - 1.
  - 2.
- Purpose:
- Repeaters/Frequencies:
- Activity:
- Example check-in:

Copyright (C) 2024 Santa Clara County ARES®/RACES. All rights reserved.

70

## Review: Assignment

- What type of assignment should you accept?
  1. I \_\_\_\_\_ the assignment
  2. I will be \_\_\_\_ while performing the assignment
  3. I have been properly \_\_\_\_\_ for the assignment
  4. I have the right \_\_\_\_\_ for the assignment
  5. I am \_\_\_\_\_ to go
- What type of assignment should you decline?
- What if you're not ready to accept any assignment?

Copyright (C) 2024 Santa Clara County ARES®/RACES. All rights reserved.

72

## Review: Activation

- When ready to depart, what info does net control need?
  1. I am \_\_\_\_\_ to depart
  2. My \_\_\_\_\_ is: \_\_\_\_\_
  3. My starting \_\_\_\_\_ is <last \_\_\_ digits>
  4. End with your \_\_\_\_\_ \_\_\_\_\_ \_\_\_\_\_
- What key info should you get from net control?
- Begin filling out your ICS-\_\_\_\_\_

Copyright (C) 2024 Santa Clara County ARES®/RACES. All rights reserved.

74

## Exercise: ICS-214 Unit Activity Log

### Did you view the ICS-214 Video Training?

- Assume the time is currently 08:00
- The resource net gives you the following general assignment:
  - Participate in the Field Ops Type III Training Class
  - Use the class location (we'll keep it simple)
  - The event will be from 09:00 to 12:00 today (operational period)
  - The incident/mission/activation number is TC-25-01T
- You depart from home 5 minutes later
  - Your starting odometer is 123
- Start an ICS-214 Unit Activity Log and keep it updated throughout the class

Copyright (C) 2024 Santa Clara County ARES®/RACES. All rights reserved.

76



## Exercise: ICS-214 Unit Log

<b>UNIT LOG</b> ICS 214-SCC ARES/RACES	1. Incident Name and Activation Number	2. Operational Period (Date/Time)	
	<i>Field Ops Type III Training Class</i> <i>TC-25-01T</i>	<i>MM/DD/YYYY</i>	<i>MM/DD/YYYY</i>
3. Unit Name / Tactical Call / Designators		4. Unit Leader (Name, Call Sign, ICS Position)	
		<i>&lt;your name&gt;, &lt;your call sign&gt;</i>	
5. Personnel Roster Assigned			
Name		Call Sign	ICS Position
Home Base/City			
<div style="border: 2px solid red; border-radius: 15px; padding: 10px; width: fit-content; margin: 0 auto;">                 This section only used by team leaders.                  Used when a group of operators are dispatched together.             </div>			
6. ACTIVITY LOG			
Time (24:00)	Major Activities & Events / Occasional Messages (indicate From / To / Msg# / Msg Text)		
<i>08:00</i>	<i>Assignment: attend Field Ops Type III Training Class at &lt;location&gt;</i>		
<i>08:05</i>	<i>Departed home, odometer 123</i>		

Copyright (C) 2024 Santa Clara County ARES®/RACES. All rights reserved.

77

## Example: Resource Net Departure

- Check-in for Public Service Event
  - Assignment, activation number, other details already known
  - Instructions were to check-in when ready to depart
- Example check-in 
  - Identifies and states intended communication (ready to depart)
  - Provides information requested, nothing more, nothing less
  - Ends with call sign, which satisfies FCC and indicates transmission is completed
- Example check-in 
  - Same as above, but
  - Street names are complicated, so he uses "I spell" correctly. Excellent!

Copyright (C) 2024 Santa Clara County ARES®/RACES. All rights reserved.

78

## Travel

- Follow \_\_\_\_\_'s instructions
- Listen and respond promptly to \_\_\_\_\_ & \_\_\_\_\_ checks
- Key safe driving behaviors
  - 
  - 
  - 
  - 
  - Observe “distracted driving” laws
    - Key: wired microphone, mounted radio

Copyright (C) 2024 Santa Clara County ARES®/RACES. All rights reserved.

79

## Example: Resource Net Health & Welfare

- Health and welfare checks usually done in a batch
- Each person called sequentially
- Example batched health & welfare check
  - Both provide location, odometer and end with call sign. Excellent.



Copyright (C) 2024 Santa Clara County ARES®/RACES. All rights reserved.

81

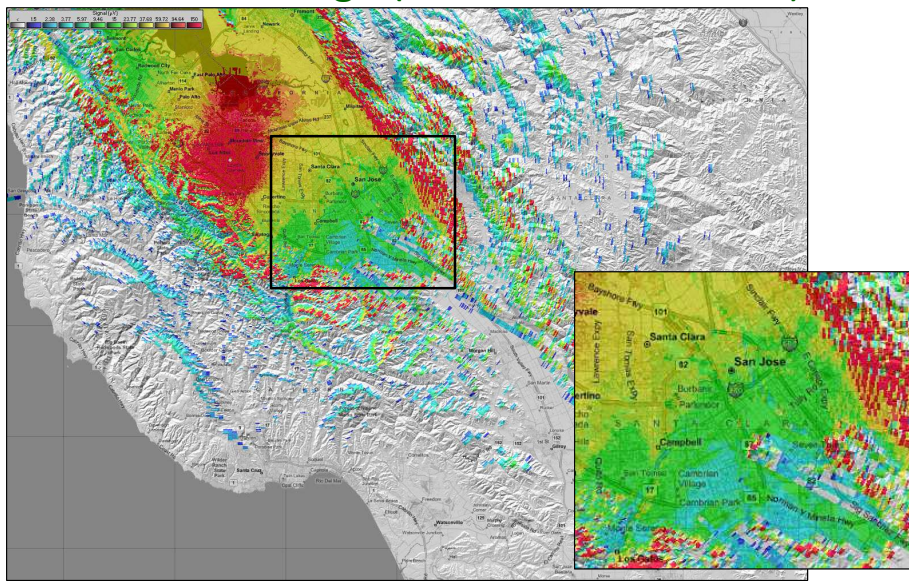
## Resource Net Linked Repeaters

- To cover the entire county, we use three linked repeaters
- Pre-program all of them into your radio
- Know the coverage areas
- Remember to switch to the correct repeater as you drive

Copyright (C) 2024 Santa Clara County ARES®/RACES. All rights reserved.

82

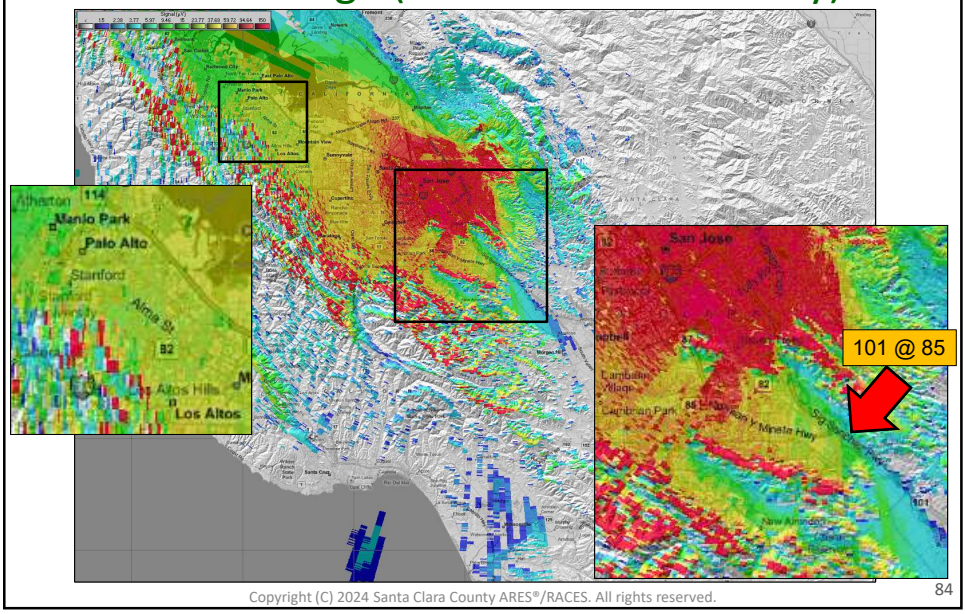
## W6ASH Coverage (Resource Net North)



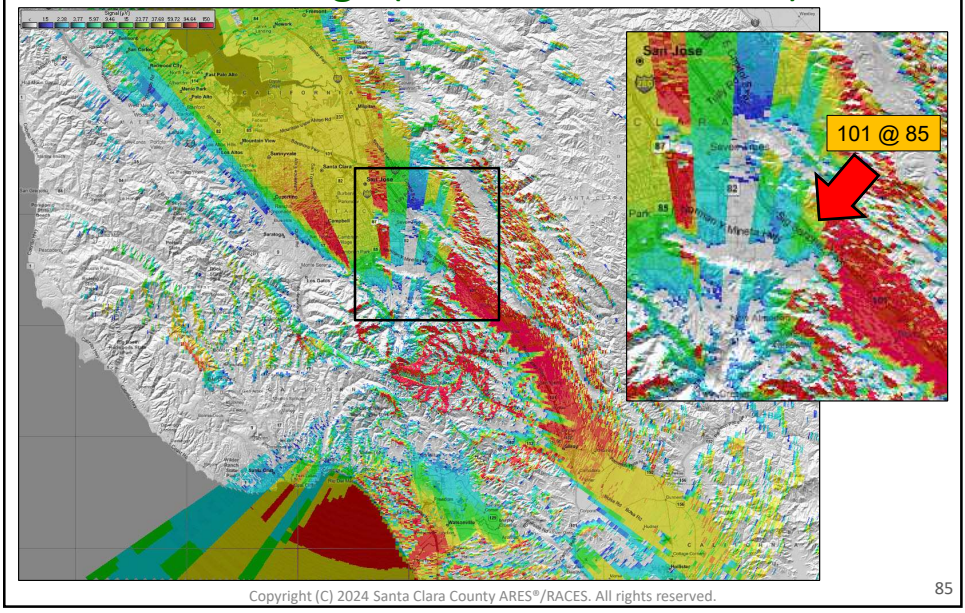
Copyright (C) 2024 Santa Clara County ARES®/RACES. All rights reserved.

83

### AA6BT Coverage (Resource Net Primary)

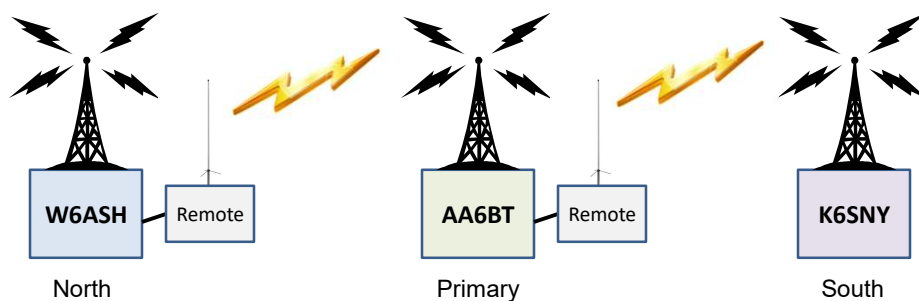


### K6SNY Coverage (Resource Net South)



## Linked Repeaters Exhibit Audio Delays

- Normally, the repeaters used for Resource Net are not linked
- When linked there is a delay -- you need to allow for it
- Max delay when sending from W6ASH to K6SNY (or reverse)



Copyright (C) 2024 Santa Clara County ARES®/RACES. All rights reserved.

86

## Example: Linked Repeater Delay

### MM Report on Resource Net – Level 1

(The same conversation as heard on three linked repeaters.)

K6SNY



AA6BT



W6ASH



Record the call signs as you hear them.

Can you tell who they are?

**IMPORTANT:** After keying up, wait 2 seconds before talking on linked repeaters

Copyright (C) 2024 Santa Clara County ARES®/RACES. All rights reserved.

87



## Arrival at Staging

- Stay in your \_\_\_\_\_
- Update your ICS-\_\_\_\_\_
- Contact resource \_\_\_\_\_
- Provide the following info:
  - I have \_\_\_\_\_ at \_\_\_\_\_
  - My ending \_\_\_\_\_ is <last \_\_\_ digits>
  - I am \_\_\_\_\_ of the \_\_\_\_\_ net and \_\_\_\_\_ into the \_\_\_\_\_ net
  - End with your \_\_\_\_\_
- Then, contact \_\_\_\_\_ net control
- Say:
- Follow \_\_\_\_\_'s \_\_\_\_\_
- If you can't reach the \_\_\_\_\_, then:

Copyright (C) 2024 Santa Clara County ARES®/RACES. All rights reserved.

88

## Exercise: ICS-214 Unit Activity Log

- Assume the time is 08:25 and you have arrived at staging
- Your final odometer is 134
- Update your ICS-214


Copyright (C) 2024 Santa Clara County ARES®/RACES. All rights reserved.

90

## Example: Updated ICS-214

<b>UNIT LOG</b>		1. Incident Name and Activation Number		2. Operational Period (Date/Time)	
ICS 214-SCCo ARES/RACES		Field Ops Type III Training Class TC-25-01T		MM/DD/YYYY MM/DD/YYYY	
				From: 09:00	To: 12:00
3. Unit Name / Tactical Call / Designators			4. Unit Leader (Name, Call Sign, ICS Position)		
			<your name>, <your call sign>		
5. Personnel Roster Assigned					
Name		Call Sign	ICS Position	Home Base/City	
6. ACTIVITY LOG					
Time (24:00)	Major Activities & Events / Occasional Messages (indicate From / To / Msg# / Msg Text)				
08:00	Assignment: attend Field Ops Type III Training Class at <location>				
08:05	Departed home, odometer 123				
08:25	Arrive staging, odometer 134				

## Example: Switch To Staging Net

- Stay in vehicle
- Check out of resource net
  - Same three pieces of info: location, odometer, call sign
  - You: “I have arrived at staging, final odometer 134, checking out, W6XRL4”
  - NC: “W6XRL4, roger”
  - Example: Checking out of resource net 
- Check into incident/event staging net if there is one
  - You: “Staging net control, W6XRL4, I’m at the parking lot, checking in”
  - NC: “W6XRL4 proceed to staging tent”
  - You: “Roger, W6XRL4”
- Proceed according to instructions

## Sign-In

- Locate and sign-in on ICS-\_\_\_\_\_
- If one doesn't exist, then:
- Stay in constant contact on the \_\_\_\_\_ net
- Fill out \_\_\_\_\_
- Get/attend a \_\_\_\_\_

Copyright (C) 2024 Santa Clara County ARES®/RACES. All rights reserved.

93

## What If There Is No Staging Location?

- In some cases, you may be a single resource going directly to a specific location where there is no need for staging
  - Example: you are assigned to go directly to a specific shelter or hospital or command post
- The same activities that we are going to discuss would apply
  - You will likely have paperwork to fill out
  - You will likely get a more detailed assignment briefing
- The main difference will likely be
  - You will likely be told to contact the local team directly on their tactical net instead of a separate staging net
- If you are the first one there
  - You will create the paperwork (ISC-211 Check-In Form)
  - You will set up the tactical net, ...

Copyright (C) 2024 Santa Clara County ARES®/RACES. All rights reserved.

95

## Exercise: Sign-In

- Assume the time is 08:30; you have arrived at <class location>
- Sign in on the ICS-211
- Assume you are the first person to arrive, so create an ICS-211
- You should know your City/Agency Code

American Red Cross	ARC	Mountain View, City of	MTV
Campbell, City of	CBL	NASA/Ames	NAM
Cupertino, City of	CUP	Palo Alto, City of	PAF
Gilroy, City of	GIL	San Jose, City of	SJC
Hospitals (all SCCo) & PHDOC	HOS	San Jose Water Co	SJW
Loma Prieta Region (Santa Cruz Mtns.)	LMP	Santa Clara, City of	SNC
Los Altos, City of	LOS	Santa Clara County	XSC
Los Altos Hills, Town of	LAH	Santa Clara Valley Water District	VWD
Los Gatos, Town of / Monte Sereno, City of	LGT	Saratoga, City of	SAR
Milpitas, City of	MLP	Stanford University	STU
Morgan Hill, City of	MRG	Sunnyvale, City of	SNY

Copyright (C) 2024 Santa Clara County ARES®/RACES. All rights reserved.

96

## ICS 211A Check-in List (Communications)

ICS 211A CHECK IN LIST (COMMUNICATIONS)	1. INCIDENT NAME: <i>Field Ops Type III Training</i>	2. DATE: <i>MM/DD/YYYY</i>	3. INCIDENT NUMBER: <i>TC-24-02T</i>	4. CHECK IN LOCATION <i>&lt;location&gt;</i>																																												
<b>5. INFORMATION</b>																																																
PERSONNEL NAME	CALL SIGN	AGENCY	TIME IN	TIME OUT																																												
<i>&lt;your name&gt;</i>	<i>&lt;your call&gt;</i>	<i>&lt;your org&gt;</i>	<i>08:30</i>																																													
<table border="1"> <tbody> <tr><td>American Red Cross</td><td>ARC</td><td>Mountain View, City of</td><td>MTV</td></tr> <tr><td>Campbell, City of</td><td>CBL</td><td>NASA/Ames</td><td>NAM</td></tr> <tr><td>Cupertino, City of</td><td>CUP</td><td>Palo Alto, City of</td><td>PAF</td></tr> <tr><td>Gilroy, City of</td><td>GIL</td><td>San Jose, City of</td><td>SJC</td></tr> <tr><td>Hospitals (all SCCo) &amp; PHDOC</td><td>HOS</td><td>San Jose Water Co</td><td>SJW</td></tr> <tr><td>Loma Prieta Region (Santa Cruz Mtns.)</td><td>LMP</td><td>Santa Clara, City of</td><td>SNC</td></tr> <tr><td>Los Altos, City of</td><td>LOS</td><td>Santa Clara County</td><td>XSC</td></tr> <tr><td>Los Altos Hills, Town of</td><td>LAH</td><td>Santa Clara Valley Water District</td><td>VWD</td></tr> <tr><td>Los Gatos, Town of / Monte Sereno, City of</td><td>LGT</td><td>Saratoga, City of</td><td>SAR</td></tr> <tr><td>Milpitas, City of</td><td>MLP</td><td>Stanford University</td><td>STU</td></tr> <tr><td>Morgan Hill, City of</td><td>MRG</td><td>Sunnyvale, City of</td><td>SNY</td></tr> </tbody> </table>					American Red Cross	ARC	Mountain View, City of	MTV	Campbell, City of	CBL	NASA/Ames	NAM	Cupertino, City of	CUP	Palo Alto, City of	PAF	Gilroy, City of	GIL	San Jose, City of	SJC	Hospitals (all SCCo) & PHDOC	HOS	San Jose Water Co	SJW	Loma Prieta Region (Santa Cruz Mtns.)	LMP	Santa Clara, City of	SNC	Los Altos, City of	LOS	Santa Clara County	XSC	Los Altos Hills, Town of	LAH	Santa Clara Valley Water District	VWD	Los Gatos, Town of / Monte Sereno, City of	LGT	Saratoga, City of	SAR	Milpitas, City of	MLP	Stanford University	STU	Morgan Hill, City of	MRG	Sunnyvale, City of	SNY
American Red Cross	ARC	Mountain View, City of	MTV																																													
Campbell, City of	CBL	NASA/Ames	NAM																																													
Cupertino, City of	CUP	Palo Alto, City of	PAF																																													
Gilroy, City of	GIL	San Jose, City of	SJC																																													
Hospitals (all SCCo) & PHDOC	HOS	San Jose Water Co	SJW																																													
Loma Prieta Region (Santa Cruz Mtns.)	LMP	Santa Clara, City of	SNC																																													
Los Altos, City of	LOS	Santa Clara County	XSC																																													
Los Altos Hills, Town of	LAH	Santa Clara Valley Water District	VWD																																													
Los Gatos, Town of / Monte Sereno, City of	LGT	Saratoga, City of	SAR																																													
Milpitas, City of	MLP	Stanford University	STU																																													
Morgan Hill, City of	MRG	Sunnyvale, City of	SNY																																													
ICS 211A SCCo RACES	6. NUMBER OF PAGES: _____ of _____	7. PREPARED BY (RESOURCE UNIT):	8. MISSION NUMBER <b>X00 -</b>																																													

Copyright (C) 2024 Santa Clara County ARES®/RACES. All rights reserved.

97

## Be On Time!

- Notice that the assignment is for 09:00 to 12:00
- Yet, you have arrived at Staging at 08:30. Excellent!
- Take into account all activities that must be completed prior to the start of your assignment
  - Checking in and out of nets takes time
  - Unexpected traffic can cause delays
  - Finding a parking place takes time
  - Going through staging takes time
  - Programming your radio takes time
  - Getting to your assignment takes time
  - Setting up your station, takes time
- Be sure to work backwards from when you need to be on the air and plan your travel, arrival accordingly
  - For most activities arrive at staging no later than 30 minutes before your shift

Copyright (C) 2024 Santa Clara County ARES®/RACES. All rights reserved.

98

## Staging: Paperwork



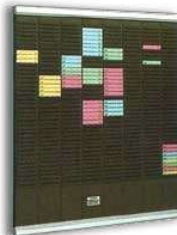
- Staging personnel will usually have some paperwork for you to fill out
  - T-card
  - DSW registration, if needed
  - Safety forms, releases, ...
- Be prepared with clip board, pen, flashlight (if dark)
  - Table space may be limited (or non-existent)
- Write neatly

Copyright (C) 2024 Santa Clara County ARES®/RACES. All rights reserved.

99

## T-Cards

- Cards
  - T-shaped cards slip into slots in rack without falling through
  - First line visible in rack
  - May be plain, lined or pre-printed with specific fields
  
- Racks
  - Organizes cards for easy viewing
  - May be mounted on wall or flexible canvas for deployment
  - Can be constructed out of CD visor holders



Copyright (C) 2024 Santa Clara County ARES®/RACES. All rights reserved.

100

## T-Cards – Typical Information

- Name (Last, First)
- Agency Code
- Call sign
- Credentials (only list highest)
- Other information as requested
  - Home city (*Agency Code*)
  - Cell Phone
  - Additional info based on event needs
- Staging will define the specific information and required format
- Complete a T-Card with your information
- Staging will keep track of your assignment

### EXAMPLE

<i><b>Munster, Herman</b></i>	<i><b>W6XRL4</b></i>
<i><b>XXX (Agency Code)</b></i>	
<i><b>F3, N3, P2, S3, MAC</b></i>	
<i><b>or</b></i>	
<i><b>C4, MAC</b></i>	
<i><b>09:00 Assigned to Field Ops III</b></i>	
<small>BW-566</small>	

Copyright (C) 2024 Santa Clara County ARES®/RACES. All rights reserved.

101

## Staging: Review Information



- You will likely be given other information while at staging as part of a briefing
  - Event/Incident overview information
  - Maps, procedures, safety info, ...
  - ICS-205 Communications Plan
- Familiarize yourself with the information
- Use the ICS-205 to program your radio

## Example ICS-205 Communications Plan

COMMUNICATIONS PLAN SCCo ARES/RACES/ACS		1. Incident Name/Location Boris Karloff Memorial Mummy Race / Mockingbird Heights Stage		2. Activation Number MHT-15-05				3. Operational Period Date/Time From Date: 10/31/2018 To Date: 10/31/2018 From Time: 18:00 To Time: 24:00		
4. Communications Resources										
Ch #	Function	Call Sign and/or Sys / Net / Ch / TG Name	Assignment	Rx Freq N / W	Rx Tone or NAC	Tx Freq N / W or + / - / S	Tx Tone or NAC	Mode A/D/M	Remarks	
1	Resource	K9ABC3R Resource Net-West	Mutual Aid Activation & Tracking	146.115 W	N/A	+	100.0	A	Use when approaching from the west.	
2	Resource	N6XYZ0R Resource Net-East	Mutual Aid Activation & Tracking	440.800 W	127.3	430.800 W	114.8	A	Use when approaching from the east.	
3	Command	W6WKG9R Command Net	Event Staff	442.500 W	100.0	+	100.0	A	Open net. All event staff should monitor.	
4	Command	KZ6MHT1R Command Net - Alt	Event Staff	146.640 W	N/A	-	162.2	A	Backup.	
5	Staging	Staging Net	Unassigned Communicators	147.420 W	N/A	S	N/A	A	Contact Staging upon arrival and when traveling between assignments.	
6	Operations	KZ6MHT1R Race Net	Checkpoints and Rovers	146.640 W	N/A	-	162.2	A	All communicators must be in contact with net control when performing their assigned duties.	
7	Operations	W6WKG9R Race Net -Alt	Checkpoints and Rovers	442.500 W	100.0	+	100.0	A	Backup.	
8	Operations	MHT ECC	Command Post	3.878 LSB	N/A	S	N/A	A	HF 75m NVIS with Mockingbird Heights ECC	
9	Operations	W1MHT-1	Packet BBS Access	145.750 W	N/A	S	N/A	D	1200 baud.	
10	Emergency	9-1-1	Police/Fire/Medical Requests	N/A	N/A	N/A	N/A	-	Call 9 1 1 to request first responder assistance, THEN notify net control.	
5. Special Instructions Resource Net repeaters will be linked. All nets are Directed Nets unless otherwise indicated.										
ICS 205 SCCo RACES		6. Prepared by (Communications Unit Leader) Herman Munster, W6XRL4				7. Prepared Date/Time 06/02/2018 09:30		8. Page 1 of 1		
See reverse for instructions. All channels are shown as if programmed in a base station, mobile or portable radio. Repeater stations must be programmed with the Rx and Tx reversed.										

ICS 205-SCCo ARES/RACES/ACS (rev. 2018-Jul-04)

## Personal Radio Programming

- You must be able to program your radio to whatever is listed in the ICS-205 Communications Plan
  - Simplex: Frequency, Tone/Tone-squelch, disable offset
  - Duplex (repeaters): Frequency, Offset, Tone/Tone-squelch
- Make sure you can also turn off other, inappropriate, unnecessary and troublesome features
  - Battery saver, VOX, Yaesu Wires, ...
- Programming manually, on the fly, via the keypad, without hesitation, is the only viable option for real assignments
  - Programming via computer and software is NOT practical in the field
- Take personal responsibility for mastering the operation of your own radio BEFORE you arrive

Copyright (C) 2024 Santa Clara County ARES®/RACES. All rights reserved.

104

## Staging: Wait Time



- While in staging, monitor the staging net at all times
- Use the time to:
  - Program your radio and verify its operation
  - Familiarize yourself with the information provided
- At some point, you will receive a local, specific assignment
  - The assignment may include a tactical call sign to use
  - Alternatively, net control may assign the tactical call sign
  - Again, if you don't feel safe or ready, you can refuse
- Proceed to local assignment when/as instructed

Copyright (C) 2024 Santa Clara County ARES®/RACES. All rights reserved.

105





## Review: FCC Call Signs vs. Tactical Call Signs

- FCC is your legal call sign
  - FCC Part 97 requires you to identify yourself with your FCC call sign every 10 minutes (during an extended conversation) and at the end of your communication
  - In EmComm, we also use the FCC call sign at the end of our conversation as a signal that we are finished speaking
- Tactical Call Signs represent a function or location
  - Example: shelter 1, checkpoint 5, rover 3, fire station 2, rover 9, ...
  - They are used when we want to communicate with that function or location, regardless of who the individual happens to be
  - If assigned a tactical call sign, use it like you normally would use a call sign, but end your communication with your FCC call sign

Copyright (C) 2024 Santa Clara County ARES®/RACES. All rights reserved.

106

## Example: FCC vs. Tactical Call Signs

- Example: Using FCC Call Signs 
  - Call and answer using FCC call sign
  - End with FCC call sign
- Example: Using Tactical Call Signs 
  - Call and answer using tactical call sign
  - End with FCC call sign
- In both cases, FCC call sign at the end satisfies FCC rules and signals the other person that your communication is finished

Copyright (C) 2024 Santa Clara County ARES®/RACES. All rights reserved.

107

## Exercise: Local Assignment

- Assume the time is now 08:50
- Staging gives you the following assignment
  - Your assignment is to participate as a student in the classroom
  - Set up your station and check into the student net on 147.525 MHz
  - Your tactical call sign will be “Student <number>”
    - Where <number> is the number you received at the beginning of class
  - Pay attention at all times
  - Volunteer answers to all questions
  - Participate enthusiastically in all exercises
- Update your ICS-214

## Example: Updated ICS-214

<b>UNIT LOG</b> ICS 214-SCCo ARES/RACES	<b>1. Incident Name and Activation Number</b>		<b>2. Operational Period (Date/Time)</b>	
	<i>Field Ops Type III Training Class</i> TC-25-01T		<i>MM/DD/YYYY MM/DD/YYYY</i> From: 09:00 To: 12:00	
<b>3. Unit Name / Tactical Call / Designators</b>			<b>4. Unit Leader (Name, Call Sign, ICS Position)</b>	
<i>Student &lt;your number&gt;</i>			<i>&lt;your name&gt;, &lt;your call sign&gt;</i>	
<b>5. Personnel Roster Assigned</b>				
Name		Call Sign	ICS Position	Home Base/City
<b>6. ACTIVITY LOG</b>				
Time (24:00)	Major Activities & Events / Occasional Messages (indicate From / To / Msg# / Msg Text)			
08:00	<i>Assignment: attend Field Ops Type III Training Class at &lt;location&gt;</i>			
08:05	<i>Departed home, odometer 123</i>			
08:25	<i>Arrive staging, odometer 134</i>			
08:50	<i>Assignment: participate as student, tactical call sign "student &lt;your number&gt;"</i>			

## Orient Yourself to the Assignment Location

- Who we support
  - Government agencies
    - Santa Clara County (Office of Emergency Management, County Fire, ...), city agencies, water districts, ...
  - Non-government organizations (“NGO’s”)
    - Hospitals, Red Cross, Salvation Army, CERT, community-and faith-based organizations, general public
- Find out who you should report to
  - Introduce yourself; clarify expectations (in both directions)
  - Verify information/message workflow
- Get a briefing or else find out for yourself
  - Food, water, restroom, telephone, copy machine, comms reqs, ...
  - Determine the best location for your gear
- Set up your station

Copyright (C) 2024 Santa Clara County ARES®/RACES. All rights reserved.

110

## Assignment Is Not Well Defined?

- If relieving someone, ask for a relief briefing
- Ask your Supervisor and/or Net Control for any clarification
- Discuss with the person in charge at the served agency
  - Query them if they are not sure what you can provide
  - What are their communication needs
  - Who might they need/expect to communicate with
  - What type of information or forms will they need sent or received
  - Inform them of the services you can provide and be clear on what you cannot provide
  - What key information/status are they interested in receiving

Copyright (C) 2024 Santa Clara County ARES®/RACES. All rights reserved.

111

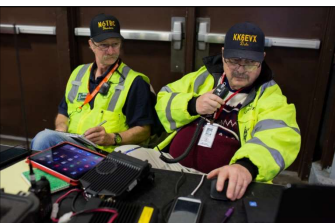




## Setting Up A Field Station

Where, how, ...

15m Copyright (C) 2024 Santa Clara County ARES®/RACES. All rights reserved. 112

## You may be assigned:

<p>Fixed - Indoors</p> 	<p>Fixed - Outdoors</p> 	
<p>Mobile - Vehicle</p> 	<p>Mobile - Bicycle</p> 	<p>Pedestrian</p> 

Copyright (C) 2024 Santa Clara County ARES®/RACES. All rights reserved. 113

## Select an Appropriate Operating Location

- Convenient
  - For the agency
    - Near their command/management staff (where message traffic is)
    - Consider vehicles, pedestrians, access & functional needs, unique facility reqs
  - For you
    - Access to food, water, restrooms, ...
    - Near antenna feedline (or a window where you can run cable outside)
- Quiet (however much is possible)
  - For the agency
    - Your talking on the mic shouldn't interrupt their activities
  - For you
    - Background noise can hinder the ability of others to hear you, or you to hear them
- Comfortable
  - Standing next to a jack on the wall won't work for an 8-hour shift
  - Consider table, chair, pop-up shelter, lighting, weather, extra coax, ...

Copyright (C) 2024 Santa Clara County ARES®/RACES. All rights reserved.

114

## Organize the Work Space



- Sufficient room (at your table, in your vehicle, in your backpack)
  - Radio equipment (including power source)
  - Computer equipment (situation specific)
  - Forms: Currently in use ICS 205, ICS 214, ICS 309, various message forms
  - Procedures, other documentation
- Clipboards – several can be handy
  - Protect papers from blowing in the wind
  - Hand to message senders so they can write message without taking up space on your table
- Make it safe – especially at night
  - Antenna support is out of the way, can't fall on or poke someone/something
  - Mark or cover cable paths, guy wires/ropes
  - "Caution" tape, gaffer's tape, safety cones can be helpful
  - Lights, beacons or other safety devices as appropriate

Copyright (C) 2024 Santa Clara County ARES®/RACES. All rights reserved.

115

## Ensure Adequate Visibility and Presence

- Make sure people know where you are and what you do
- Deploy “Radio Communications” or other signage
  - As appropriate for the situation
  - See: SCCo ARES/RACES website > Operations > Forms and Signs
- Wear safety vest at all times – even indoors
  - Unless told to wear something else by the served agency
  - It helps people find you in a crowd



Copyright (C) 2024 Santa Clara County ARES®/RACES. All rights reserved.

116

## Bring Your Full Go Kit

- Even if you “know” you won’t need it
  - The situation is usual dynamic
  - You may be redirected to a different assignment
- Even if you’ll be using pre-installed equipment
  - Equipment failures
  - Improper installation, configuration
- Each resource type includes specific gear
  - The person requesting the typed resource knows that
  - The person dispatching a typed resource knows that
  - As a typed resource, it’s your responsibility to be properly equipped and bring with you what everyone is expecting

Copyright (C) 2024 Santa Clara County ARES®/RACES. All rights reserved.

117

## You Represent All Of Us!

- You are an ambassador to the public for SCCo ARES/RACES. How you perform reflects on all amateur radio operators.
- **Your Responsibilities before an event**
  - Learn your radio and other equipment.
  - Keep your go-kit updated (everything working, batteries charged, etc.)
  - You are responsible for staying current with SCCo documentation (frequency lists, procedures, training material, forms, etc.).
  - Verify preparation and that everything is working before arriving at your assignment.
- **Your Responsibilities during an event**
  - You need to be trained and fully prepared to perform the duties assigned.
  - Do not take an assignment unless you have the confidence that you can provide dependable and reliable communication services to a served agency in benefit to the public for real and public service events.

Copyright (C) 2024 Santa Clara County ARES®/RACES. All rights reserved.

118

## In The Second Part of this Course ...

- We will add to your ICS-211 and ICS-214. So, save them and bring them with you to the second part
- We will continue with our simulated deployment:
  - Equipment for Type III Field Comms
  - Equipment for Type II Field Comms
  - On Site Operations
  - Types of Message Traffic
  - Advanced Techniques
  - Dealing With Problems
  - Demobilization
- We will also review checklists that can be used to keep us on track

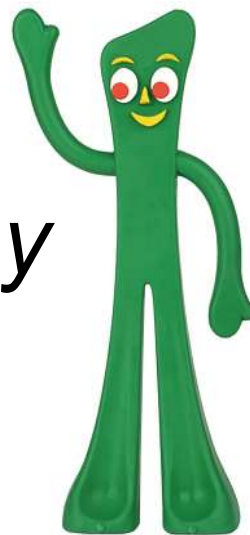
Copyright (C) 2024 Santa Clara County ARES®/RACES. All rights reserved.

119

Whatever the Problem, Remember ...

*Semper Gumby*

("Always Flexible")



Copyright (C) 2024 Santa Clara County ARES®/RACES. All rights reserved.

120

## Final Assignment

Please complete the On-Line Class Evaluation within one week.

To get course credit you need to:

- a) Attend at least 90% of the class
- b) Participate in class
- b) Complete the class evaluation

If you do these, you will get credit for the course.

Copyright (C) 2024 Santa Clara County ARES®/RACES. All rights reserved.

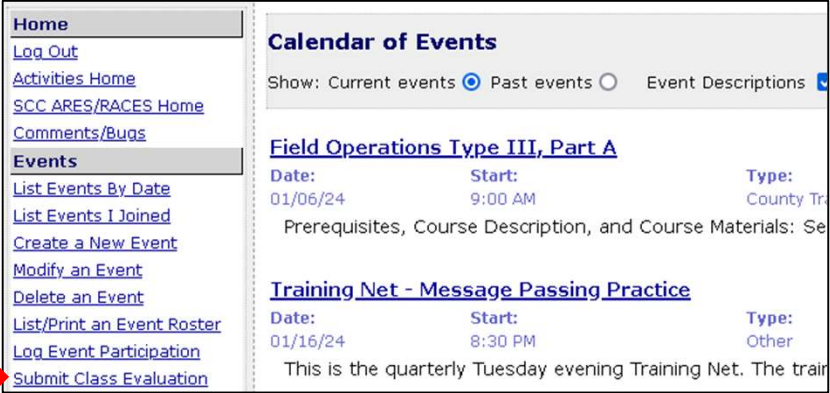
121



## Online Class Evaluation

Log into <https://www.scc-ares-races.org/activities/events.php>

Click “Submit Class Evaluation” in Events menu



The screenshot shows the website's navigation menu on the left and the 'Calendar of Events' section on the right. The 'Submit Class Evaluation' link is highlighted with a red arrow. The 'Calendar of Events' section lists two events: 'Field Operations Type III, Part A' and 'Training Net - Message Passing Practice'.

Date:	Start:	Type:
01/06/24	9:00 AM	County Tr
Prerequisites, Course Description, and Course Materials: Se		
Date:	Start:	Type:
01/16/24	8:30 PM	Other
This is the quarterly Tuesday evening Training Net. The train		

Copyright (C) 2024 Santa Clara County ARES®/RACES. All rights reserved. 122

## Thank You!

If you have questions or feedback about this or other training activities, you can join our Training discussion group.

<https://scc-ares-races.groups.io/g/training>

This is a moderated group.

Reminder:

Field Operations Type III Part B & Type II is Saturday 02/01/25

See: <https://www.scc-ares-races.org/activities/events.php>

Class presentation with homework should be posted by Monday 1/27/2025

An email will be sent to those signed up when it is posted.

Message Passing class is on Saturday 01/25/25